

**General Information**

**Urbanized Area Statistics - 2010 Census**  
194 Fargo, ND-MN  
70 Square Miles  
176,676 Population  
194 Pop. Rank out of 498 UZAs

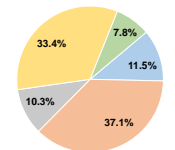
**Service Consumption**  
6,098,331 Annual Passenger Miles (PMT)  
1,679,355 Annual Unlinked Trips (UPT)  
6,166 Average Weekday Unlinked Trips  
2,161 Average Saturday Unlinked Trips  
20 Average Sunday Unlinked Trips

**Database Information**  
NTDID: 80003  
Reporter Type: Full Reporter

**Financial Information**

**Sources of Operating Funds Expended**  
Fare Revenues \$804,006 11.5%  
Local Funds \$2,597,845 37.1%  
State Funds \$722,046 10.3%  
Federal Assistance \$2,337,400 33.4%  
Other Funds \$547,111 7.8%  
**Total Operating Funds Expended \$7,008,408 100.0%**

**Operating Funding Sources**



**Service Area Statistics**

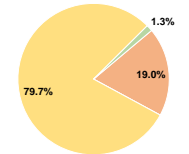
45 Square Miles  
134,149 Population

**Service Supplied**

1,274,246 Annual Vehicle Revenue Miles (VRM)  
101,486 Annual Vehicle Revenue Hours (VRH)  
36 Vehicles Operated in Maximum Service (VOMS)  
46 Vehicles Available for Maximum Service (VAMS)

**Sources of Capital Funds Expended**  
Fare Revenues \$0 0.0%  
Local Funds \$337,113 19.0%  
State Funds \$0 0.0%  
Federal Assistance \$1,414,076 79.7%  
Other Funds \$23,854 1.3%  
**Total Capital Funds Expended \$1,775,043 100.0%**

**Capital Funding Sources**



**Modal Characteristics**

Mode	Vehicles Operated in Maximum Service		Uses of Capital Funds				Total
	Directly Operated	Purchased Transportation	Revenue Vehicles	Systems and Guideways	Facilities and Stations	Other	
Bus	-	23	\$1,290,317	\$0	\$0	\$24,419	\$1,314,736
Demand Response	-	13 <sup>2</sup>	\$445,320	\$14,987	\$0	\$0	\$460,307
<b>Total</b>	-	<b>36</b>	<b>\$1,735,637</b>	<b>\$14,987</b>	<b>\$0</b>	<b>\$24,419</b>	<b>\$1,775,043</b>

**Summary of Operating Expenses (OE)**

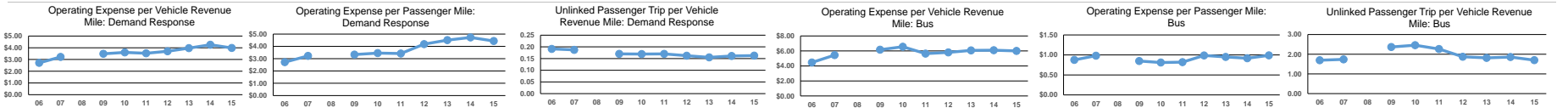
Salary, Wages, Benefits \$2,175,964 31.0%  
Materials and Supplies \$1,326,203 18.9%  
Purchased Transportation \$3,034,102 43.3%  
Other Operating Expenses \$472,139 6.7%  
**Total Operating Expenses \$7,008,408 100.0%**  
Reconciling OE Cash Expenditures  
Purchased Transportation (Reported Separately)

**Operation Characteristics**

Mode	Operating Expenses	Fare Revenues	Uses of Capital Funds	Annual Passenger Miles	Annual Unlinked Trips	Annual Vehicle Revenue Miles	Annual Vehicle Revenue Hours	Fixed Guideway Directional Route Miles	Vehicles Available for Maximum Service	Vehicles Operated in Maximum Service	Percent Spare Vehicles	Average Fleet Age in Years <sup>1</sup>
Bus	\$5,748,174	\$651,648	\$1,314,736	5,814,310	1,627,916	957,777	77,767	0.0	32	23	28.1%	8.1
Demand Response	\$1,260,234 <sup>2</sup>	\$152,358 <sup>2</sup>	\$460,307	284,021	51,439	316,469	23,719	0.0	14	13 <sup>2</sup>	7.1%	4.0
<b>Total</b>	<b>\$7,008,408</b>	<b>\$804,006</b>	<b>\$1,775,043</b>	<b>6,098,331</b>	<b>1,679,355</b>	<b>1,274,246</b>	<b>101,486</b>	<b>0.0</b>	<b>46</b>	<b>36</b>	<b>21.7%</b>	

**Performance Measures**

Mode	Service Efficiency		Service Effectiveness		
	Operating Expenses per Vehicle Revenue Mile	Operating Expenses per Vehicle Revenue Hour	Operating Expenses per Passenger Mile	Operating Expenses per Unlinked Passenger Trip	Unlinked Trips per Vehicle Revenue Mile
Bus	\$6.00	\$73.92	\$0.99	\$3.53	1.7
Demand Response	\$3.98	\$53.13	\$4.44	\$24.50	0.2
<b>Total</b>	<b>\$5.50</b>	<b>\$69.06</b>	<b>\$1.15</b>	<b>\$4.17</b>	<b>1.3</b>



**Notes:**  
<sup>1</sup>Demand Response - Taxi (DT) and non-dedicated fleets do not report fleet age data.  
<sup>2</sup>Includes data for a contract with another reporter.  
<sup>\*</sup>This agency has a purchased transportation relationship in which they sell service to City of Moorhead, DBA: Metropolitan Area Transit (NTDID: 50026), and in which the data are captured in this report for mode DR/PT.