

**General Information**

**Urbanized Area Statistics - 2010 Census**

102 Stockton, CA  
 93 Square Miles  
 370,583 Population  
 102 Pop. Rank out of 498 UZAs

**Other UZAs Served**

0 California Non-UZA; 345 Manteca, CA; 334 Tracy, CA; 403 Lodi, CA

**Service Consumption**

23,885,347 Annual Passenger Miles (PMT)  
 4,402,965 Annual Unlinked Trips (UPT)  
 15,573 Average Weekday Unlinked Trips<sup>a</sup>  
 4,277 Average Saturday Unlinked Trips<sup>a</sup>  
 3,342 Average Sunday Unlinked Trips<sup>a</sup>

**Database Information**

NTDID: 90012  
 Reporter Type: Full Reporter

**Service Area Statistics**

1,426 Square Miles  
 735,364 Population

**Service Supplied**

2,979,123 Annual Vehicle Revenue Miles (VRM)  
 193,959 Annual Vehicle Revenue Hours (VRH)  
 102 Vehicles Operated in Maximum Service (VOMS)  
 138 Vehicles Available for Maximum Service (VAMS)

**Modal Characteristics**

**Modal Overview**

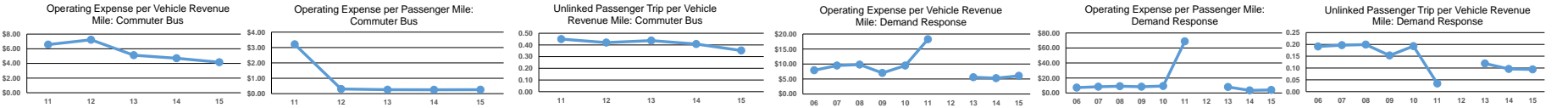
Mode	Vehicles Operated in Maximum Service		Revenue Vehicles	Uses of Capital Funds			Total
	Directly Operated	Purchased Transportation		Systems and Guideways	Facilities and Stations	Other	
Bus	47	21	\$299,216	\$428,950	\$34,998,823	\$2,075,583	\$37,802,572
Commuter Bus	-	14	\$0	\$0	\$0	\$0	\$0
Demand Response - Taxi	-	18	\$0	\$0	\$0	\$0	\$0
Demand Response	-	2	\$0	\$0	\$0	\$0	\$0
<b>Total</b>	<b>47</b>	<b>55</b>	<b>\$299,216</b>	<b>\$428,950</b>	<b>\$34,998,823</b>	<b>\$2,075,583</b>	<b>\$37,802,572</b>

**Operation Characteristics**

Mode	Operating Expenses	Fare Revenues	Uses of Capital Funds	Annual Passenger Miles	Annual Unlinked Trips	Annual Vehicle Revenue Miles	Annual Vehicle Revenue Hours	Fixed Guideway Directional Route Miles	Vehicles Available for Maximum Service	Vehicles Operated in Maximum Service	Percent Spare Vehicles	Average Fleet Age in Years <sup>1</sup>
Bus	\$25,702,906	\$3,221,207	\$37,802,572	13,956,746	4,143,453	2,069,500	162,693	0.0	98	68	30.6%	5.8
Commuter Bus	\$2,456,373	\$1,009,114	\$0	9,567,494	207,989	590,655	16,249	0.0	18	14	22.2%	10.5
Demand Response - Taxi	\$1,972,387	\$180,309	\$0	346,649	50,605	309,218	14,650	0.0	18	18	0.0%	
Demand Response	\$59,142	\$1,073	\$0	14,458	918	9,750	367	0.0	4	2	50.0%	9.0
<b>Total</b>	<b>\$30,190,808</b>	<b>\$4,411,703</b>	<b>\$37,802,572</b>	<b>23,885,347</b>	<b>4,402,965</b>	<b>2,979,123</b>	<b>193,959</b>	<b>0.0</b>	<b>138</b>	<b>102</b>	<b>26.1%</b>	

**Performance Measures**

Mode	Service Efficiency		Service Effectiveness			
	Operating Expenses per Vehicle Revenue Mile	Operating Expenses per Vehicle Revenue Hour	Operating Expenses per Passenger Mile	Operating Expenses per Unlinked Passenger Trip	Unlinked Trips per Vehicle Revenue Mile	Unlinked Trips per Vehicle Revenue Hour
Bus	\$12.42	\$157.98	\$1.84	\$6.20	2.0	25.5
Commuter Bus	\$4.16	\$151.17	\$0.26	\$11.81	0.4	12.8
Demand Response - Taxi	\$6.38	\$134.63	\$5.69	\$38.98	0.2	3.5
Demand Response	\$6.07	\$161.15	\$4.09	\$64.42	0.1	2.5
<b>Total</b>	<b>\$10.13</b>	<b>\$155.66</b>	<b>\$1.26</b>	<b>\$6.86</b>	<b>1.5</b>	<b>22.7</b>



Notes: <sup>a</sup>Average Unlinked Trips not available for Demand Response Taxi.  
<sup>1</sup>Demand Response - Taxi (DT) and non-dedicated fleets do not report fleet age data.

**Financial Information**

**Sources of Operating Funds Expended**

Fare Revenues	\$4,411,703	14.2%
Local Funds	\$9,571,772	30.7%
State Funds	\$11,017,654	35.4%
Federal Assistance	\$5,779,342	18.6%
Other Funds	\$364,257	1.2%
<b>Total Operating Funds Expended</b>	<b>\$31,144,728</b>	<b>100.0%</b>

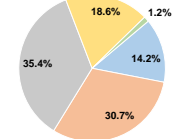
**Sources of Capital Funds Expended**

Fare Revenues	\$0	0.0%
Local Funds	\$13,669,299	36.2%
State Funds	\$9,001,491	23.8%
Federal Assistance	\$15,131,782	40.0%
Other Funds	\$0	0.0%
<b>Total Capital Funds Expended</b>	<b>\$37,802,572</b>	<b>100.0%</b>

**Summary of Operating Expenses (OE)**

Salary, Wages, Benefits	\$18,591,713	61.6%
Materials and Supplies	\$2,886,583	9.6%
Purchased Transportation	\$8,958,239	23.0%
Other Operating Expenses	\$1,754,273	5.8%
<b>Total Operating Expenses</b>	<b>\$30,190,808</b>	<b>100.0%</b>
Reconciling OE Cash Expenditures	\$953,920	
Purchased Transportation (Reported Separately)		

**Operating Funding Sources**



**Capital Funding Sources**

