

**General Information**

**Federally Recognized Tribal Statistical Areas**

315 Yavapai-Apache Nation Reservation, AZ

**Service Consumption**

972 Annual Unlinked Trips (UPT)

**Service Supplied**

63,423 Annual Vehicle Revenue Miles (VRM)  
 2,448 Annual Vehicle Revenue Hours (VRH)

**Database Information**

NTDID: 99328

Reporter Type: Tribal Reporter

**Financial Information**

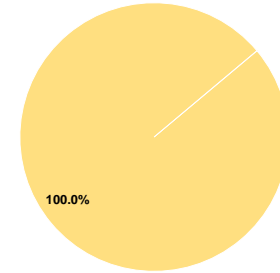
**Sources of Operating Funds Expended**

Fare Revenues	\$0	0.0%
Local Funds	\$0	0.0%
State Funds	\$0	0.0%
Federal Assistance	\$122,001	100.0%
Other Funds	\$0	0.0%
<b>Total Operating Funds Expended</b>	<b>\$122,001</b>	<b>100.0%</b>

**Sources of Capital Funds Expended**

Fare Revenues	\$0
Local Funds	\$0
State Funds	\$0
Federal Assistance	\$0
Other Funds	\$0
<b>Total Capital Funds Expended</b>	<b>\$0</b>

**Operating Funding Sources**



**Modal Characteristics**

**Operation Characteristics**

**Vehicles Operated at Maximum Service**

Mode	Directly Operated	Purchased Transportation	Operating Expenses	Fare Revenues	Uses of Capital Funds	Annual Unlinked Trips	Annual Vehicle Revenue Miles	Annual Vehicle Revenue Hours	Average Fleet Age in Years <sup>1</sup>
Bus	2	-	\$122,001	\$0	\$0	972	63,423	2,448	1.0
<b>Total</b>	<b>2</b>	<b>-</b>	<b>\$122,001</b>	<b>\$0</b>	<b>\$0</b>	<b>972</b>	<b>63,423</b>	<b>2,448</b>	

**Performance Measures**

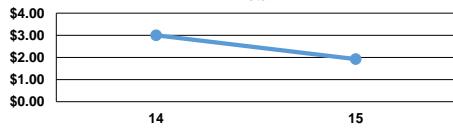
**Service Efficiency**

Mode	Operating Expenses per Vehicle Revenue Mile	Operating Expenses per Vehicle Revenue Hour
Bus	\$1.92	\$49.84
<b>Total</b>	<b>\$1.92</b>	<b>\$49.84</b>

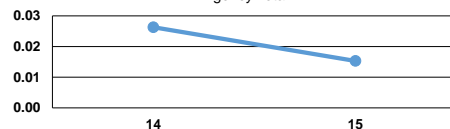
**Service Effectiveness**

Mode	Operating Expenses per Unlinked Passenger Trip	Unlinked Trips per Vehicle Revenue Mile	Unlinked Trips per Vehicle Revenue Hour
Bus	\$125.52	0.0	0.4
<b>Total</b>	<b>\$125.52</b>	<b>0.0</b>	<b>0.4</b>

Operating Expense per Vehicle Revenue Mile: Agency Total



Unlinked Passenger Trips per Vehicle Revenue Mile: Agency Total



**Notes:**

<sup>1</sup>Demand Response - Taxi (DT) and non-dedicated fleets do not report fleet age data.