

General Information

Urbanized Area (UZA) Statistics - 2010 Census

Weirton-Steubenville, WV-OH-PA
51 **Square Miles**
70,889 **Population**
389 **Pop. Rank out of 498 UZAs**

Service Area Statistics

19 **Square Miles**
19,746 **Population**

Service Consumption

50,156 **Annual Unlinked Trips (UPT)**

Service Supplied

128,014 **Annual Vehicle Revenue Miles (VRM)**
9,633 **Annual Vehicle Revenue Hours (VRH)**

Database Information

NTDID: 30066

Reporter Type: Reduced Reporter

Financial Information

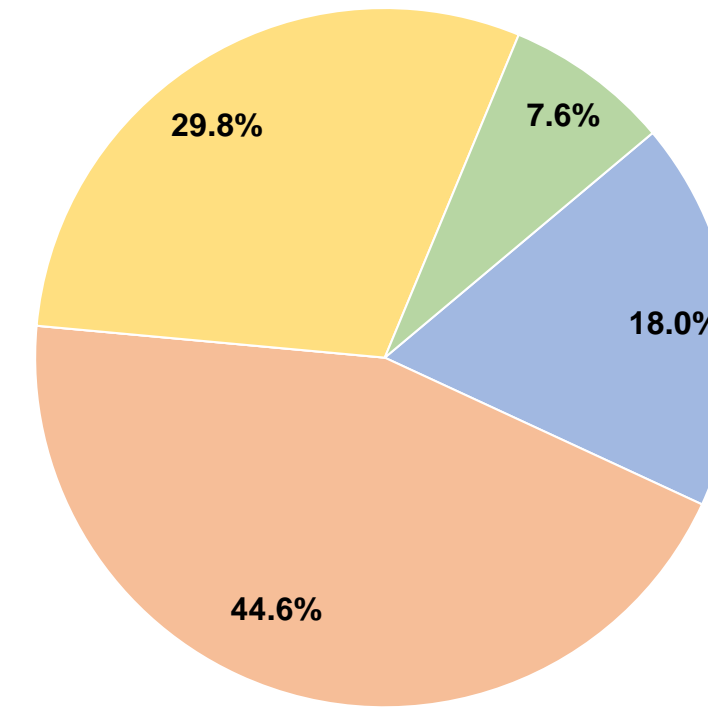
Sources of Operating Funds Expended

Fare Revenues	\$67,404	18.0%
Local Funds	\$166,797	44.6%
State Funds	\$0	0.0%
Federal Assistance	\$111,568	29.8%
Other Funds	\$28,559	7.6%
Total Operating Funds Expended	\$374,328	100.0%

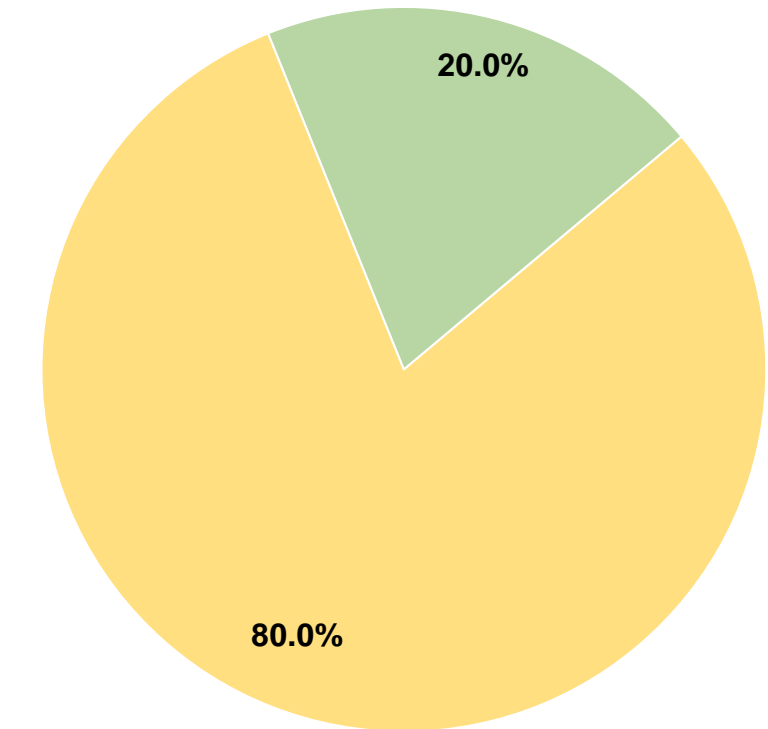
Sources of Capital Funds Expended

Fare Revenues	\$0	0.0%
Local Funds	\$0	0.0%
State Funds	\$0	0.0%
Federal Assistance	\$11,980	80.0%
Other Funds	\$2,995	20.0%
Total Capital Funds Expended	\$14,975	100.0%

Operating Funding Sources



Capital Funding Sources



Modal Characteristics

Operation Characteristics

Vehicles Operated at Maximum Service

Mode	Directly Operated	Purchased Transportation	Operating Expenses	Fare Revenues	Uses of Capital Funds	Annual Unlinked Trips	Annual Vehicle Revenue Miles	Annual Vehicle Revenue Hours	Average Fleet Age in Years ^a
Bus	4	-	\$374,328	\$67,404	\$14,975	50,156	128,014	9,633	3.9
Total	4	-	\$374,328	\$67,404	\$14,975	50,156	128,014	9,633	

Performance Measures

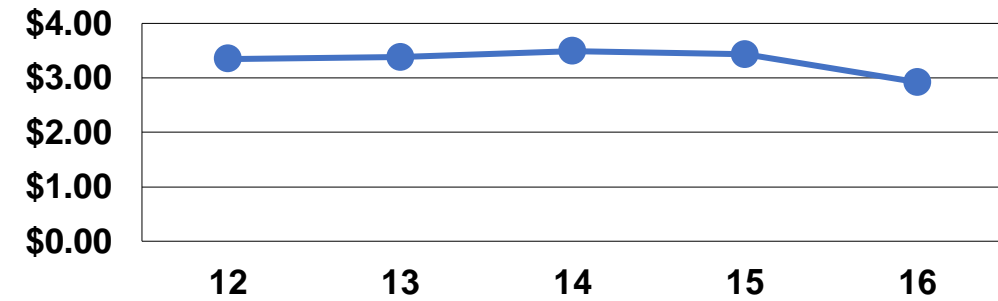
Service Efficiency

Mode	Operating Expenses per Vehicle Revenue Mile	Operating Expenses per Vehicle Revenue Hour
Bus	\$2.92	\$38.86
Total	\$2.92	\$38.86

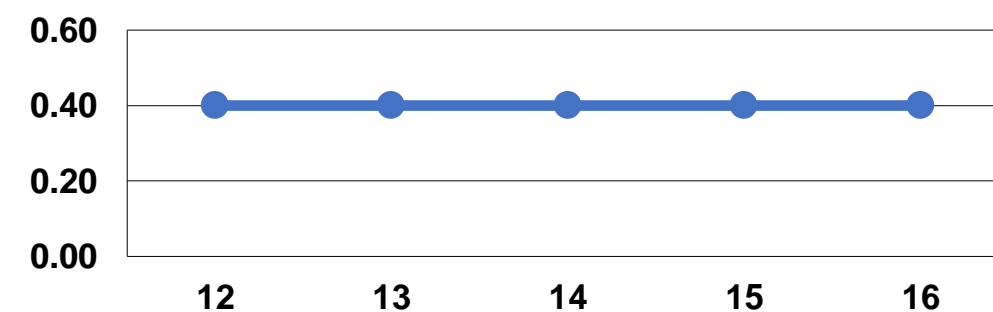
Service Effectiveness

Mode	Operating Expenses per Unlinked Passenger Trip	Unlinked Trips per Vehicle Revenue Mile	Unlinked Trips per Vehicle Revenue Hour
Bus	\$7.46	0.4	5.2
Total	\$7.46	0.4	5.2

Operating Expense per Vehicle Revenue Mile: Bus



Unlinked Passenger Trips per Vehicle Revenue Mile: Bus



Notes:

^aDemand Response - Taxi (DT) and non-dedicated fleets do not report fleet age data.