

General Information

Urbanized Area (UZA) Statistics - 2010 Census

Concord, NC
180 Square Miles
214,881 Population
167 Pop. Rank out of 498 UZAs

Other UZAs Served

0 North Carolina Non-UZA

Service Area Statistics

365 Square Miles
181,468 Population

Service Consumption

92,439 Annual Unlinked Trips (UPT)

Service Supplied

557,526 Annual Vehicle Revenue Miles (VRM)
30,802 Annual Vehicle Revenue Hours (VRH)

Database Information

NTDID: 40214

Reporter Type: Reduced Reporter

Financial Information

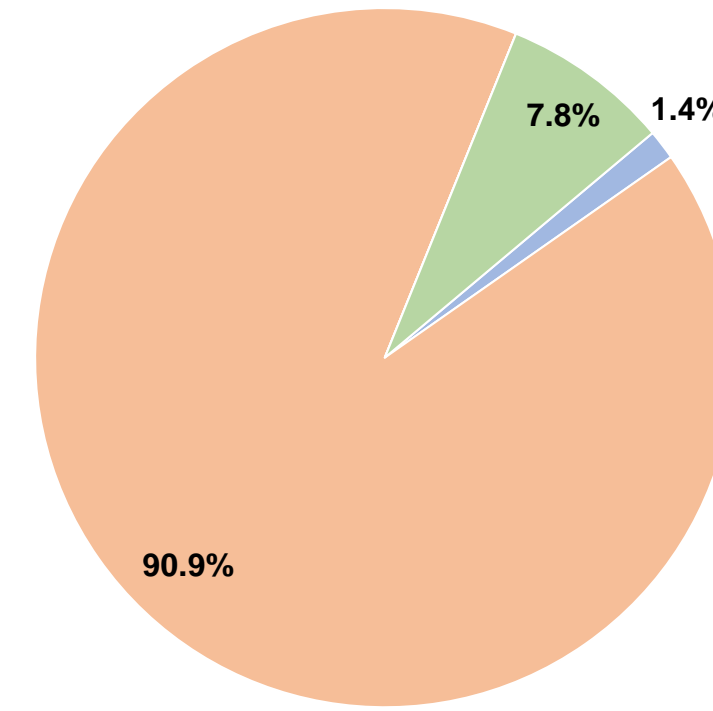
Sources of Operating Funds Expended

Fare Revenues	\$17,172	1.4%
Local Funds	\$1,127,672	90.9%
State Funds	\$0	0.0%
Federal Assistance	\$0	0.0%
Other Funds	\$96,327	7.8%
Total Operating Funds Expended	\$1,241,171	100.0%

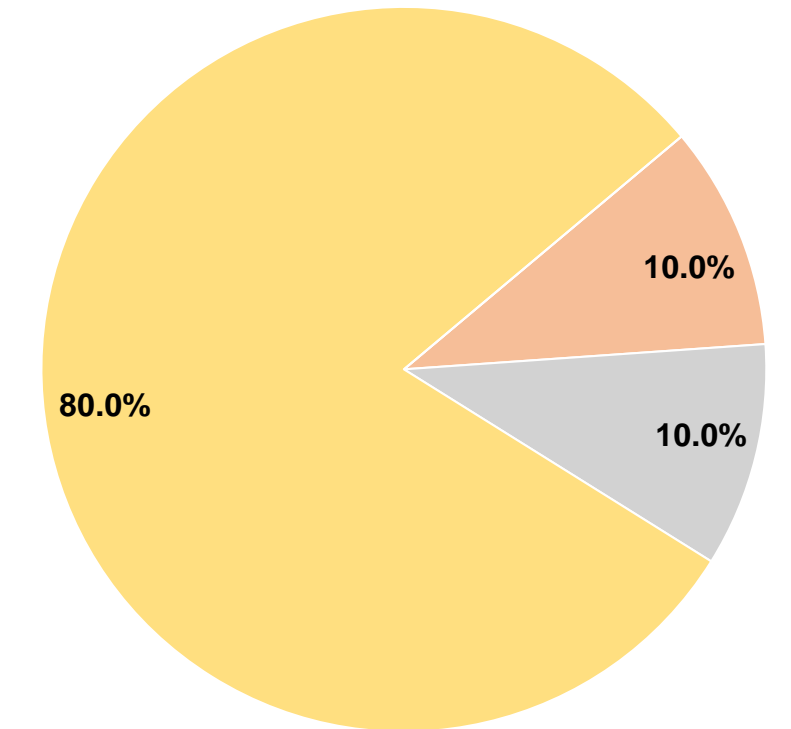
Sources of Capital Funds Expended

Fare Revenues	\$0	0.0%
Local Funds	\$28,550	10.0%
State Funds	\$28,550	10.0%
Federal Assistance	\$228,400	80.0%
Other Funds	\$0	0.0%
Total Capital Funds Expended	\$285,500	100.0%

Operating Funding Sources



Capital Funding Sources



Modal Characteristics

Operation Characteristics

Vehicles Operated at Maximum Service

Mode	Directly Operated	Purchased Transportation	Operating Expenses	Fare Revenues	Uses of Capital Funds	Annual Unlinked Trips	Annual Vehicle Revenue Miles	Annual Vehicle Revenue Hours	Average Fleet Age in Years ^a
Demand Response	27 ¹	-	\$1,241,171 ¹	\$17,172	\$285,500 ¹	92,439	557,526	30,802	4.4
Total	27	-	\$1,241,171	\$17,172	\$285,500	92,439	557,526	30,802	

Performance Measures

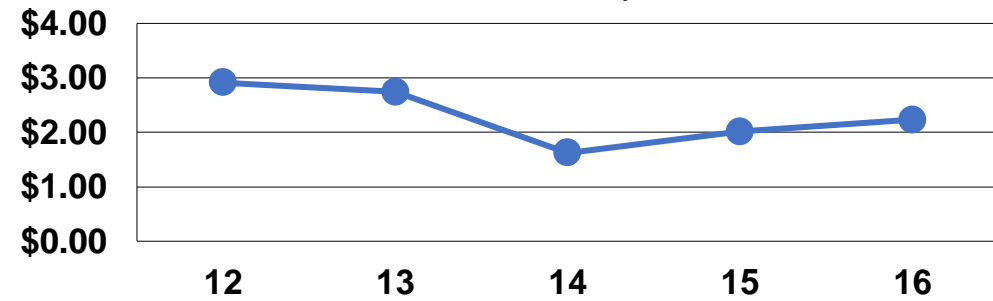
Service Efficiency

Mode	Operating Expenses per Vehicle Revenue Mile	Operating Expenses per Vehicle Revenue Hour
Demand Response	\$2.23	\$40.30
Total	\$2.23	\$40.30

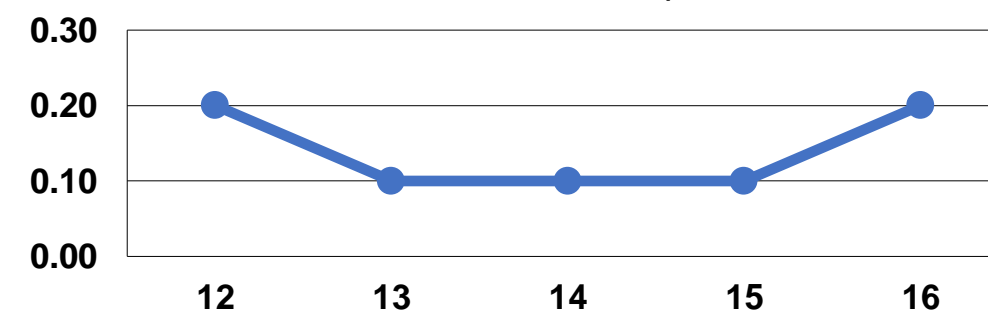
Service Effectiveness

Mode	Operating Expenses per Unlinked Passenger Trip	Unlinked Trips per Vehicle Revenue Mile	Unlinked Trips per Vehicle Revenue Hour
Demand Response	\$13.43	0.2	3.0
Total	\$13.43	0.2	3.0

Operating Expense per Vehicle Revenue Mile: Demand Response



Unlinked Passenger Trips per Vehicle Revenue Mile: Demand Response



Notes:

^aDemand Response - Taxi (DT) and non-dedicated fleets do not report fleet age data.

¹Includes data for a contract with another reporter.

*This agency has a purchased transportation relationship in which they sell service to Concord Kannapolis Area Transit (NTDID: 40167), and in which the data are captured in this report for mode DR/DO.