

Muscogee (Creek) Nation

2016 Annual Agency Profile

General Information

Federally Recognized Tribal Statistical Areas

Creek OTSA, OK; Creek/Seminole joint-use OTSA, OK

Service Consumption

65,808 Annual Unlinked Trips (UPT)

Service Supplied

440,528 Annual Vehicle Revenue Miles (VRM)

22,721 Annual Vehicle Revenue Hours (VRH)

Database Information

NTDID: 66170

Reporter Type: Tribal Reporter

Financial Information

Sources of Operating Funds Expended

Fare Revenues	\$0	0.0%
Local Funds	\$38,659	2.1%
State Funds	\$0	0.0%
Federal Assistance	\$1,783,950	97.1%
Other Funds	\$14,222	0.8%

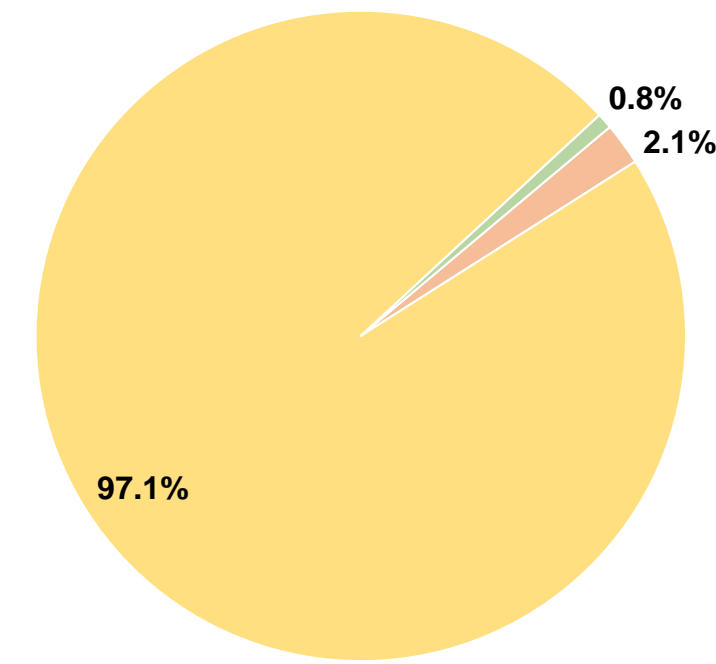
Total Operating Funds Expended \$1,836,831 100.0%

Sources of Capital Funds Expended

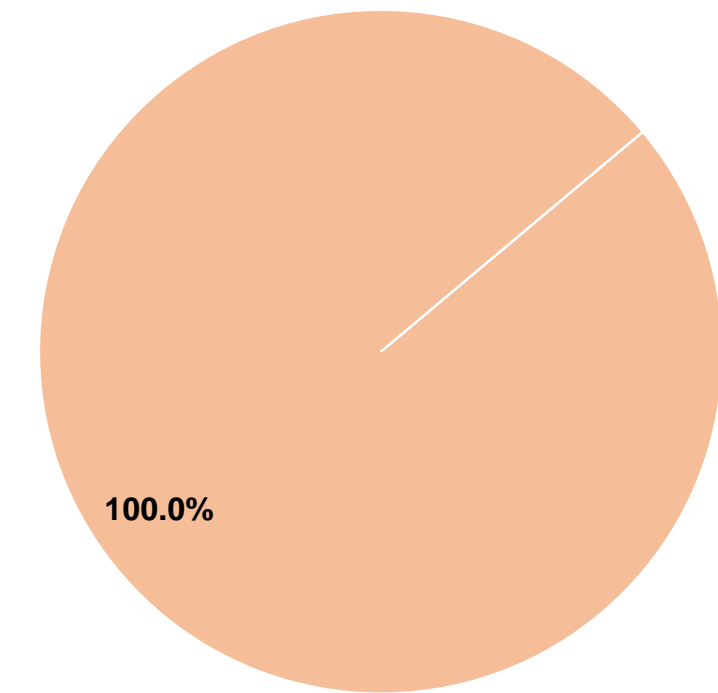
Fare Revenues	\$0	0.0%
Local Funds	\$120,432	100.0%
State Funds	\$0	0.0%
Federal Assistance	\$0	0.0%
Other Funds	\$0	0.0%

Total Capital Funds Expended \$120,432 100.0%

Operating Funding Sources



Capital Funding Sources



Modal Characteristics

Operation Characteristics

Vehicles Operated at Maximum Service

Mode	Directly Operated	Purchased Transportation	Operating Expenses	Fare Revenues	Uses of Capital Funds	Annual Unlinked Trips	Annual Vehicle Revenue Miles	Annual Vehicle Revenue Hours	Average Fleet Age in Years ^a
Demand Response	25	-	\$1,324,427	\$0	\$120,432	58,241	411,888	21,131	4.1
Bus	1	-	\$72,937	\$0	\$0	7,567	28,640	1,590	3.0
Total	26	-	\$1,397,364	\$0	\$120,432	65,808	440,528	22,721	

Performance Measures

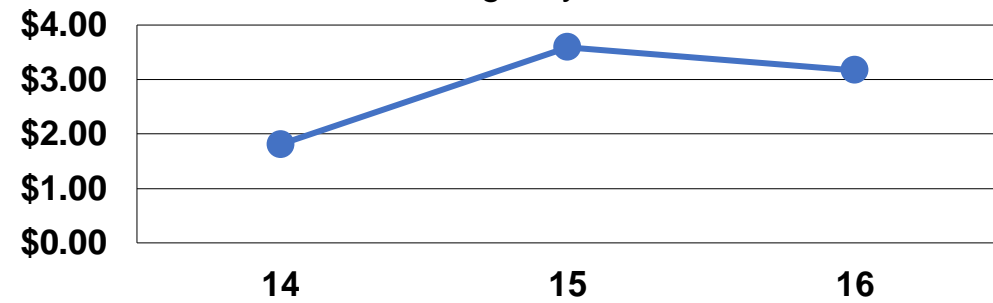
Service Efficiency

Mode	Operating Expenses per Vehicle Revenue Mile	Operating Expenses per Vehicle Revenue Hour
Demand Response	\$3.22	\$62.68
Bus	\$2.55	\$45.87
Total	\$3.17	\$61.50

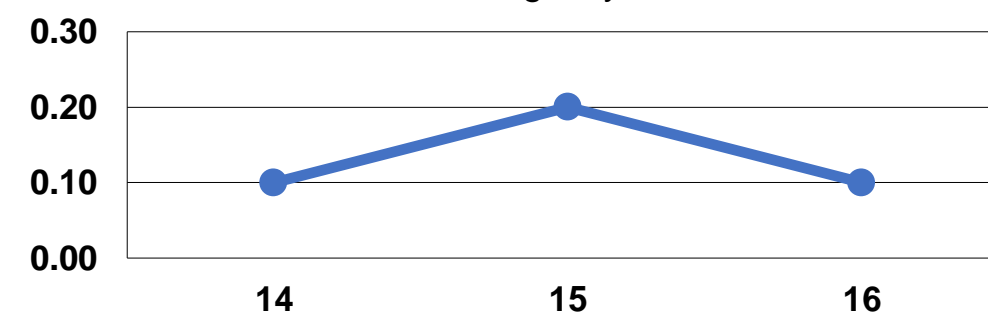
Service Effectiveness

Mode	Operating Expenses per Unlinked Passenger Trip	Unlinked Trips per Vehicle Revenue Mile	Unlinked Trips per Vehicle Revenue Hour
Demand Response	\$22.74	0.1	2.8
Bus	\$9.64	0.3	4.8
Total	\$21.23	0.1	2.9

Operating Expense per Vehicle Revenue Mile: Agency Total



Unlinked Passenger Trips per Vehicle Revenue Mile: Agency Total



Notes:

^aDemand Response - Taxi (DT) and non-dedicated fleets do not report fleet age data.