

General Information

Urbanized Area (UZA) Statistics - 2010 Census

Santa Barbara, CA
56 Square Miles
195,861 Population
184 Pop. Rank out of 498 UZAs

Service Area Statistics

54 Square Miles
178,200 Population

Service Consumption

71,285 Annual Unlinked Trips (UPT)

Service Supplied

662,239 Annual Vehicle Revenue Miles (VRM)
35,475 Annual Vehicle Revenue Hours (VRH)

Database Information

NTDID: 90243

Reporter Type: Reduced Reporter

Financial Information

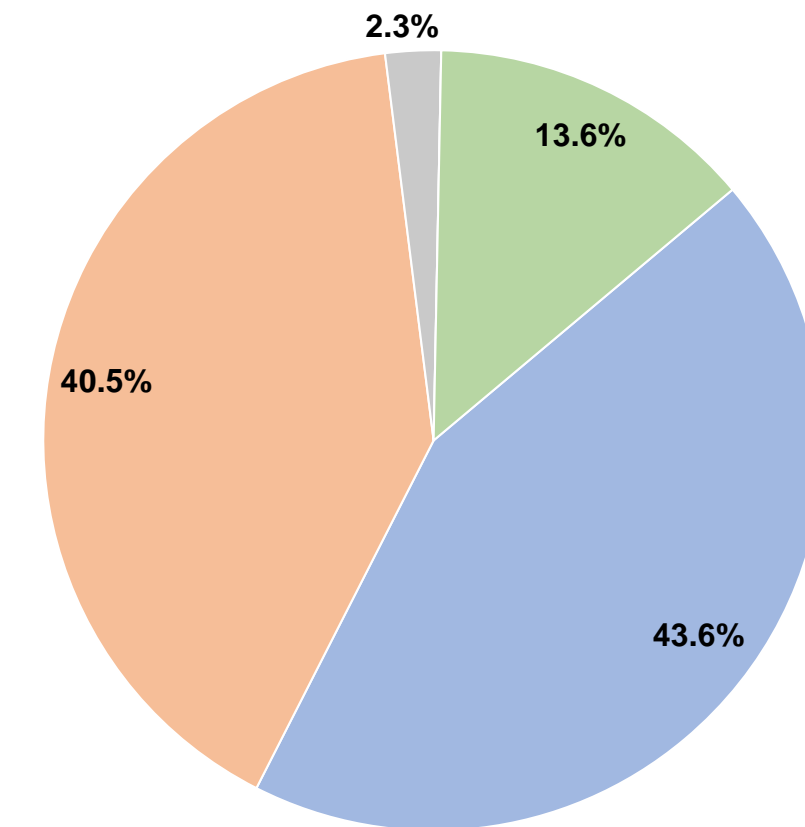
Sources of Operating Funds Expended

Fare Revenues	\$999,598	43.6%
Local Funds	\$928,493	40.5%
State Funds	\$52,789	2.3%
Federal Assistance	\$0	0.0%
Other Funds	\$311,172	13.6%
Total Operating Funds Expended	\$2,292,052	100.0%

Sources of Capital Funds Expended

Fare Revenues	\$0
Local Funds	\$0
State Funds	\$0
Federal Assistance	\$0
Other Funds	\$0
Total Capital Funds Expended	\$0

Operating Funding Sources



Modal Characteristics

Operation Characteristics

Vehicles Operated at Maximum Service

Mode	Directly Operated	Purchased Transportation	Operating Expenses	Fare Revenues	Uses of Capital Funds	Annual Unlinked Trips	Annual Vehicle Revenue Miles	Annual Vehicle Revenue Hours	Average Fleet Age in Years ^a
Demand Response	25	-	\$2,292,052	\$999,598	\$0	71,285	662,239	35,475	3.7
Total	25	-	\$2,292,052	\$999,598	\$0	71,285	662,239	35,475	

Performance Measures

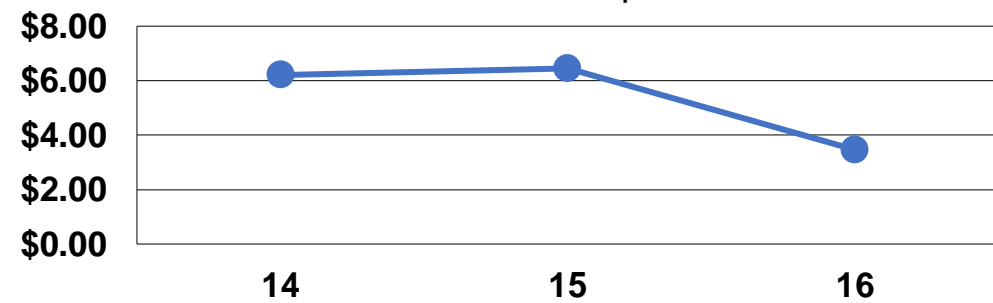
Service Efficiency

Mode	Operating Expenses per Vehicle Revenue Mile	Operating Expenses per Vehicle Revenue Hour
Demand Response	\$3.46	\$64.61
Total	\$3.46	\$64.61

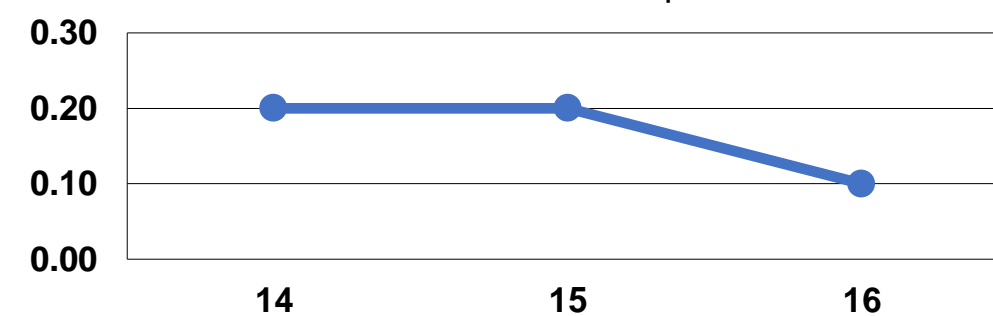
Service Effectiveness

Mode	Operating Expenses per Unlinked Passenger Trip	Unlinked Trips per Vehicle Revenue Mile	Unlinked Trips per Vehicle Revenue Hour
Demand Response	\$32.15	0.1	2.0
Total	\$32.15	0.1	2.0

Operating Expense per Vehicle Revenue Mile: Demand Response



Unlinked Passenger Trips per Vehicle Revenue Mile: Demand Response



Notes:

^aDemand Response - Taxi (DT) and non-dedicated fleets do not report fleet age data.