

# Shoshone-Bannock Tribes

2017 Annual Agency Profile

## General Information

**Federally Recognized Tribal Statistical Areas**  
Fort Hall Reservation and Off-Reservation Trust Land, ID

**Service Consumption**  
26,623 Annual Unlinked Trips (UPT)

**Service Supplied**  
140,456 Annual Vehicle Revenue Miles (VRM)  
11,700 Annual Vehicle Revenue Hours (VRH)

**Database Information**  
NTDID: 00031  
Reporter Type: Tribal Reporter

## Financial Information

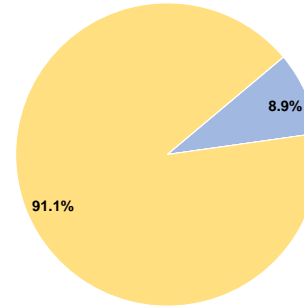
### Sources of Operating Funds Expended

Fare Revenues	\$26,623	8.9%
Local Funds	\$0	0.0%
State Funds	\$0	0.0%
Federal Assistance	\$273,163	91.1%
Other Funds	\$0	0.0%
<b>Total Operating Funds Expended</b>	<b>\$299,786</b>	<b>100.0%</b>

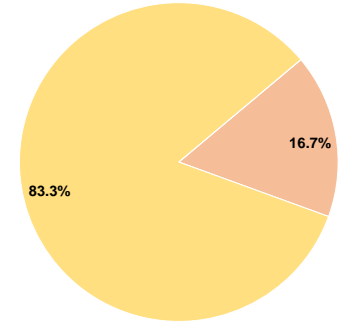
### Sources of Capital Funds Expended

Fare Revenues	\$0	0.0%
Local Funds	\$14,938	16.7%
State Funds	\$0	0.0%
Federal Assistance	\$74,690	83.3%
Other Funds	\$0	0.0%
<b>Total Capital Funds Expended</b>	<b>\$89,628</b>	<b>100.0%</b>

### Operating Funding Sources



### Capital Funding Sources



## Modal Characteristics

### Operation Characteristics

#### Vehicles Operated at Maximum Service

Mode	Directly Operated	Purchased Transportation	Operating Expenses	Fare Revenues	Uses of Capital Funds	Annual Unlinked Trips	Annual Vehicle Revenue Miles	Annual Vehicle Revenue Hours	Average Fleet Age in Years <sup>a</sup>
Bus	12	-	\$299,786	\$26,623	\$89,628	26,623	140,456	11,700	15.3
<b>Total</b>	<b>12</b>	<b>-</b>	<b>\$299,786</b>	<b>\$26,623</b>	<b>\$89,628</b>	<b>26,623</b>	<b>140,456</b>	<b>11,700</b>	

### Performance Measures

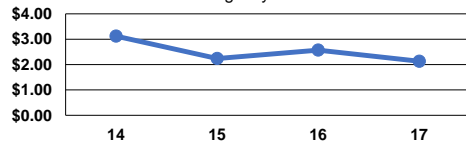
#### Service Efficiency

Mode	Operating Expenses per Vehicle Revenue Mile	Operating Expenses per Vehicle Revenue Hour
Bus	\$2.13	\$25.62
<b>Total</b>	<b>\$2.13</b>	<b>\$25.62</b>

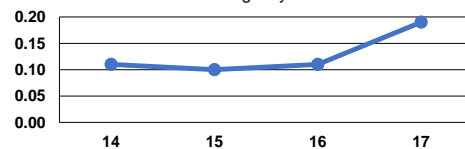
#### Service Effectiveness

Mode	Operating Expenses per Unlinked Passenger Trip	Unlinked Trips per Vehicle Revenue Mile	Unlinked Trips per Vehicle Revenue Hour
Bus	\$11.26	0.2	2.3
<b>Total</b>	<b>\$11.26</b>	<b>0.2</b>	<b>2.3</b>

Operating Expense per Vehicle Revenue Mile: Agency Total



Unlinked Passenger Trips per Vehicle Revenue Mile: Agency Total



**Notes:**

<sup>a</sup>Demand Response - Taxi (DT) and non-dedicated fleets do not report fleet age data.