

# The Tulalip Tribes of Washington

2017 Annual Agency Profile

## General Information

### Urbanized Area (UZA) Statistics - 2010 Census

Marysville, WA  
82 **Square Miles**  
145,140 **Population**  
225 **Pop. Rank out of 498 UZAs**

### Other UZAs Served

0 Washington Non-UZA

### Service Area Statistics

19 **Square Miles**  
5,303 **Population**

### Service Consumption

6,407 **Annual Unlinked Trips (UPT)**

### Service Supplied

30,008 **Annual Vehicle Revenue Miles (VRM)**  
2,793 **Annual Vehicle Revenue Hours (VRH)**

### Database Information

NTDID: 00060

Reporter Type: Tribal Reporter

## Financial Information

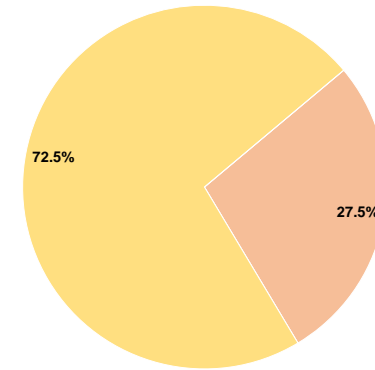
### Sources of Operating Funds Expended

Fare Revenues	\$0	0.0%
Local Funds	\$38,612	27.5%
State Funds	\$0	0.0%
Federal Assistance	\$101,703	72.5%
Other Funds	\$0	0.0%
<b>Total Operating Funds Expended</b>	<b>\$140,315</b>	<b>100.0%</b>

### Sources of Capital Funds Expended

Fare Revenues	\$0
Local Funds	\$0
State Funds	\$0
Federal Assistance	\$0
Other Funds	\$0
<b>Total Capital Funds Expended</b>	<b>\$0</b>

### Operating Funding Sources



## Modal Characteristics

### Operation Characteristics

#### Vehicles Operated at Maximum Service

Mode	Directly Operated	Purchased Transportation	Operating Expenses	Fare Revenues	Uses of Capital Funds	Annual Unlinked Trips	Annual Vehicle Revenue Miles	Annual Vehicle Revenue Hours	Average Fleet Age in Years <sup>a</sup>
Bus	1	-	\$140,315	\$0	\$0	6,407	30,008	2,793	7.0
<b>Total</b>	<b>1</b>	<b>-</b>	<b>\$140,315</b>	<b>\$0</b>	<b>\$0</b>	<b>6,407</b>	<b>30,008</b>	<b>2,793</b>	

### Performance Measures

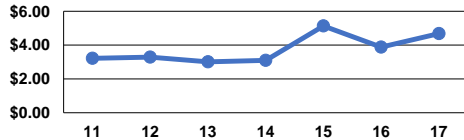
#### Service Efficiency

Mode	Operating Expenses per Vehicle Revenue Mile	Operating Expenses per Vehicle Revenue Hour
Bus	\$4.68	\$50.24
<b>Total</b>	<b>\$4.68</b>	<b>\$50.24</b>

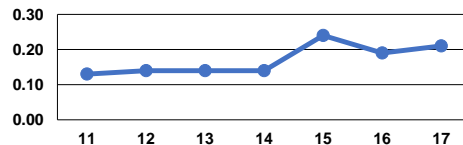
#### Service Effectiveness

Mode	Operating Expenses per Unlinked Passenger Trip	Unlinked Trips per Vehicle Revenue Mile	Unlinked Trips per Vehicle Revenue Hour
Bus	\$21.90	0.2	2.3
<b>Total</b>	<b>\$21.90</b>	<b>0.2</b>	<b>2.3</b>

Operating Expense per Vehicle Revenue Mile: Agency Total



Unlinked Passenger Trips per Vehicle Revenue Mile: Agency Total



### Notes:

<sup>a</sup>Demand Response - Taxi (DT) and non-dedicated fleets do not report fleet age data.