

Lummi Nation

2017 Annual Agency Profile

General Information

Federally Recognized Tribal Statistical Areas

Lummi Reservation, WA

Service Consumption

42,663 Annual Unlinked Trips (UPT)

Service Supplied

63,202 Annual Vehicle Revenue Miles (VRM)

5,735 Annual Vehicle Revenue Hours (VRH)

Database Information

NTDID: 00095

Reporter Type: Tribal Reporter

Financial Information

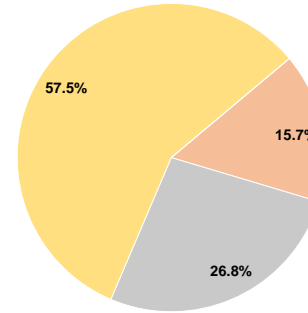
Sources of Operating Funds Expended

Fare Revenues	\$0	0.0%
Local Funds	\$53,062	15.7%
State Funds	\$90,349	26.8%
Federal Assistance	\$193,808	57.5%
Other Funds	\$0	0.0%
Total Operating Funds Expended	\$337,219	100.0%

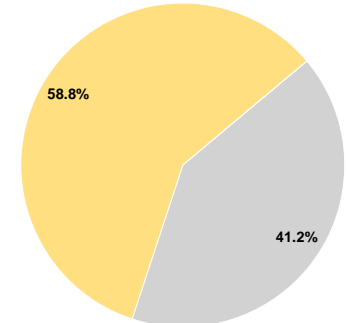
Sources of Capital Funds Expended

Fare Revenues	\$0	0.0%
Local Funds	\$0	0.0%
State Funds	\$48,000	41.2%
Federal Assistance	\$68,573	58.8%
Other Funds	\$0	0.0%
Total Capital Funds Expended	\$116,573	100.0%

Operating Funding Sources



Capital Funding Sources



Modal Characteristics

Operation Characteristics

Vehicles Operated at Maximum Service

Mode	Directly Operated	Purchased Transportation	Operating Expenses	Fare Revenues	Uses of Capital Funds	Annual Unlinked Trips	Annual Vehicle Revenue Miles	Annual Vehicle Revenue Hours	Average Fleet Age in Years ^a
Bus	3	-	\$337,219	\$0	\$116,573	42,663	63,202	5,735	3.7
Total	3	-	\$337,219	\$0	\$116,573	42,663	63,202	5,735	

Performance Measures

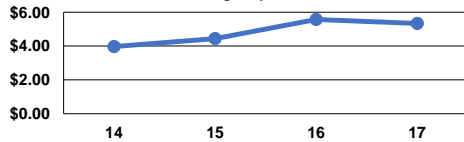
Service Efficiency

Mode	Operating Expenses per Vehicle Revenue Mile	Operating Expenses per Vehicle Revenue Hour
Bus	\$5.34	\$58.80
Total	\$5.34	\$58.80

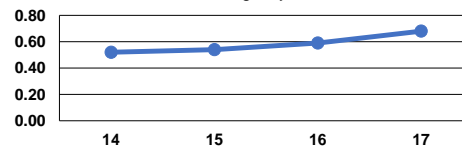
Service Effectiveness

Mode	Operating Expenses per Unlinked Passenger Trip	Unlinked Trips per Vehicle Revenue Mile	Unlinked Trips per Vehicle Revenue Hour
Bus	\$7.90	0.7	7.4
Total	\$7.90	0.7	7.4

Operating Expense per Vehicle Revenue Mile: Agency Total



Unlinked Passenger Trips per Vehicle Revenue Mile: Agency Total



Notes:

^aDemand Response - Taxi (DT) and non-dedicated fleets do not report fleet age data.