

Confederated Tribes of the Umatilla Indian Reservation

2017 Annual Agency Profile

General Information

Federally Recognized Tribal Statistical Areas
 Umatilla Reservation and Off-Reservation Trust Land, OR

Service Consumption
 73,958 Annual Unlinked Trips (UPT)

Service Supplied
 399,672 Annual Vehicle Revenue Miles (VRM)
 14,056 Annual Vehicle Revenue Hours (VRH)

Database Information
 NTDID: 00119
 Reporter Type: Tribal Reporter

Financial Information

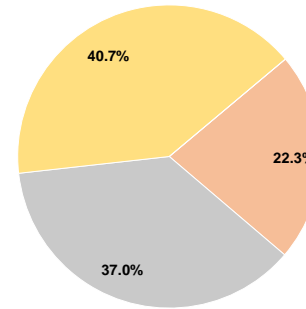
Sources of Operating Funds Expended

Fare Revenues	\$0	0.0%
Local Funds	\$284,759	22.3%
State Funds	\$471,504	37.0%
Federal Assistance	\$518,116	40.7%
Other Funds	\$0	0.0%
Total Operating Funds Expended	\$1,274,379	100.0%

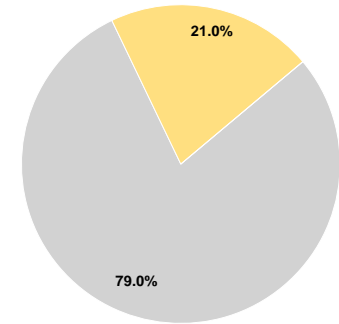
Sources of Capital Funds Expended

Fare Revenues	\$0	0.0%
Local Funds	\$0	0.0%
State Funds	\$127,366	79.0%
Federal Assistance	\$33,886	21.0%
Other Funds	\$0	0.0%
Total Capital Funds Expended	\$161,252	100.0%

Operating Funding Sources



Capital Funding Sources



Modal Characteristics

Operation Characteristics

Vehicles Operated at Maximum Service

Mode	Directly Operated	Purchased Transportation	Operating Expenses	Fare Revenues	Uses of Capital Funds	Annual Unlinked Trips	Annual Vehicle Revenue Miles	Annual Vehicle Revenue Hours	Average Fleet Age in Years ^a
Commuter Bus	5	-	\$986,589	\$0	\$80,626	48,734	309,415	9,154	3.3
Bus	3	-	\$287,790	\$0	\$80,626	25,224	90,257	4,902	6.6
Total	8	-	\$1,274,379	\$0	\$161,252	73,958	399,672	14,056	

Performance Measures

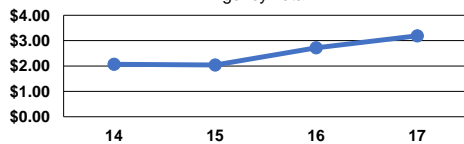
Service Efficiency

Mode	Operating Expenses per Vehicle Revenue Mile	Operating Expenses per Vehicle Revenue Hour
Commuter Bus	\$3.19	\$107.78
Bus	\$3.19	\$58.71
Total	\$3.19	\$90.66

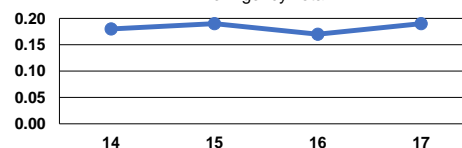
Service Effectiveness

Mode	Operating Expenses per Unlinked Passenger Trip	Unlinked Trips per Vehicle Revenue Mile	Unlinked Trips per Vehicle Revenue Hour
Commuter Bus	\$20.24	0.2	5.3
Bus	\$11.41	0.3	5.1
Total	\$17.23	0.2	5.3

Operating Expense per Vehicle Revenue Mile: Agency Total



Unlinked Passenger Trips per Vehicle Revenue Mile: Agency Total



Notes:

^aDemand Response - Taxi (DT) and non-dedicated fleets do not report fleet age data.