

County of Cumberland

2017 Annual Agency Profile

General Information

Urbanized Area (UZA) Statistics - 2010 Census

Philadelphia, PA-NJ-DE-MD
 1,981 **Square Miles**
 5,441,567 **Population**
 5 **Pop. Rank out of 498 UZAs**

Other UZAs Served

310 Vineland, NJ, 0 New Jersey Non-UZA

Service Area Statistics

678 **Square Miles**
 156,898 **Population**

Service Consumption

63,112 **Annual Unlinked Trips (UPT)**

Service Supplied

141,404 **Annual Vehicle Revenue Miles (VRM)**
 9,727 **Annual Vehicle Revenue Hours (VRH)**

Database Information

NTDID: 20201

Reporter Type: Reduced Reporter

Financial Information

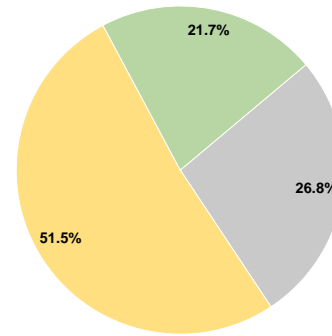
Sources of Operating Funds Expended

Fare Revenues	\$0	0.0%
Local Funds	\$0	0.0%
State Funds	\$123,597	26.8%
Federal Assistance	\$237,687	51.5%
Other Funds	\$100,128	21.7%
Total Operating Funds Expended	\$461,412	100.0%

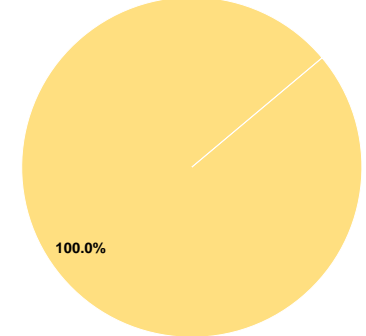
Sources of Capital Funds Expended

Fare Revenues	\$0	0.0%
Local Funds	\$0	0.0%
State Funds	\$0	0.0%
Federal Assistance	\$172,516	100.0%
Other Funds	\$0	0.0%
Total Capital Funds Expended	\$172,516	100.0%

Operating Funding Sources



Capital Funding Sources



Modal Characteristics

Operation Characteristics

Vehicles Operated at Maximum Service

Mode	Directly Operated	Purchased Transportation	Operating Expenses	Fare Revenues	Uses of Capital Funds	Annual Unlinked Trips	Annual Vehicle Revenue Miles	Annual Vehicle Revenue Hours	Average Fleet Age in Years ^a
Bus	11	-	\$461,412	\$0	\$172,516	63,112	141,404	9,727	6.4
Total	11	-	\$461,412	\$0	\$172,516	63,112	141,404	9,727	

Performance Measures

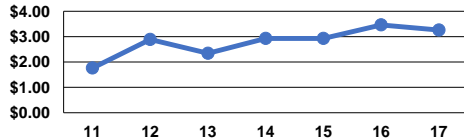
Service Efficiency

Mode	Operating Expenses per Vehicle Revenue Mile	Operating Expenses per Vehicle Revenue Hour
Bus	\$3.26	\$47.44
Total	\$3.26	\$47.44

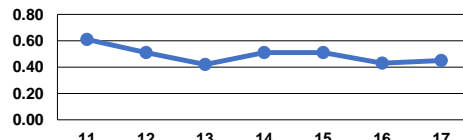
Service Effectiveness

Mode	Operating Expenses per Unlinked Passenger Trip	Unlinked Trips per Vehicle Revenue Mile	Unlinked Trips per Vehicle Revenue Hour
Bus	\$7.31	0.4	6.5
Total	\$7.31	0.4	6.5

Operating Expense per Vehicle Revenue Mile: Bus



Unlinked Passenger Trips per Vehicle Revenue Mile: Bus



Notes:

^aDemand Response - Taxi (DT) and non-dedicated fleets do not report fleet age data.