

Fredericksburg Regional Transit

2017 Annual Agency Profile

General Information

Urbanized Area (UZA) Statistics - 2010 Census

Fredericksburg, VA
 78 Square Miles
 141,238 Population
 231 Pop. Rank out of 498 UZAs

Other UZAs Served

0 Virginia Non-UZA, 8 Washington, DC-VA-MD

Service Area Statistics

242 Square Miles
 113,716 Population

Service Consumption

377,042 Annual Unlinked Trips (UPT)

Service Supplied

843,508 Annual Vehicle Revenue Miles (VRM)
 52,763 Annual Vehicle Revenue Hours (VRH)

Database Information

NTDID: 30079

Reporter Type: Reduced Reporter

Financial Information

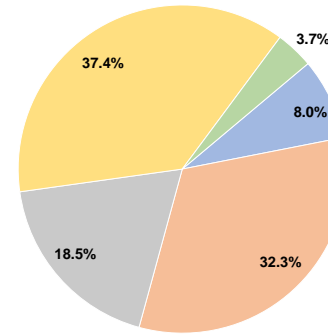
Sources of Operating Funds Expended

Fare Revenues	\$307,579	8.0%
Local Funds	\$1,238,973	32.3%
State Funds	\$710,285	18.5%
Federal Assistance	\$1,432,380	37.4%
Other Funds	\$142,783	3.7%
Total Operating Funds Expended	\$3,832,000	100.0%

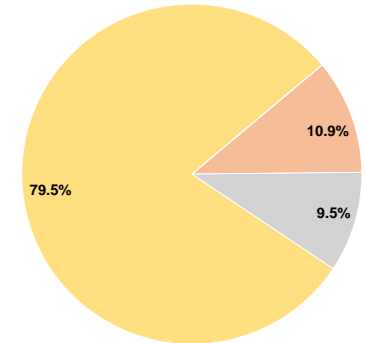
Sources of Capital Funds Expended

Fare Revenues	\$0	0.0%
Local Funds	\$208,172	10.9%
State Funds	\$181,558	9.5%
Federal Assistance	\$1,512,183	79.5%
Other Funds	\$0	0.0%
Total Capital Funds Expended	\$1,901,913	100.0%

Operating Funding Sources



Capital Funding Sources



Modal Characteristics

Operation Characteristics

Vehicles Operated at Maximum Service

Mode	Directly Operated	Purchased Transportation	Operating Expenses	Fare Revenues	Uses of Capital Funds	Annual Unlinked Trips	Annual Vehicle Revenue Miles	Annual Vehicle Revenue Hours	Average Fleet Age in Years ^a
Bus	21	-	\$3,832,000	\$307,579	\$1,901,913	377,042	843,508	52,763	2.9
Total	21	-	\$3,832,000	\$307,579	\$1,901,913	377,042	843,508	52,763	

Performance Measures

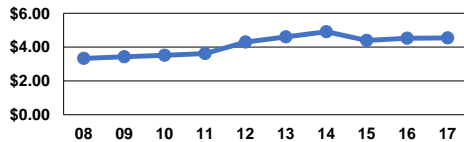
Service Efficiency

Mode	Operating Expenses per Vehicle Revenue Mile	Operating Expenses per Vehicle Revenue Hour
Bus	\$4.54	\$72.63
Total	\$4.54	\$72.63

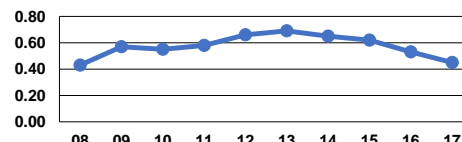
Service Effectiveness

Mode	Operating Expenses per Unlinked Passenger Trip	Unlinked Trips per Vehicle Revenue Mile	Unlinked Trips per Vehicle Revenue Hour
Bus	\$10.16	0.4	7.1
Total	\$10.16	0.4	7.1

Operating Expense per Vehicle Revenue Mile: Bus



Unlinked Passenger Trips per Vehicle Revenue Mile: Bus



Notes:

^aDemand Response - Taxi (DT) and non-dedicated fleets do not report fleet age data.