

General Information

Urbanized Area (UZA) Statistics - 2010 Census

South Bend, IN-MI
161 **Square Miles**
278,165 **Population**
136 **Pop. Rank out of 498 UZAs**

Other UZAs Served

0 Michigan Non-UZA

Service Area Statistics

120 **Square Miles**
237,932 **Population**

Service Consumption

35,882 **Annual Unlinked Trips (UPT)**

Service Supplied

122,595 **Annual Vehicle Revenue Miles (VRM)**
9,297 **Annual Vehicle Revenue Hours (VRH)**

Database Information

NTDID: 50038

Reporter Type: Reduced Reporter

Financial Information

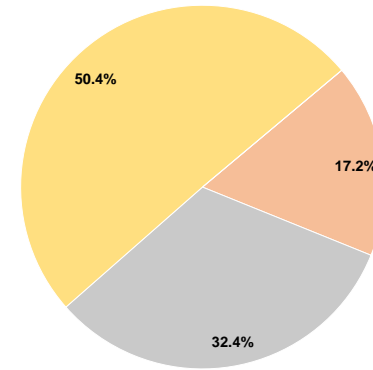
Sources of Operating Funds Expended

Fare Revenues	\$0	0.0%
Local Funds	\$87,544	17.2%
State Funds	\$164,641	32.4%
Federal Assistance	\$255,889	50.4%
Other Funds	\$0	0.0%
Total Operating Funds Expended	\$508,074	100.0%

Sources of Capital Funds Expended

Fare Revenues	\$0
Local Funds	\$0
State Funds	\$0
Federal Assistance	\$0
Other Funds	\$0
Total Capital Funds Expended	\$0

Operating Funding Sources



Modal Characteristics

Operation Characteristics

Vehicles Operated at Maximum Service

Mode	Directly Operated	Purchased Transportation	Operating Expenses	Fare Revenues	Uses of Capital Funds	Annual Unlinked Trips	Annual Vehicle Revenue Miles	Annual Vehicle Revenue Hours	Average Fleet Age in Years ^a
Demand Response	4	-	\$408,491	\$0	\$0	27,738	101,117	7,555	5.0
Bus	1	-	\$99,583	\$0	\$0	8,144	21,478	1,742	5.0
Total	5	-	\$508,074	\$0	\$0	35,882	122,595	9,297	

Performance Measures

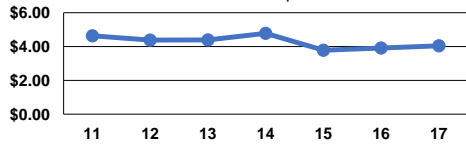
Service Efficiency

Mode	Operating Expenses per Vehicle Revenue Mile	Operating Expenses per Vehicle Revenue Hour
Demand Response	\$4.04	\$54.07
Bus	\$4.64	\$57.17
Total	\$4.14	\$54.65

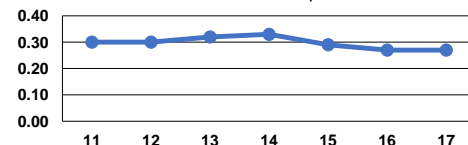
Service Effectiveness

Mode	Operating Expenses per Unlinked Passenger Trip	Unlinked Trips per Vehicle Revenue Mile	Unlinked Trips per Vehicle Revenue Hour
Demand Response	\$14.73	0.3	3.7
Bus	\$12.23	0.4	4.7
Total	\$14.16	0.3	3.9

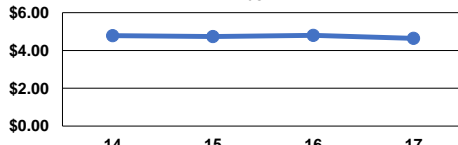
Operating Expense per Vehicle Revenue Mile: Demand Response



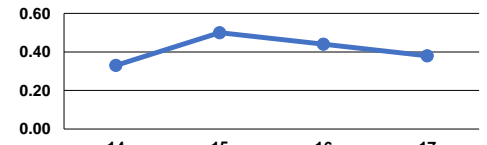
Unlinked Passenger Trips per Vehicle Revenue Mile: Demand Response



Operating Expense per Vehicle Revenue Mile: Bus



Unlinked Passenger Trips per Vehicle Revenue Mile: Bus



Notes:

^aDemand Response - Taxi (DT) and non-dedicated fleets do not report fleet age data.