

Onalaska Shared Ride Taxi City of Onalaska

2017 Annual Agency Profile

General Information

Urbanized Area (UZA) Statistics - 2010 Census

La Crosse, WI-MN
51 Square Miles
100,868 Population
298 Pop. Rank out of 498 UZAs

Service Area Statistics

22 Square Miles
33,289 Population

Service Consumption

58,709 Annual Unlinked Trips (UPT)

Service Supplied

419,990 Annual Vehicle Revenue Miles (VRM)
31,129 Annual Vehicle Revenue Hours (VRH)

Database Information

NTDID: 50152

Reporter Type: Reduced Reporter

Financial Information

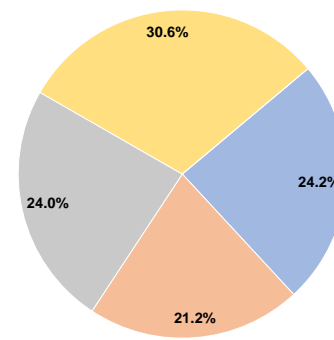
Sources of Operating Funds Expended

Fare Revenues	\$202,852	24.2%
Local Funds	\$177,230	21.2%
State Funds	\$201,111	24.0%
Federal Assistance	\$256,257	30.6%
Other Funds	\$0	0.0%
Total Operating Funds Expended	\$837,450	100.0%

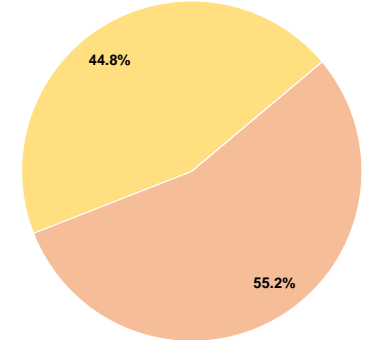
Sources of Capital Funds Expended

Fare Revenues	\$0	0.0%
Local Funds	\$18,184	55.2%
State Funds	\$0	0.0%
Federal Assistance	\$14,782	44.8%
Other Funds	\$0	0.0%
Total Capital Funds Expended	\$32,966	100.0%

Operating Funding Sources



Capital Funding Sources



Modal Characteristics

Operation Characteristics

Vehicles Operated at Maximum Service

Mode	Directly Operated	Purchased Transportation	Operating Expenses	Fare Revenues	Uses of Capital Funds	Annual Unlinked Trips	Annual Vehicle Revenue Miles	Annual Vehicle Revenue Hours	Average Fleet Age in Years ^a
Demand Response	-	9	\$837,450	\$202,852	\$32,966	58,709	419,990	31,129	2.6
Total	-	9	\$837,450	\$202,852	\$32,966	58,709	419,990	31,129	

Performance Measures

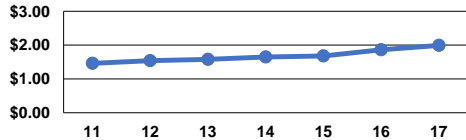
Service Efficiency

Mode	Operating Expenses per Vehicle Revenue Mile	Operating Expenses per Vehicle Revenue Hour
Demand Response	\$1.99	\$26.90
Total	\$1.99	\$26.90

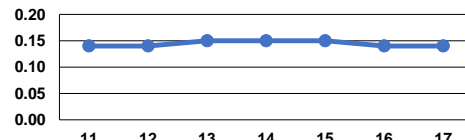
Service Effectiveness

Mode	Operating Expenses per Unlinked Passenger Trip	Unlinked Trips per Vehicle Revenue Mile	Unlinked Trips per Vehicle Revenue Hour
Demand Response	\$14.26	0.1	1.9
Total	\$14.26	0.1	1.9

Operating Expense per Vehicle Revenue Mile: Demand Response



Unlinked Passenger Trips per Vehicle Revenue Mile: Demand Response



Notes:

^aDemand Response - Taxi (DT) and non-dedicated fleets do not report fleet age data.