

TransPorte

2017 Annual Agency Profile

General Information

Urbanized Area (UZA) Statistics - 2010 Census

Michigan City-La Porte, IN-MI
 39 **Square Miles**
 66,025 **Population**
 418 **Pop. Rank out of 498 UZAs**

Service Area Statistics

13 **Square Miles**
 21,692 **Population**

Service Consumption

42,424 **Annual Unlinked Trips (UPT)**

Service Supplied

120,941 **Annual Vehicle Revenue Miles (VRM)**
 12,569 **Annual Vehicle Revenue Hours (VRH)**

Database Information

NTDID: 50162

Reporter Type: Reduced Reporter

Financial Information

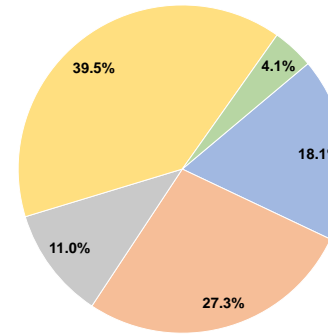
Sources of Operating Funds Expended

Fare Revenues	\$110,731	18.1%
Local Funds	\$166,329	27.3%
State Funds	\$67,255	11.0%
Federal Assistance	\$240,976	39.5%
Other Funds	\$24,961	4.1%
Total Operating Funds Expended	\$610,252	100.0%

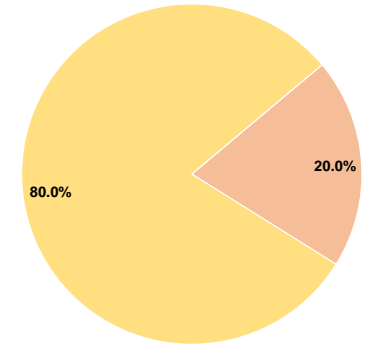
Sources of Capital Funds Expended

Fare Revenues	\$0	0.0%
Local Funds	\$34,374	20.0%
State Funds	\$0	0.0%
Federal Assistance	\$137,496	80.0%
Other Funds	\$0	0.0%
Total Capital Funds Expended	\$171,870	100.0%

Operating Funding Sources



Capital Funding Sources



Modal Characteristics

Operation Characteristics

Vehicles Operated at Maximum Service

Mode	Directly Operated	Purchased Transportation	Operating Expenses	Fare Revenues	Uses of Capital Funds	Annual Unlinked Trips	Annual Vehicle Revenue Miles	Annual Vehicle Revenue Hours	Average Fleet Age in Years ^a
Demand Response	5	-	\$610,252	\$110,731	\$171,870	42,424	120,941	12,569	1.6
Total	5	-	\$610,252	\$110,731	\$171,870	42,424	120,941	12,569	

Performance Measures

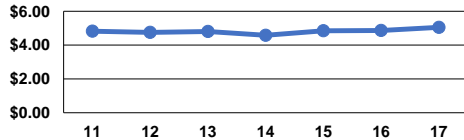
Service Efficiency

Mode	Operating Expenses per Vehicle Revenue Mile	Operating Expenses per Vehicle Revenue Hour
Demand Response	\$5.05	\$48.55
Total	\$5.05	\$48.55

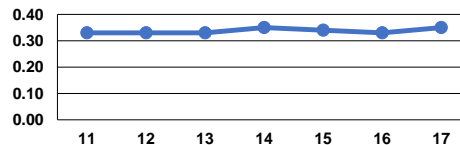
Service Effectiveness

Mode	Operating Expenses per Unlinked Passenger Trip	Unlinked Trips per Vehicle Revenue Mile	Unlinked Trips per Vehicle Revenue Hour
Demand Response	\$14.38	0.4	3.4
Total	\$14.38	0.4	3.4

Operating Expense per Vehicle Revenue Mile: Demand Response



Unlinked Passenger Trips per Vehicle Revenue Mile: Demand Response



Notes:

^aDemand Response - Taxi (DT) and non-dedicated fleets do not report fleet age data.