

Menominee Indian Tribe of Wisconsin

2017 Annual Agency Profile

General Information

Federally Recognized Tribal Statistical Areas

Menominee Reservation and Off-Reservation Trust Land, WI

Service Consumption

165,505 Annual Unlinked Trips (UPT)

Service Supplied

1,534,181 Annual Vehicle Revenue Miles (VRM)

67,314 Annual Vehicle Revenue Hours (VRH)

Database Information

NTDID: 55228

Reporter Type: Tribal Reporter

Financial Information

Sources of Operating Funds Expended

Fare Revenues	\$102,615	2.0%
Local Funds	\$154,602	3.0%
State Funds	\$389,240	7.6%
Federal Assistance	\$3,297,966	64.3%
Other Funds	\$1,183,075	23.1%

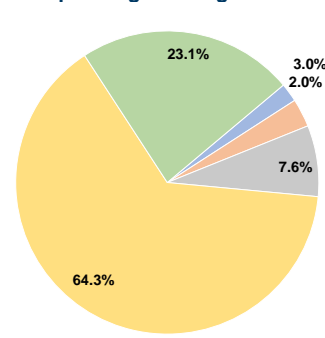
Total Operating Funds Expended \$5,127,498 100.0%

Sources of Capital Funds Expended

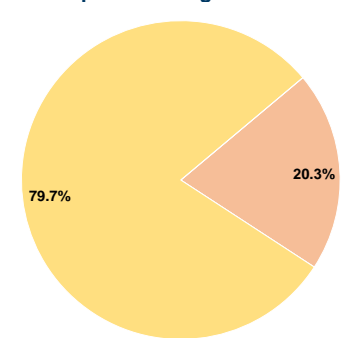
Fare Revenues	\$0	0.0%
Local Funds	\$83,405	20.3%
State Funds	\$0	0.0%
Federal Assistance	\$327,310	79.7%
Other Funds	\$0	0.0%

Total Capital Funds Expended \$410,715 100.0%

Operating Funding Sources



Capital Funding Sources



Modal Characteristics

Operation Characteristics

Vehicles Operated at Maximum Service

Mode	Directly Operated	Purchased Transportation	Operating Expenses	Fare Revenues	Uses of Capital Funds	Annual Unlinked Trips	Annual Vehicle Revenue Miles	Annual Vehicle Revenue Hours	Average Fleet Age in Years ^a
Demand Response	33 ¹	-	\$3,624,155 ¹	\$74,908	\$410,715 ¹	119,014	1,112,037	48,142	7.3
Bus	9 ¹	-	\$1,340,440 ¹	\$27,707	\$0 ¹	46,491	422,144	19,172	7.3
Total	42	-	\$4,964,595	\$102,615	\$410,715	165,505	1,534,181	67,314	

Performance Measures

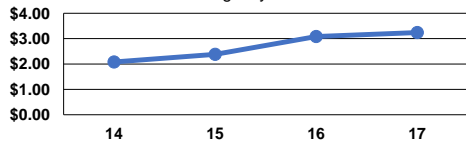
Service Efficiency

Mode	Operating Expenses per Vehicle Revenue Mile	Operating Expenses per Vehicle Revenue Hour
Demand Response	\$3.26	\$75.28
Bus	\$3.18	\$69.92
Total	\$3.24	\$73.75

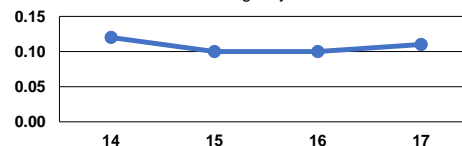
Service Effectiveness

Mode	Operating Expenses per Unlinked Passenger Trip	Unlinked Trips per Vehicle Revenue Mile	Unlinked Trips per Vehicle Revenue Hour
Demand Response	\$30.45	0.1	2.5
Bus	\$28.83	0.1	2.4
Total	\$30.00	0.1	2.5

Operating Expense per Vehicle Revenue Mile: Agency Total



Unlinked Passenger Trips per Vehicle Revenue Mile: Agency Total



Notes:

^aDemand Response - Taxi (DT) and non-dedicated fleets do not report fleet age data.

¹Excludes data for purchased transportation filed separately.

*This agency has a purchased transportation relationship in which they sell service to Lac du Flambeau Band of Lake Superior Chippewa Indians (NTDID: 55300), and in which the data are captured in another report for mode DR/PT.

*This agency has a purchased transportation relationship in which they sell service to Lac du Flambeau Band of Lake Superior Chippewa Indians (NTDID: 55300), and in which the data are captured in another report for mode MB/PT.