

Leech Lake Band of Ojibwe

2017 Annual Agency Profile

General Information

Federally Recognized Tribal Statistical Areas
 Leech Lake Reservation and Off-Reservation Trust Land, MN

Service Consumption
 16,893 Annual Unlinked Trips (UPT)

Service Supplied
 65,129 Annual Vehicle Revenue Miles (VRM)
 4,160 Annual Vehicle Revenue Hours (VRH)

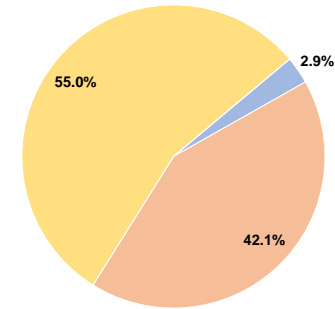
Database Information
 NTDID: 55258
 Reporter Type: Tribal Reporter

Financial Information

Sources of Operating Funds Expended			
Fare Revenues	\$7,083	2.9%	
Local Funds	\$101,866	42.1%	
State Funds	\$0	0.0%	
Federal Assistance	\$133,051	55.0%	
Other Funds	\$0	0.0%	
Total Operating Funds Expended	\$242,000	100.0%	

Sources of Capital Funds Expended	
Fare Revenues	\$0
Local Funds	\$0
State Funds	\$0
Federal Assistance	\$0
Other Funds	\$0
Total Capital Funds Expended	\$0

Operating Funding Sources



Modal Characteristics

Operation Characteristics

Vehicles Operated at Maximum Service

Mode	Directly Operated	Purchased Transportation	Operating Expenses	Fare Revenues	Uses of Capital Funds	Annual Unlinked Trips	Annual Vehicle Revenue Miles	Annual Vehicle Revenue Hours	Average Fleet Age in Years ^a
Demand Response	2	-	\$242,000	\$7,083	\$0	16,893	65,129	4,160	6.0
Total	2	-	\$242,000	\$7,083	\$0	16,893	65,129	4,160	

Performance Measures

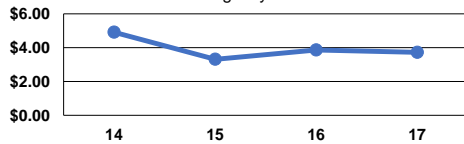
Service Efficiency

Mode	Operating Expenses per Vehicle Revenue Mile	Operating Expenses per Vehicle Revenue Hour
Demand Response	\$3.72	\$58.17
Total	\$3.72	\$58.17

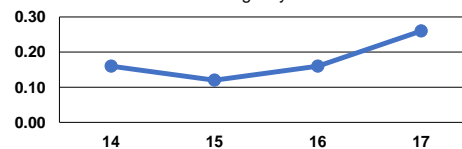
Service Effectiveness

Mode	Operating Expenses per Unlinked Passenger Trip	Unlinked Trips per Vehicle Revenue Mile	Unlinked Trips per Vehicle Revenue Hour
Demand Response	\$14.33	0.3	4.1
Total	\$14.33	0.3	4.1

Operating Expense per Vehicle Revenue Mile: Agency Total



Unlinked Passenger Trips per Vehicle Revenue Mile: Agency Total



Notes:

^aDemand Response - Taxi (DT) and non-dedicated fleets do not report fleet age data.