

General Information

Urbanized Area (UZA) Statistics - 2010 Census

Madison, WI
151 **Square Miles**
401,661 **Population**
92 **Pop. Rank out of 498 UZAs**

Service Area Statistics

5 **Square Miles**
12,611 **Population**

Service Consumption

29,811 **Annual Unlinked Trips (UPT)**

Service Supplied

99,179 **Annual Vehicle Revenue Miles (VRM)**
11,361 **Annual Vehicle Revenue Hours (VRH)**

Database Information

NTDID: 55308

Reporter Type: Reduced Reporter

Financial Information

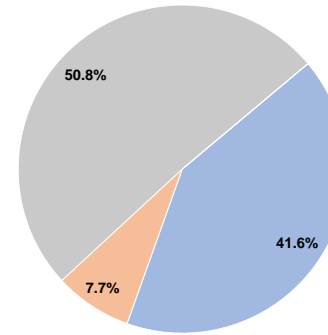
Sources of Operating Funds Expended

Fare Revenues	\$106,875	41.6%
Local Funds	\$19,701	7.7%
State Funds	\$130,500	50.8%
Federal Assistance	\$0	0.0%
Other Funds	\$0	0.0%
Total Operating Funds Expended	\$257,076	100.0%

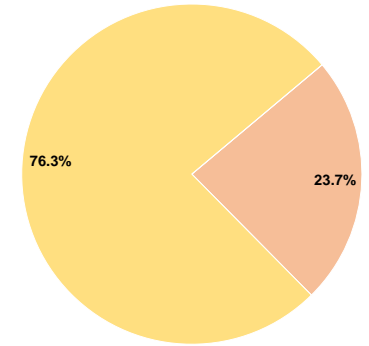
Sources of Capital Funds Expended

Fare Revenues	\$0	0.0%
Local Funds	\$16,124	23.7%
State Funds	\$0	0.0%
Federal Assistance	\$51,895	76.3%
Other Funds	\$0	0.0%
Total Capital Funds Expended	\$68,019	100.0%

Operating Funding Sources



Capital Funding Sources



Modal Characteristics

Operation Characteristics

Vehicles Operated at Maximum Service

Mode	Directly Operated	Purchased Transportation	Operating Expenses	Fare Revenues	Uses of Capital Funds	Annual Unlinked Trips	Annual Vehicle Revenue Miles	Annual Vehicle Revenue Hours	Average Fleet Age in Years ^a
Demand Response - Taxi	-	5	\$257,076	\$106,875	\$68,019	29,811	99,179	11,361	0.0
Total	-	5	\$257,076	\$106,875	\$68,019	29,811	99,179	11,361	

Performance Measures

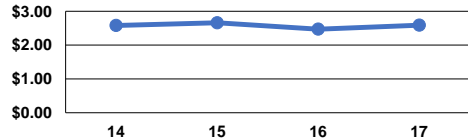
Service Efficiency

Mode	Operating Expenses per Vehicle Revenue Mile	Operating Expenses per Vehicle Revenue Hour
Demand Response - Taxi	\$2.59	\$22.63
Total	\$2.59	\$22.63

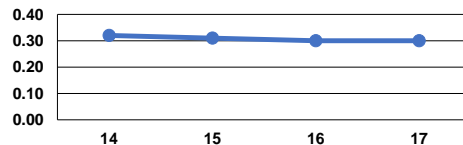
Service Effectiveness

Mode	Operating Expenses per Unlinked Passenger Trip	Unlinked Trips per Vehicle Revenue Mile	Unlinked Trips per Vehicle Revenue Hour
Demand Response - Taxi	\$8.62	0.3	2.6
Total	\$8.62	0.3	2.6

Operating Expense per Vehicle Revenue Mile: Demand Resp. - Taxi



Unlinked Passenger Trips per Vehicle Revenue Mile: Demand Resp. - Taxi



Notes:

^aDemand Response - Taxi (DT) and non-dedicated fleets do not report fleet age data.