

Choctaw Nation of Oklahoma

2017 Annual Agency Profile

General Information

Federally Recognized Tribal Statistical Areas

Choctaw OTSA, OK

Service Consumption

42,926 Annual Unlinked Trips (UPT)

Service Supplied

917,357 Annual Vehicle Revenue Miles (VRM)

24,394 Annual Vehicle Revenue Hours (VRH)

Database Information

NTDID: 60003

Reporter Type: Tribal Reporter

Financial Information

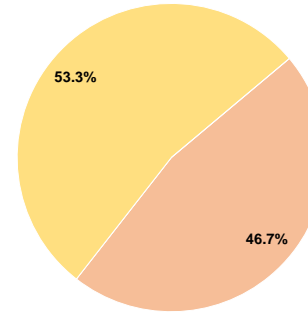
Sources of Operating Funds Expended

Fare Revenues	\$0	0.0%
Local Funds	\$825,537	46.7%
State Funds	\$0	0.0%
Federal Assistance	\$943,448	53.3%
Other Funds	\$0	0.0%
Total Operating Funds Expended	\$1,768,985	100.0%

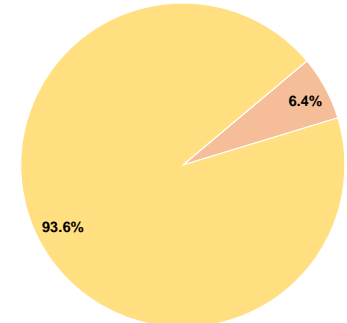
Sources of Capital Funds Expended

Fare Revenues	\$0	0.0%
Local Funds	\$33,334	6.4%
State Funds	\$0	0.0%
Federal Assistance	\$486,978	93.6%
Other Funds	\$0	0.0%
Total Capital Funds Expended	\$520,312	100.0%

Operating Funding Sources



Capital Funding Sources



Modal Characteristics

Operation Characteristics

Vehicles Operated at Maximum Service

Mode	Directly Operated	Purchased Transportation	Operating Expenses	Fare Revenues	Uses of Capital Funds	Annual Unlinked Trips	Annual Vehicle Revenue Miles	Annual Vehicle Revenue Hours	Average Fleet Age in Years ^a
Demand Response	24	-	\$1,768,985	\$0	\$520,312	42,926	917,357	24,394	2.9
Total	24	-	\$1,768,985	\$0	\$520,312	42,926	917,357	24,394	

Performance Measures

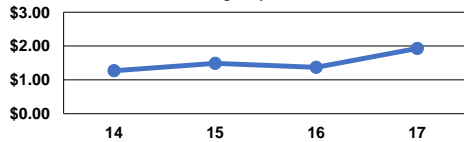
Service Efficiency

Mode	Operating Expenses per Vehicle Revenue Mile	Operating Expenses per Vehicle Revenue Hour
Demand Response	\$1.93	\$72.52
Total	\$1.93	\$72.52

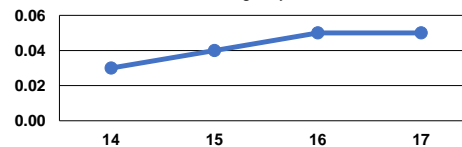
Service Effectiveness

Mode	Operating Expenses per Unlinked Passenger Trip	Unlinked Trips per Vehicle Revenue Mile	Unlinked Trips per Vehicle Revenue Hour
Demand Response	\$41.21	0.0	1.8
Total	\$41.21	0.0	1.8

Operating Expense per Vehicle Revenue Mile: Agency Total



Unlinked Passenger Trips per Vehicle Revenue Mile: Agency Total



Notes:

^aDemand Response - Taxi (DT) and non-dedicated fleets do not report fleet age data.