

Special Programs for Aging Needs

2017 Annual Agency Profile

General Information

Urbanized Area (UZA) Statistics - 2010 Census

Denton-Lewisville, TX
 145 **Square Miles**
 366,174 **Population**
 104 **Pop. Rank out of 498 UZAs**

Other UZAs Served

0 Texas Non-UZA, 6 Dallas-Fort Worth-Arlington, TX

Service Area Statistics

878 **Square Miles**
 806,180 **Population**

Service Consumption

60,811 **Annual Unlinked Trips (UPT)**

Service Supplied

560,696 **Annual Vehicle Revenue Miles (VRM)**
 31,067 **Annual Vehicle Revenue Hours (VRH)**

Database Information

NTDID: 60116

Reporter Type: Reduced Reporter

Financial Information

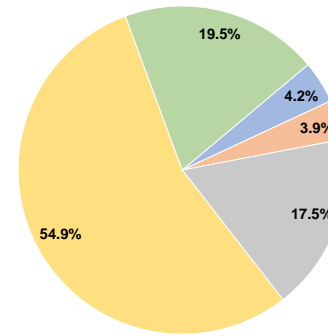
Sources of Operating Funds Expended

Fare Revenues	\$78,682	4.2%
Local Funds	\$74,000	3.9%
State Funds	\$330,125	17.5%
Federal Assistance	\$1,035,100	54.9%
Other Funds	\$368,278	19.5%
Total Operating Funds Expended	\$1,886,185	100.0%

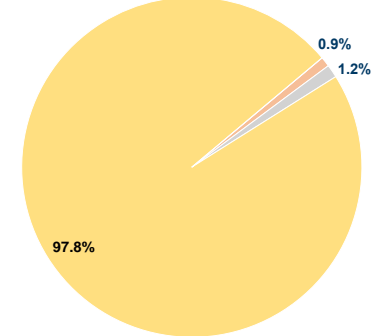
Sources of Capital Funds Expended

Fare Revenues	\$0	0.0%
Local Funds	\$5,566	0.9%
State Funds	\$7,277	1.2%
Federal Assistance	\$575,973	97.8%
Other Funds	\$0	0.0%
Total Capital Funds Expended	\$588,816	100.0%

Operating Funding Sources



Capital Funding Sources



Modal Characteristics

Operation Characteristics

Vehicles Operated at Maximum Service

Mode	Directly Operated	Purchased Transportation	Operating Expenses	Fare Revenues	Uses of Capital Funds	Annual Unlinked Trips	Annual Vehicle Revenue Miles	Annual Vehicle Revenue Hours	Average Fleet Age in Years ^a
Demand Response	29	-	\$1,886,185	\$78,682	\$588,816	60,811	560,696	31,067	2.5
Total	29	-	\$1,886,185	\$78,682	\$588,816	60,811	560,696	31,067	

Performance Measures

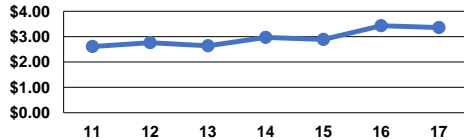
Service Efficiency

Mode	Operating Expenses per Vehicle Revenue Mile	Operating Expenses per Vehicle Revenue Hour
Demand Response	\$3.36	\$60.71
Total	\$3.36	\$60.71

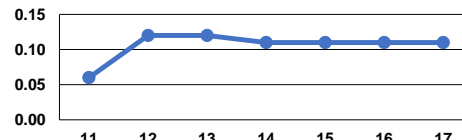
Service Effectiveness

Mode	Operating Expenses per Unlinked Passenger Trip	Unlinked Trips per Vehicle Revenue Mile	Unlinked Trips per Vehicle Revenue Hour
Demand Response	\$31.02	0.1	2.0
Total	\$31.02	0.1	2.0

Operating Expense per Vehicle Revenue Mile: Demand Response



Unlinked Passenger Trips per Vehicle Revenue Mile: Demand Response



Notes:

^aDemand Response - Taxi (DT) and non-dedicated fleets do not report fleet age data.