

Pueblo of Santa Ana

2017 Annual Agency Profile

General Information

Federally Recognized Tribal Statistical Areas

Santa Ana Pueblo, NM

Service Consumption

37,928 Annual Unlinked Trips (UPT)

Service Supplied

76,893 Annual Vehicle Revenue Miles (VRM)

6,007 Annual Vehicle Revenue Hours (VRH)

Database Information

NTDID: 66152

Reporter Type: Tribal Reporter

Financial Information

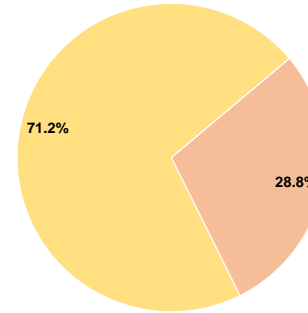
Sources of Operating Funds Expended

Fare Revenues	\$0	0.0%
Local Funds	\$42,521	28.8%
State Funds	\$0	0.0%
Federal Assistance	\$105,299	71.2%
Other Funds	\$0	0.0%
Total Operating Funds Expended	\$147,820	100.0%

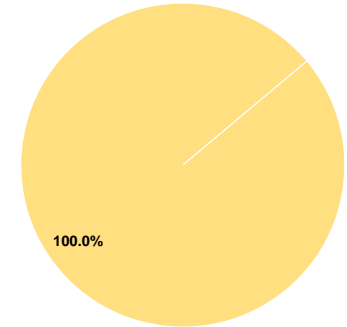
Sources of Capital Funds Expended

Fare Revenues	\$0	0.0%
Local Funds	\$0	0.0%
State Funds	\$0	0.0%
Federal Assistance	\$81,635	100.0%
Other Funds	\$0	0.0%
Total Capital Funds Expended	\$81,635	100.0%

Operating Funding Sources



Capital Funding Sources



Modal Characteristics

Operation Characteristics

Vehicles Operated at Maximum Service

Mode	Directly Operated	Purchased Transportation	Operating Expenses	Fare Revenues	Uses of Capital Funds	Annual Unlinked Trips	Annual Vehicle Revenue Miles	Annual Vehicle Revenue Hours	Average Fleet Age in Years ^a
Bus	6	-	\$147,820	\$0	\$81,635	37,928	76,893	6,007	5.5
Total	6	-	\$147,820	\$0	\$81,635	37,928	76,893	6,007	

Performance Measures

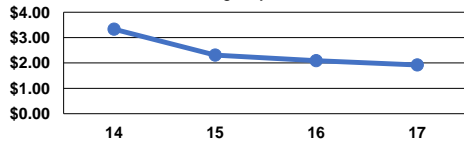
Service Efficiency

Mode	Operating Expenses per Vehicle Revenue Mile	Operating Expenses per Vehicle Revenue Hour
Bus	\$1.92	\$24.61
Total	\$1.92	\$24.61

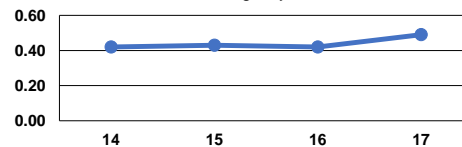
Service Effectiveness

Mode	Operating Expenses per Unlinked Passenger Trip	Unlinked Trips per Vehicle Revenue Mile	Unlinked Trips per Vehicle Revenue Hour
Bus	\$3.90	0.5	6.3
Total	\$3.90	0.5	6.3

Operating Expense per Vehicle Revenue Mile: Agency Total



Unlinked Passenger Trips per Vehicle Revenue Mile: Agency Total



Notes:

^aDemand Response - Taxi (DT) and non-dedicated fleets do not report fleet age data.