

St. Joseph Transit

2017 Annual Agency Profile

General Information

Urbanized Area (UZA) Statistics - 2010 Census

St. Joseph, MO-KS
42 **Square Miles**
81,176 **Population**
354 **Pop. Rank out of 498 UZAs**

Service Area Statistics

39 **Square Miles**
78,004 **Population**

Service Consumption

417,497 **Annual Unlinked Trips (UPT)**

Service Supplied

755,895 **Annual Vehicle Revenue Miles (VRM)**
63,616 **Annual Vehicle Revenue Hours (VRH)**

Database Information

NTDID: 70032

Reporter Type: Reduced Reporter

Financial Information

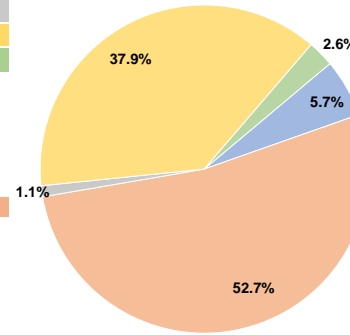
Sources of Operating Funds Expended

Fare Revenues	\$283,382	5.7%
Local Funds	\$2,609,573	52.7%
State Funds	\$53,555	1.1%
Federal Assistance	\$1,878,448	37.9%
Other Funds	\$128,295	2.6%
Total Operating Funds Expended	\$4,953,253	100.0%

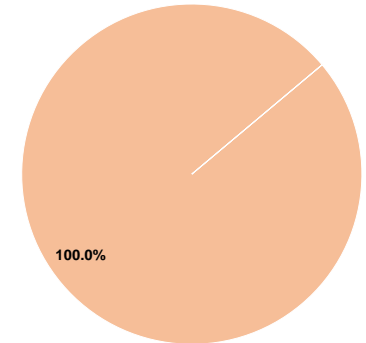
Sources of Capital Funds Expended

Fare Revenues	\$0	0.0%
Local Funds	\$56,720	100.0%
State Funds	\$0	0.0%
Federal Assistance	\$0	0.0%
Other Funds	\$0	0.0%
Total Capital Funds Expended	\$56,720	100.0%

Operating Funding Sources



Capital Funding Sources



Modal Characteristics

Operation Characteristics

Vehicles Operated at Maximum Service

Mode	Directly Operated	Purchased Transportation	Operating Expenses	Fare Revenues	Uses of Capital Funds	Annual Unlinked Trips	Annual Vehicle Revenue Miles	Annual Vehicle Revenue Hours	Average Fleet Age in Years ^a
Bus	16	-	\$4,953,253	\$283,382	\$56,720	417,497	755,895	63,616	12.2
Total	16	-	\$4,953,253	\$283,382	\$56,720	417,497	755,895	63,616	

Performance Measures

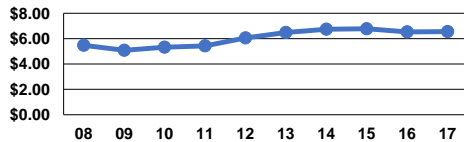
Service Efficiency

Mode	Operating Expenses per Vehicle Revenue Mile	Operating Expenses per Vehicle Revenue Hour
Bus	\$6.55	\$77.86
Total	\$6.55	\$77.86

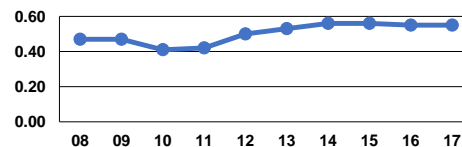
Service Effectiveness

Mode	Operating Expenses per Unlinked Passenger Trip	Unlinked Trips per Vehicle Revenue Mile	Unlinked Trips per Vehicle Revenue Hour
Bus	\$11.86	0.6	6.6
Total	\$11.86	0.6	6.6

Operating Expense per Vehicle Revenue Mile: Bus



Unlinked Passenger Trips per Vehicle Revenue Mile: Bus



Notes:

^aDemand Response - Taxi (DT) and non-dedicated fleets do not report fleet age data.