

# Prairie Band Potawatomi Nation

2017 Annual Agency Profile

## General Information

### Federally Recognized Tribal Statistical Areas

Prairie Band of Potawatomi Nation Reservation, KS

### Service Consumption

11,383 Annual Unlinked Trips (UPT)

### Service Supplied

186,649 Annual Vehicle Revenue Miles (VRM)

4,591 Annual Vehicle Revenue Hours (VRH)

### Database Information

NTDID: 77075

Reporter Type: Tribal Reporter

## Financial Information

### Sources of Operating Funds Expended

Fare Revenues	\$12,332	3.3%
Local Funds	\$139,187	37.0%
State Funds	\$16,260	4.3%
Federal Assistance	\$208,595	55.4%
Other Funds	\$0	0.0%

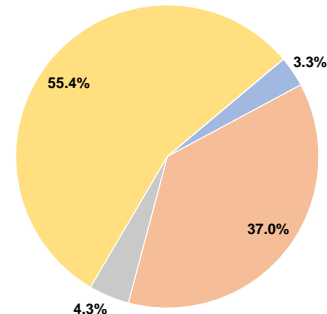
**Total Operating Funds Expended \$376,374 100.0%**

### Sources of Capital Funds Expended

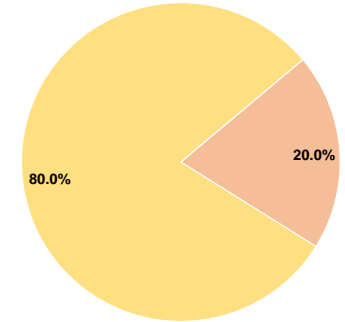
Fare Revenues	\$0	0.0%
Local Funds	\$7,909	20.0%
State Funds	\$0	0.0%
Federal Assistance	\$31,634	80.0%
Other Funds	\$0	0.0%

**Total Capital Funds Expended \$39,543 100.0%**

### Operating Funding Sources



### Capital Funding Sources



## Modal Characteristics

### Operation Characteristics

#### Vehicles Operated at Maximum Service

Mode	Directly Operated	Purchased Transportation	Operating Expenses	Fare Revenues	Uses of Capital Funds	Annual Unlinked Trips	Annual Vehicle Revenue Miles	Annual Vehicle Revenue Hours	Average Fleet Age in Years <sup>a</sup>
Demand Response	6	-	\$376,374	\$12,332	\$39,543	11,383	186,649	4,591	4.1
<b>Total</b>	<b>6</b>	<b>-</b>	<b>\$376,374</b>	<b>\$12,332</b>	<b>\$39,543</b>	<b>11,383</b>	<b>186,649</b>	<b>4,591</b>	

### Performance Measures

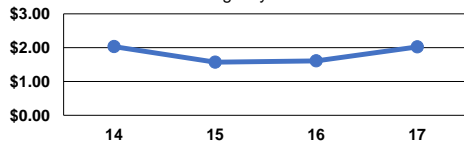
#### Service Efficiency

Mode	Operating Expenses per Vehicle Revenue Mile	Operating Expenses per Vehicle Revenue Hour
Demand Response	\$2.02	\$81.98
<b>Total</b>	<b>\$2.02</b>	<b>\$81.98</b>

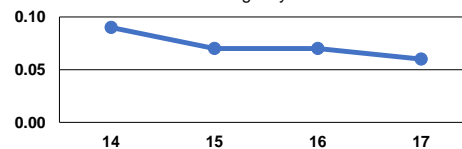
#### Service Effectiveness

Mode	Operating Expenses per Unlinked Passenger Trip	Unlinked Trips per Vehicle Revenue Mile	Unlinked Trips per Vehicle Revenue Hour
Demand Response	\$33.06	0.1	2.5
<b>Total</b>	<b>\$33.06</b>	<b>0.1</b>	<b>2.5</b>

Operating Expense per Vehicle Revenue Mile: Agency Total



Unlinked Passenger Trips per Vehicle Revenue Mile: Agency Total



**Notes:**

<sup>a</sup>Demand Response - Taxi (DT) and non-dedicated fleets do not report fleet age data.