

General Information

Federally Recognized Tribal Statistical Areas

Spirit Lake Reservation, ND

Service Consumption

12,854 Annual Unlinked Trips (UPT)

Service Supplied

204,212 Annual Vehicle Revenue Miles (VRM)

9,536 Annual Vehicle Revenue Hours (VRH)

Database Information

NTDID: 88128

Reporter Type: Tribal Reporter

Financial Information

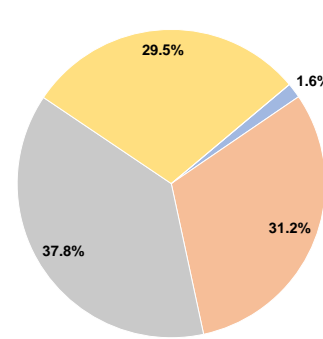
Sources of Operating Funds Expended

Fare Revenues	\$5,215	1.6%
Local Funds	\$102,663	31.2%
State Funds	\$124,528	37.8%
Federal Assistance	\$97,035	29.5%
Other Funds	\$0	0.0%
Total Operating Funds Expended	\$329,441	100.0%

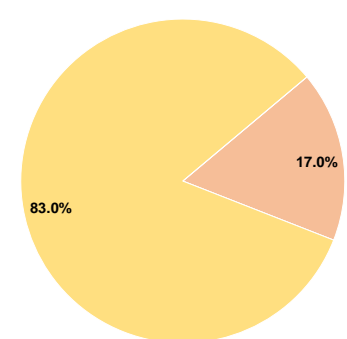
Sources of Capital Funds Expended

Fare Revenues	\$0	0.0%
Local Funds	\$10,400	17.0%
State Funds	\$0	0.0%
Federal Assistance	\$50,600	83.0%
Other Funds	\$0	0.0%
Total Capital Funds Expended	\$61,000	100.0%

Operating Funding Sources



Capital Funding Sources



Modal Characteristics

Operation Characteristics

Vehicles Operated at Maximum Service

Mode	Directly Operated	Purchased Transportation	Operating Expenses	Fare Revenues	Uses of Capital Funds	Annual Unlinked Trips	Annual Vehicle Revenue Miles	Annual Vehicle Revenue Hours	Average Fleet Age in Years ^a
Demand Response	5	-	\$329,441	\$5,215	\$61,000	12,854	204,212	9,536	4.0
Total	5	-	\$329,441	\$5,215	\$61,000	12,854	204,212	9,536	

Performance Measures

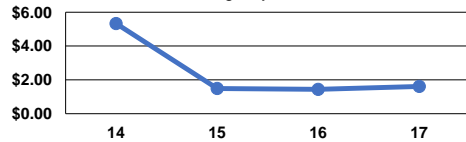
Service Efficiency

Mode	Operating Expenses per Vehicle Revenue Mile	Operating Expenses per Vehicle Revenue Hour
Demand Response	\$1.61	\$34.55
Total	\$1.61	\$34.55

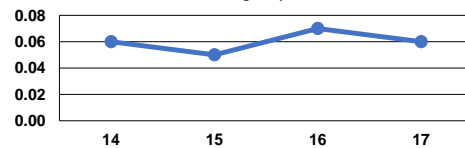
Service Effectiveness

Mode	Operating Expenses per Unlinked Passenger Trip	Unlinked Trips per Vehicle Revenue Mile	Unlinked Trips per Vehicle Revenue Hour
Demand Response	\$25.63	0.1	1.3
Total	\$25.63	0.1	1.3

Operating Expense per Vehicle Revenue Mile: Agency Total



Unlinked Passenger Trips per Vehicle Revenue Mile: Agency Total



Notes:

^aDemand Response - Taxi (DT) and non-dedicated fleets do not report fleet age data.