

Confederated Tribes of the Colville Indian Reservation

2018 Annual Agency Profile

General Information

Federally Recognized Tribal Statistical Areas
Colville Reservation and Off-Reservation Trust Land, WA

Service Consumption
154,408 Annual Unlinked Trips (UPT)

Service Supplied
113,104 Annual Vehicle Revenue Miles (VRM)
9,074 Annual Vehicle Revenue Hours (VRH)

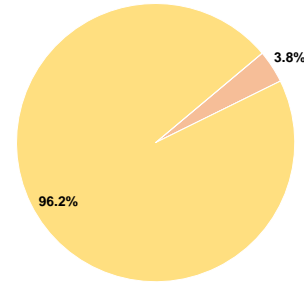
Database Information
NTDID: 00004
Reporter Type: Tribal Reporter

Financial Information

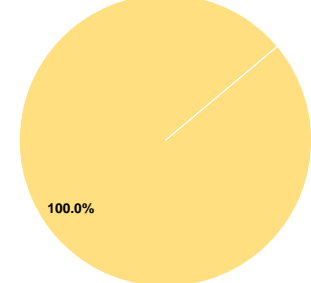
Sources of Operating Funds Expended			
Fare Revenues	\$0	0.0%	
Local Funds	\$37,200	3.8%	
State Funds	\$0	0.0%	
Federal Assistance	\$936,011	96.2%	
Other Funds	\$0	0.0%	
Total Operating Funds Expended	\$973,211	100.0%	

Sources of Capital Funds Expended			
Fare Revenues	\$0	0.0%	
Local Funds	\$0	0.0%	
State Funds	\$0	0.0%	
Federal Assistance	\$242,282	100.0%	
Other Funds	\$0	0.0%	
Total Capital Funds Expended	\$242,282	100.0%	

Operating Funding Sources



Capital Funding Sources



Modal Characteristics

Operation Characteristics

Vehicles Operated at Maximum Service

Mode	Directly Operated	Purchased Transportation	Operating Expenses	Fare Revenues	Uses of Capital Funds	Annual Unlinked Trips	Annual Vehicle Revenue Miles	Annual Vehicle Revenue Hours	Average Fleet Age in Years ^a
Ferryboat	1	-	\$639,912	\$0	\$0	149,487	24,222	5,394	37.0
Bus	3	-	\$296,099	\$0	\$242,282	4,921	88,882	3,680	4.1
Total	4	-	\$936,011	\$0	\$242,282	154,408	113,104	9,074	

Performance Measures

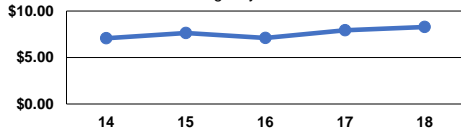
Service Efficiency

Mode	Operating Expenses per Vehicle Revenue Mile	Operating Expenses per Vehicle Revenue Hour
Ferryboat	\$26.42	\$118.63
Bus	\$3.33	\$80.46
Total	\$8.28	\$103.15

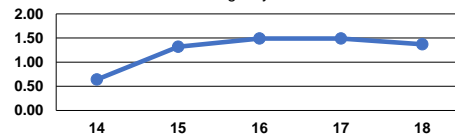
Service Effectiveness

Mode	Operating Expenses per Unlinked Passenger Trip	Unlinked Trips per Vehicle Revenue Mile	Unlinked Trips per Vehicle Revenue Hour
Ferryboat	\$4.28	6.2	27.7
Bus	\$60.17	0.1	1.3
Total	\$6.06	1.4	17.0

Operating Expense per Vehicle Revenue Mile: Agency Total



Unlinked Passenger Trips per Vehicle Revenue Mile: Agency Total



Notes:

^aDemand Response - Taxi (DT) and non-dedicated fleets do not report fleet age data.