

# Shoshone-Bannock Tribes

2018 Annual Agency Profile

## General Information

**Federally Recognized Tribal Statistical Areas**  
Fort Hall Reservation and Off-Reservation Trust Land, ID

**Service Consumption**  
27,091 Annual Unlinked Trips (UPT)

**Service Supplied**  
145,845 Annual Vehicle Revenue Miles (VRM)  
12,320 Annual Vehicle Revenue Hours (VRH)

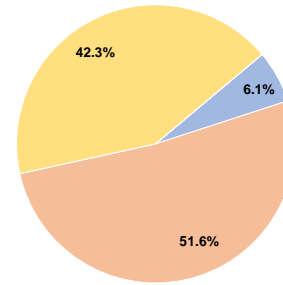
**Database Information**  
NTDID: 00031  
Reporter Type: Tribal Reporter

## Financial Information

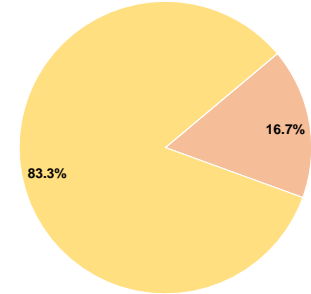
Sources of Operating Funds Expended			
Fare Revenues	\$19,991	6.1%	
Local Funds	\$168,892	51.6%	
State Funds	\$0	0.0%	
Federal Assistance	\$138,627	42.3%	
Other Funds	\$0	0.0%	
<b>Total Operating Funds Expended</b>	<b>\$327,510</b>	<b>100.0%</b>	

Sources of Capital Funds Expended			
Fare Revenues	\$0	0.0%	
Local Funds	\$14,860	16.7%	
State Funds	\$0	0.0%	
Federal Assistance	\$74,300	83.3%	
Other Funds	\$0	0.0%	
<b>Total Capital Funds Expended</b>	<b>\$89,160</b>	<b>100.0%</b>	

### Operating Funding Sources



### Capital Funding Sources



## Modal Characteristics

### Operation Characteristics

#### Vehicles Operated at Maximum Service

Mode	Directly Operated	Purchased Transportation	Operating Expenses	Fare Revenues	Uses of Capital Funds	Annual Unlinked Trips	Annual Vehicle Revenue Miles	Annual Vehicle Revenue Hours	Average Fleet Age in Years <sup>a</sup>
Bus	12	-	\$327,510	\$19,991	\$89,160	27,091	145,845	12,320	16.3
<b>Total</b>	<b>12</b>	<b>-</b>	<b>\$327,510</b>	<b>\$19,991</b>	<b>\$89,160</b>	<b>27,091</b>	<b>145,845</b>	<b>12,320</b>	

### Performance Measures

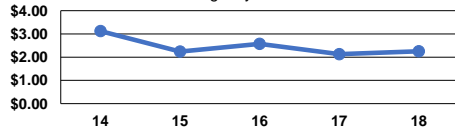
#### Service Efficiency

Mode	Operating Expenses per Vehicle Revenue Mile	Operating Expenses per Vehicle Revenue Hour
Bus	\$2.25	\$26.58
<b>Total</b>	<b>\$2.25</b>	<b>\$26.58</b>

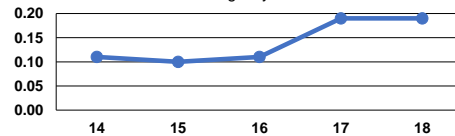
#### Service Effectiveness

Mode	Operating Expenses per Unlinked Passenger Trip	Unlinked Trips per Vehicle Revenue Mile	Unlinked Trips per Vehicle Revenue Hour
Bus	\$12.09	0.2	2.2
<b>Total</b>	<b>\$12.09</b>	<b>0.2</b>	<b>2.2</b>

Operating Expense per Vehicle Revenue Mile: Agency Total



Unlinked Passenger Trips per Vehicle Revenue Mile: Agency Total



**Notes:**

<sup>a</sup>Demand Response - Taxi (DT) and non-dedicated fleets do not report fleet age data.