

Valley Transit

2018 Annual Agency Profile

General Information

Urbanized Area (UZA) Statistics - 2010 Census

Walla Walla, WA-OR
 28 **Square Miles**
 55,805 **Population**
 464 **Pop. Rank out of 498 UZAs**

Service Area Statistics

25 **Square Miles**
 48,260 **Population**

Service Consumption

728,434 **Annual Unlinked Trips (UPT)**

Service Supplied

549,212 **Annual Vehicle Revenue Miles (VRM)**
 43,179 **Annual Vehicle Revenue Hours (VRH)**

Database Information

NTDID: 00064

Reporter Type: Reduced Reporter

Financial Information

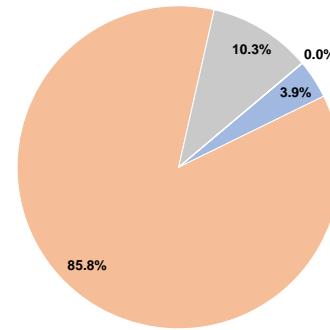
Sources of Operating Funds Expended

Fare Revenues	\$204,656	3.9%
Local Funds	\$4,544,971	85.8%
State Funds	\$546,035	10.3%
Federal Assistance	\$0	0.0%
Other Funds	\$2,500	0.0%
Total Operating Funds Expended	\$5,298,162	100.0%

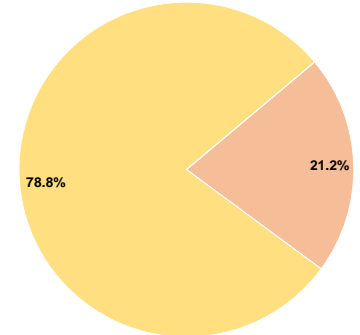
Sources of Capital Funds Expended

Fare Revenues	\$0	0.0%
Local Funds	\$268,480	21.2%
State Funds	\$0	0.0%
Federal Assistance	\$996,643	78.8%
Other Funds	\$0	0.0%
Total Capital Funds Expended	\$1,265,123	100.0%

Operating Funding Sources



Capital Funding Sources



Modal Characteristics

Operation Characteristics

Vehicles Operated at Maximum Service

Mode	Directly Operated	Purchased Transportation	Operating Expenses	Fare Revenues	Uses of Capital Funds	Annual Unlinked Trips	Annual Vehicle Revenue Miles	Annual Vehicle Revenue Hours	Average Fleet Age in Years ^a
Demand Response	8	-	\$1,577,646	\$24,898	\$1,090,116	44,100	141,394	13,584	2.5
Bus	11	-	\$3,572,650	\$149,279	\$175,007	676,789	344,498	28,118	11.9
Vanpool	3	-	\$147,866	\$30,479	\$0	7,545	63,320	1,477	10.0
Total	22	-	\$5,298,162	\$204,656	\$1,265,123	728,434	549,212	43,179	

Performance Measures

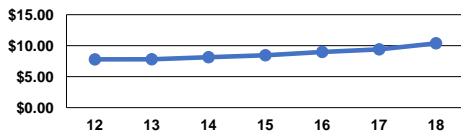
Service Efficiency

Mode	Operating Expenses per Vehicle Revenue Mile	Operating Expenses per Vehicle Revenue Hour
Demand Response	\$11.16	\$116.14
Bus	\$10.37	\$127.06
Vanpool	\$2.34	\$100.11
Total	\$9.65	\$122.70

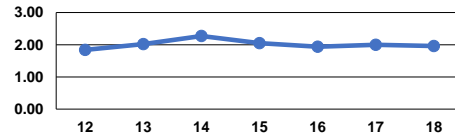
Service Effectiveness

Mode	Operating Expenses per Unlinked Passenger Trip	Unlinked Trips per Vehicle Revenue Mile	Unlinked Trips per Vehicle Revenue Hour
Demand Response	\$35.77	0.3	3.2
Bus	\$5.28	2.0	24.1
Vanpool	\$19.60	0.1	5.1
Total	\$7.27	1.3	16.9

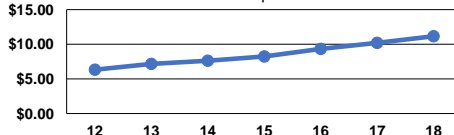
Operating Expense per Vehicle Revenue Mile: Bus



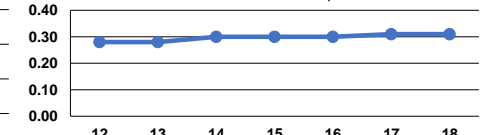
Unlinked Passenger Trips per Vehicle Revenue Mile: Bus



Operating Expense per Vehicle Revenue Mile: Demand Response



Unlinked Passenger Trips per Vehicle Revenue Mile: Demand Response



Notes:

^aDemand Response - Taxi (DT) and non-dedicated fleets do not report fleet age data.