

# Squaxin Island Tribe

## 2018 Annual Agency Profile

### General Information

#### Federally Recognized Tribal Statistical Areas

Squaxin Island Reservation and Off-Reservation Trust Land, WA

#### Service Consumption

19,629 Annual Unlinked Trips (UPT)

#### Service Supplied

44,726 Annual Vehicle Revenue Miles (VRM)

2,693 Annual Vehicle Revenue Hours (VRH)

#### Database Information

NTDID: 00103

Reporter Type: Tribal Reporter

### Financial Information

#### Sources of Operating Funds Expended

|                    |           |       |
|--------------------|-----------|-------|
| Fare Revenues      | \$0       | 0.0%  |
| Local Funds        | \$97,761  | 44.7% |
| State Funds        | \$0       | 0.0%  |
| Federal Assistance | \$121,068 | 55.3% |
| Other Funds        | \$0       | 0.0%  |

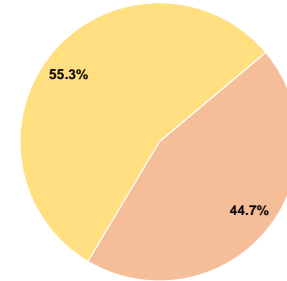
**Total Operating Funds Expended \$218,829 100.0%**

#### Sources of Capital Funds Expended

|                    |     |
|--------------------|-----|
| Fare Revenues      | \$0 |
| Local Funds        | \$0 |
| State Funds        | \$0 |
| Federal Assistance | \$0 |
| Other Funds        | \$0 |

**Total Capital Funds Expended \$0**

#### Operating Funding Sources



### Modal Characteristics

#### Operation Characteristics

#### Vehicles Operated at Maximum Service

| Mode         | Directly Operated | Purchased Transportation | Operating Expenses | Fare Revenues | Uses of Capital Funds | Annual Unlinked Trips | Annual Vehicle Revenue Miles | Annual Vehicle Revenue Hours | Average Fleet Age in Years <sup>a</sup> |
|--------------|-------------------|--------------------------|--------------------|---------------|-----------------------|-----------------------|------------------------------|------------------------------|-----------------------------------------|
| Bus          | 3                 | -                        | \$218,829          | \$0           | \$0                   | 19,629                | 44,726                       | 2,693                        | 6.3                                     |
| <b>Total</b> | <b>3</b>          | <b>-</b>                 | <b>\$218,829</b>   | <b>\$0</b>    | <b>\$0</b>            | <b>19,629</b>         | <b>44,726</b>                | <b>2,693</b>                 |                                         |

#### Performance Measures

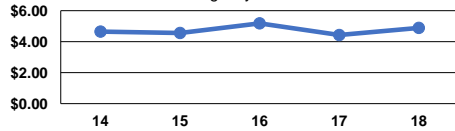
#### Service Efficiency

| Mode         | Operating Expenses per Vehicle Revenue Mile | Operating Expenses per Vehicle Revenue Hour |
|--------------|---------------------------------------------|---------------------------------------------|
| Bus          | \$4.89                                      | \$81.26                                     |
| <b>Total</b> | <b>\$4.89</b>                               | <b>\$81.26</b>                              |

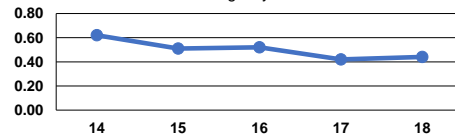
#### Service Effectiveness

| Mode         | Operating Expenses per Unlinked Passenger Trip | Unlinked Trips per Vehicle Revenue Mile | Unlinked Trips per Vehicle Revenue Hour |
|--------------|------------------------------------------------|-----------------------------------------|-----------------------------------------|
| Bus          | \$11.15                                        | 0.4                                     | 7.3                                     |
| <b>Total</b> | <b>\$11.15</b>                                 | <b>0.4</b>                              | <b>7.3</b>                              |

Operating Expense per Vehicle Revenue Mile: Agency Total



Unlinked Passenger Trips per Vehicle Revenue Mile: Agency Total



**Notes:**

<sup>a</sup>Demand Response - Taxi (DT) and non-dedicated fleets do not report fleet age data.