

York County Community Action Corporation

2018 Annual Agency Profile

General Information

Urbanized Area (UZA) Statistics - 2010 Census

Portsmouth, NH-ME
 93 **Square Miles**
 88,200 **Population**
 329 **Pop. Rank out of 498 UZAs**

Other UZAs Served

0 Maine Non-UZA, 177 Portland, ME, 331 Dover-Rochester, NH-ME

Service Area Statistics

651 **Square Miles**
 202,343 **Population**

Service Consumption

132,751 **Annual Unlinked Trips (UPT)**

Service Supplied

488,875 **Annual Vehicle Revenue Miles (VRM)**
 32,478 **Annual Vehicle Revenue Hours (VRH)**

Database Information

NTDID: 10099
Reporter Type: Reduced Reporter

Financial Information

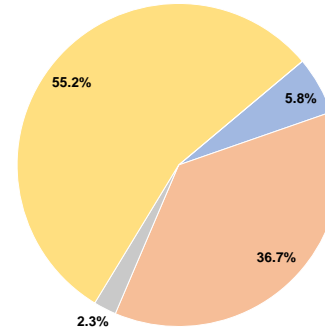
Sources of Operating Funds Expended

Fare Revenues	\$170,607	5.8%
Local Funds	\$1,082,479	36.7%
State Funds	\$67,259	2.3%
Federal Assistance	\$1,626,622	55.2%
Other Funds	\$0	0.0%
Total Operating Funds Expended	\$2,946,967	100.0%

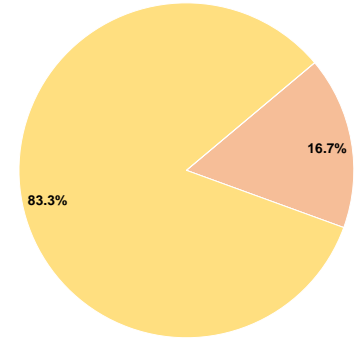
Sources of Capital Funds Expended

Fare Revenues	\$0	0.0%
Local Funds	\$34,137	16.7%
State Funds	\$0	0.0%
Federal Assistance	\$170,683	83.3%
Other Funds	\$0	0.0%
Total Capital Funds Expended	\$204,820	100.0%

Operating Funding Sources



Capital Funding Sources



Modal Characteristics

Operation Characteristics

Vehicles Operated at Maximum Service

Mode	Directly Operated	Purchased Transportation	Operating Expenses	Fare Revenues	Uses of Capital Funds	Annual Unlinked Trips	Annual Vehicle Revenue Miles	Annual Vehicle Revenue Hours	Average Fleet Age in Years ^a
Demand Response	19	-	\$2,946,967	\$170,607	\$204,820	132,751	488,875	32,478	8.6
Total	19	-	\$2,946,967	\$170,607	\$204,820	132,751	488,875	32,478	

Performance Measures

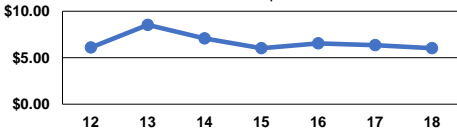
Service Efficiency

Mode	Operating Expenses per Vehicle Revenue Mile	Operating Expenses per Vehicle Revenue Hour
Demand Response	\$6.03	\$90.74
Total	\$6.03	\$90.74

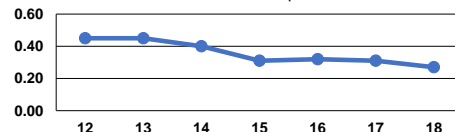
Service Effectiveness

Mode	Operating Expenses per Unlinked Passenger Trip	Unlinked Trips per Vehicle Revenue Mile	Unlinked Trips per Vehicle Revenue Hour
Demand Response	\$22.20	0.3	4.1
Total	\$22.20	0.3	4.1

Operating Expense per Vehicle Revenue Mile: Demand Response



Unlinked Passenger Trips per Vehicle Revenue Mile: Demand Response



Notes:

^aDemand Response - Taxi (DT) and non-dedicated fleets do not report fleet age data.