

**General Information**

**Urbanized Area (UZA) Statistics - 2010 Census**

New York-Newark, NY-NJ-CT  
3,450 **Square Miles**  
18,351,295 **Population**  
1 **Pop. Rank out of 498 UZAs**

**Service Area Statistics**

89 **Square Miles**  
324,278 **Population**

**Service Consumption**

484,952 **Annual Unlinked Trips (UPT)**

**Service Supplied**

821,067 **Annual Vehicle Revenue Miles (VRM)**  
26,054 **Annual Vehicle Revenue Hours (VRH)**

**Database Information**

NTDID: 20160

Reporter Type: Reduced Reporter

**Financial Information**

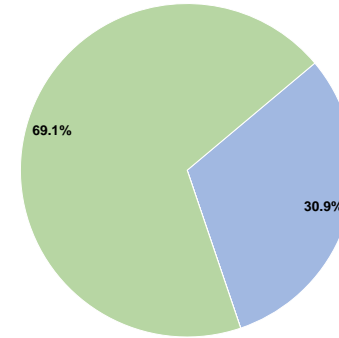
**Sources of Operating Funds Expended**

Fare Revenues	\$4,640,314	30.9%
Local Funds	\$0	0.0%
State Funds	\$0	0.0%
Federal Assistance	\$0	0.0%
Other Funds	\$10,370,701	69.1%
<b>Total Operating Funds Expended</b>	<b>\$15,011,015</b>	<b>100.0%</b>

**Sources of Capital Funds Expended**

Fare Revenues	\$0
Local Funds	\$0
State Funds	\$0
Federal Assistance	\$0
Other Funds	\$0
<b>Total Capital Funds Expended</b>	<b>\$0</b>

**Operating Funding Sources**



**Modal Characteristics**

**Operation Characteristics**

**Vehicles Operated at Maximum Service**

Mode	Directly Operated	Purchased Transportation	Operating Expenses	Fare Revenues	Uses of Capital Funds	Annual Unlinked Trips	Annual Vehicle Revenue Miles	Annual Vehicle Revenue Hours	Average Fleet Age in Years <sup>a</sup>
Commuter Bus	23	-	\$4,640,314	\$4,640,314	\$0	484,952	821,067	26,054	3.3
<b>Total</b>	<b>23</b>	<b>-</b>	<b>\$4,640,314</b>	<b>\$4,640,314</b>	<b>\$0</b>	<b>484,952</b>	<b>821,067</b>	<b>26,054</b>	

**Performance Measures**

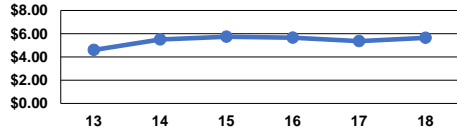
**Service Efficiency**

Mode	Operating Expenses per Vehicle Revenue Mile	Operating Expenses per Vehicle Revenue Hour
Commuter Bus	\$5.65	\$178.10
<b>Total</b>	<b>\$5.65</b>	<b>\$178.10</b>

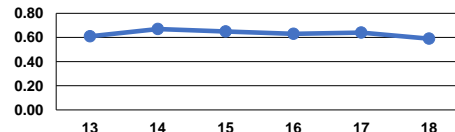
**Service Effectiveness**

Mode	Operating Expenses per Unlinked Passenger Trip	Unlinked Trips per Vehicle Revenue Mile	Unlinked Trips per Vehicle Revenue Hour
Commuter Bus	\$9.57	0.6	18.6
<b>Total</b>	<b>\$9.57</b>	<b>0.6</b>	<b>18.6</b>

Operating Expense per Vehicle Revenue Mile: Commuter Bus



Unlinked Passenger Trips per Vehicle Revenue Mile: Commuter Bus



**Notes:**

<sup>a</sup>Demand Response - Taxi (DT) and non-dedicated fleets do not report fleet age data.