

Harford County Maryland dba Harford Transit LINK

2018 Annual Agency Profile

General Information

Urbanized Area (UZA) Statistics - 2010 Census

Aberdeen-Bel Air South-Bel Air North, MD

131 **Square Miles**

213,751 **Population**

169 **Pop. Rank out of 498 UZAs**

Other UZAs Served

0 Maryland Non-UZA

Service Area Statistics

133 **Square Miles**

250,290 **Population**

Service Consumption

336,052 **Annual Unlinked Trips (UPT)**

Service Supplied

849,492 **Annual Vehicle Revenue Miles (VRM)**

49,253 **Annual Vehicle Revenue Hours (VRH)**

Database Information

NTDID: 30074

Reporter Type: Reduced Reporter

Financial Information

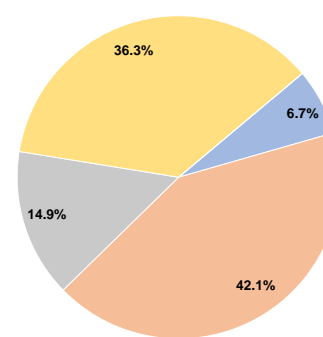
Sources of Operating Funds Expended

Fare Revenues	\$291,217	6.7%
Local Funds	\$1,839,942	42.1%
State Funds	\$649,211	14.9%
Federal Assistance	\$1,586,781	36.3%
Other Funds	\$0	0.0%
Total Operating Funds Expended	\$4,367,151	100.0%

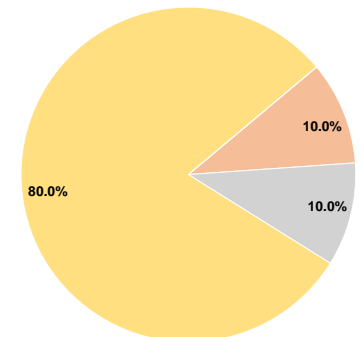
Sources of Capital Funds Expended

Fare Revenues	\$0	0.0%
Local Funds	\$29,700	10.0%
State Funds	\$29,700	10.0%
Federal Assistance	\$237,598	80.0%
Other Funds	\$0	0.0%
Total Capital Funds Expended	\$296,998	100.0%

Operating Funding Sources



Capital Funding Sources



Modal Characteristics

Operation Characteristics

Vehicles Operated at Maximum Service

Mode	Directly Operated	Purchased Transportation	Operating Expenses	Fare Revenues	Uses of Capital Funds	Annual Unlinked Trips	Annual Vehicle Revenue Miles	Annual Vehicle Revenue Hours	Average Fleet Age in Years ^a
Demand Response	14	-	\$1,173,077	\$83,245	\$296,998	46,506	310,690	19,806	7.5
Bus	12	-	\$3,194,074	\$207,972	\$0	289,546	538,802	29,447	7.4
Total	26	-	\$4,367,151	\$291,217	\$296,998	336,052	849,492	49,253	

Performance Measures

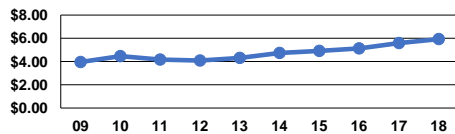
Service Efficiency

Mode	Operating Expenses per Vehicle Revenue Mile	Operating Expenses per Vehicle Revenue Hour
Demand Response	\$3.78	\$59.23
Bus	\$5.93	\$108.47
Total	\$5.14	\$88.67

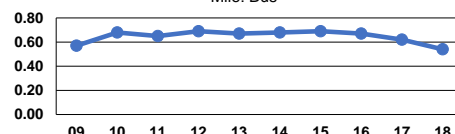
Service Effectiveness

Mode	Operating Expenses per Unlinked Passenger Trip	Unlinked Trips per Vehicle Revenue Mile	Unlinked Trips per Vehicle Revenue Hour
Demand Response	\$25.22	0.1	2.3
Bus	\$11.03	0.5	9.8
Total	\$13.00	0.4	6.8

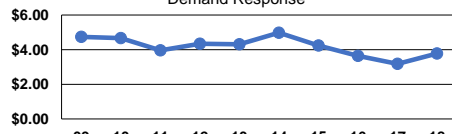
Operating Expense per Vehicle Revenue Mile: Bus



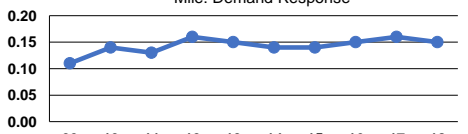
Unlinked Passenger Trips per Vehicle Revenue Mile: Bus



Operating Expense per Vehicle Revenue Mile: Demand Response



Unlinked Passenger Trips per Vehicle Revenue Mile: Demand Response



Notes:

^aDemand Response - Taxi (DT) and non-dedicated fleets do not report fleet age data.