

# City of Harrisonburg Department of Public Transportation

2018 Annual Agency Profile

## General Information

### Urbanized Area Statistics - 2010 Census

Harrisonburg, VA  
 33 Square Miles  
 66,784 Population  
 413 Pop. Rank out of 498 UZAs

### Service Consumption

4,528,415 Annual Passenger Miles (PMT)  
 2,116,785 Annual Unlinked Trips (UPT)  
 7,823 Average Weekday Unlinked Trips  
 2,091 Average Saturday Unlinked Trips  
 610 Average Sunday Unlinked Trips

### Database Information

NTDID: 30094  
 Reporter Type: Full Reporter

### Service Area Statistics

17 Square Miles  
 55,160 Population

### Service Supplied

760,696 Annual Vehicle Revenue Miles (VRM)  
 77,394 Annual Vehicle Revenue Hours (VRH)  
 40 Vehicles Operated in Maximum Service (VOMS)  
 51 Vehicles Available for Maximum Service (VAMS)

## Modal Characteristics

Modal Overview	Vehicles Operated in Maximum Service		Uses of Capital Funds					Total
	Directly Operated	Purchased Transportation	Revenue Vehicles	Systems and Guideways	Facilities and Stations	Other		
	Demand Response	8	-	\$58,149	\$0	\$0	\$0	
Bus	32	-	\$0	\$25,340	\$0	\$0	\$25,340	
<b>Total</b>	<b>40</b>	<b>-</b>	<b>\$58,149</b>	<b>\$25,340</b>	<b>\$0</b>	<b>\$0</b>	<b>\$83,489</b>	

### Operation Characteristics

Mode	Operating Expenses	Fare Revenues	Uses of Capital Funds	Annual Passenger Miles	Annual Unlinked Trips	Annual Vehicle Revenue Miles	Annual Vehicle Revenue Hours	Fixed Guideway Directional Route Miles	Vehicles Available for Maximum Service	Vehicles Operated in Maximum Service	Percent Spare Vehicles	Average Fleet Age in Years <sup>a</sup>
Demand Response	\$685,157	\$140,408	\$58,149	109,076	32,708	142,410	13,697	0.0	12	8	33.3%	3.8
Bus	\$4,097,341	\$1,819,779	\$25,340	4,419,339	2,084,077	618,286	63,697	0.0	39	32	18.0%	6.2
<b>Total</b>	<b>\$4,782,498</b>	<b>\$1,960,187</b>	<b>\$83,489</b>	<b>4,528,415</b>	<b>2,116,785</b>	<b>760,696</b>	<b>77,394</b>	<b>0.0</b>	<b>51</b>	<b>40</b>	<b>21.6%</b>	

### Performance Measures

Mode	Service Efficiency		Service Effectiveness				
	Operating Expenses per Vehicle Revenue Mile	Operating Expenses per Vehicle Revenue Hour	Mode	Operating Expenses per Passenger Mile	Operating Expenses per Unlinked Passenger Trip	Unlinked Trips per Vehicle Revenue Mile	Unlinked Trips per Vehicle Revenue Hour
Demand Response	\$4.81	\$50.02	Demand Response	\$6.28	\$20.95	0.2	2.4
Bus	\$6.63	\$64.33	Bus	\$0.93	\$1.97	3.4	32.7
<b>Total</b>	<b>\$6.29</b>	<b>\$61.79</b>	<b>Total</b>	<b>\$1.06</b>	<b>\$2.26</b>	<b>2.8</b>	<b>27.4</b>



**Notes:**  
<sup>a</sup>Demand Response - Taxi (DT) and non-dedicated fleets do not report fleet age data.

## Financial Information

### Sources of Operating Funds Expended

Fares and Directly Generated \$2,063,334 40.7%  
 Local Funds \$118,346 2.3%  
 State Funds \$1,338,451 26.4%  
 Federal Assistance \$1,543,877 30.5%

**Total Operating Funds Expended \$5,064,008 100.0%**

### Sources of Capital Funds Expended

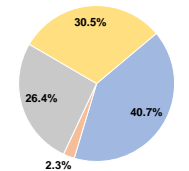
Fares and Directly Generated \$0 0.0%  
 Local Funds \$4,338 5.2%  
 State Funds \$12,370 14.8%  
 Federal Assistance \$66,781 80.0%

**Total Capital Funds Expended \$83,489 100.0%**

### Summary of Operating Expenses (OE)

Labor \$3,450,250 72.1%  
 Materials and Supplies \$974,434 20.4%  
 Purchased Transportation \$0 0.0%  
 Other Operating Expenses \$357,814 7.5%  
**Total Operating Expenses \$4,782,498 100.0%**  
 Reconciling OE Cash Expenditures \$281,510  
 Purchased Transportation (Reported Separately) \$0

### Operating Funding Sources



### Capital Funding Sources

