

Board of County Commissioners of Calvert County, Maryland

2018 Annual Agency Profile

General Information

Urbanized Area (UZA) Statistics - 2010 Census

Lexington Park-California-Chesapeake Ranch Estates, MD

50 **Square Miles**
58,875 **Population**
451 **Pop. Rank out of 498 UZAs**

Other UZAs Served

0 Maryland Non-UZA

Service Area Statistics

345 **Square Miles**
90,484 **Population**

Service Consumption

112,648 **Annual Unlinked Trips (UPT)**

Service Supplied

539,689 **Annual Vehicle Revenue Miles (VRM)**
27,866 **Annual Vehicle Revenue Hours (VRH)**

Database Information

NTDID: 30131

Reporter Type: Reduced Reporter

Financial Information

Sources of Operating Funds Expended

Fare Revenues	\$124,417	8.2%
Local Funds	\$681,017	45.0%
State Funds	\$239,821	15.8%
Federal Assistance	\$468,442	30.9%
Other Funds	\$0	0.0%

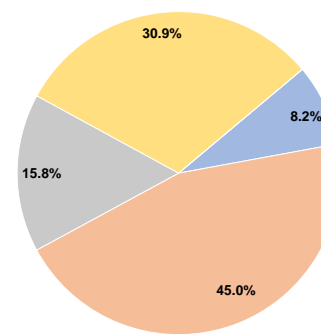
Total Operating Funds Expended \$1,513,697

Sources of Capital Funds Expended

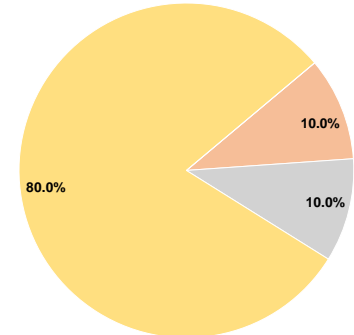
Fare Revenues	\$0	0.0%
Local Funds	\$1,086	10.0%
State Funds	\$1,087	10.0%
Federal Assistance	\$8,692	80.0%
Other Funds	\$0	0.0%

Total Capital Funds Expended \$10,865

Operating Funding Sources



Capital Funding Sources



Modal Characteristics

Operation Characteristics

Vehicles Operated at Maximum Service

Mode	Directly Operated	Purchased Transportation	Operating Expenses	Fare Revenues	Uses of Capital Funds	Annual Unlinked Trips	Annual Vehicle Revenue Miles	Annual Vehicle Revenue Hours	Average Fleet Age in Years ^a
Demand Response	5	-	\$524,010	\$24,464	\$0	13,599	140,887	9,156	3.3
Bus	9	-	\$989,687	\$99,953	\$10,865	99,049	398,802	18,710	4.3
Total	14	-	\$1,513,697	\$124,417	\$10,865	112,648	539,689	27,866	

Performance Measures

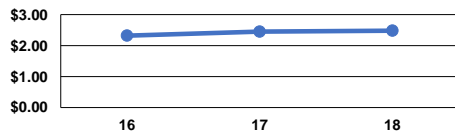
Service Efficiency

Mode	Operating Expenses per Vehicle Revenue Mile	Operating Expenses per Vehicle Revenue Hour
Demand Response	\$3.72	\$57.23
Bus	\$2.48	\$52.90
Total	\$2.80	\$54.32

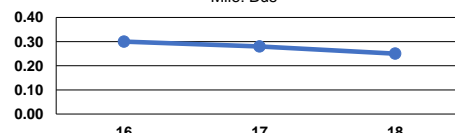
Service Effectiveness

Mode	Operating Expenses per Unlinked Passenger Trip	Unlinked Trips per Vehicle Revenue Mile	Unlinked Trips per Vehicle Revenue Hour
Demand Response	\$38.53	0.1	1.5
Bus	\$9.99	0.2	5.3
Total	\$13.44	0.2	4.0

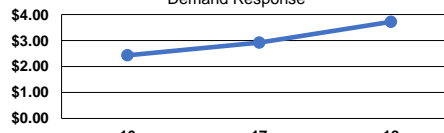
Operating Expense per Vehicle Revenue Mile: Bus



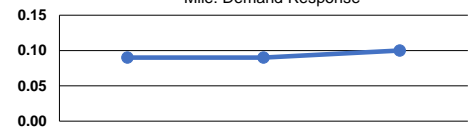
Unlinked Passenger Trips per Vehicle Revenue Mile: Bus



Operating Expense per Vehicle Revenue Mile: Demand Response



Unlinked Passenger Trips per Vehicle Revenue Mile: Demand Response



Notes:

^aDemand Response - Taxi (DT) and non-dedicated fleets do not report fleet age data.