

Central Shenandoah Planning District Commission

2018 Annual Agency Profile

General Information

Urbanized Area (UZA) Statistics - 2010 Census

Staunton-Waynesboro, VA
 38 **Square Miles**
 56,611 **Population**
 461 **Pop. Rank out of 498 UZAs**

Other UZAs Served

0 Virginia Non-UZA

Service Area Statistics

25 **Square Miles**
 50,043 **Population**

Service Consumption

265,469 **Annual Unlinked Trips (UPT)**

Service Supplied

567,463 **Annual Vehicle Revenue Miles (VRM)**
 30,715 **Annual Vehicle Revenue Hours (VRH)**

Database Information

NTDID: 30989

Reporter Type: Reduced Reporter

Financial Information

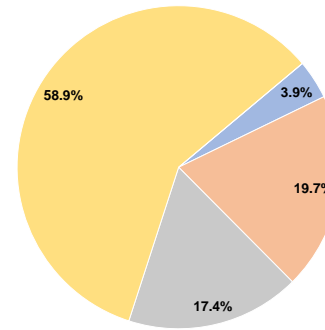
Sources of Operating Funds Expended

Fare Revenues	\$80,282	3.9%
Local Funds	\$404,535	19.7%
State Funds	\$357,326	17.4%
Federal Assistance	\$1,206,771	58.9%
Other Funds	\$0	0.0%
Total Operating Funds Expended	\$2,048,914	100.0%

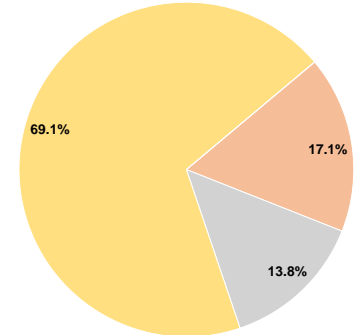
Sources of Capital Funds Expended

Fare Revenues	\$0	0.0%
Local Funds	\$603	17.1%
State Funds	\$487	13.8%
Federal Assistance	\$2,435	69.1%
Other Funds	\$0	0.0%
Total Capital Funds Expended	\$3,525	100.0%

Operating Funding Sources



Capital Funding Sources



Modal Characteristics

Operation Characteristics

Vehicles Operated at Maximum Service

Mode	Directly Operated	Purchased Transportation	Operating Expenses	Fare Revenues	Uses of Capital Funds	Annual Unlinked Trips	Annual Vehicle Revenue Miles	Annual Vehicle Revenue Hours	Average Fleet Age in Years ^a
Demand Response	-	2	\$150,758	\$2,525	\$0	6,233	53,787	3,647	1.0
Bus	-	9	\$1,156,645	\$77,757	\$3,525	259,236	513,676	27,068	1.7
Total	-	11	\$1,307,403	\$80,282	\$3,525	265,469	567,463	30,715	

Performance Measures

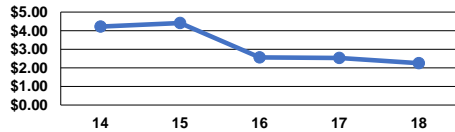
Service Efficiency

Mode	Operating Expenses per Vehicle Revenue Mile	Operating Expenses per Vehicle Revenue Hour
Demand Response	\$2.80	\$41.34
Bus	\$2.25	\$42.73
Total	\$2.30	\$42.57

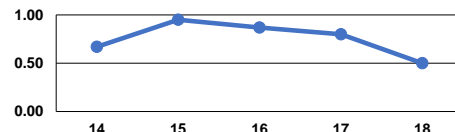
Service Effectiveness

Mode	Operating Expenses per Unlinked Passenger Trip	Unlinked Trips per Vehicle Revenue Mile	Unlinked Trips per Vehicle Revenue Hour
Demand Response	\$24.19	0.1	1.7
Bus	\$4.46	0.5	9.6
Total	\$4.92	0.5	8.6

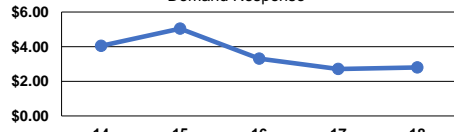
Operating Expense per Vehicle Revenue Mile: Bus



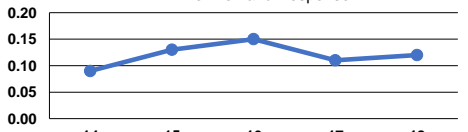
Unlinked Passenger Trips per Vehicle Revenue Mile: Bus



Operating Expense per Vehicle Revenue Mile: Demand Response



Unlinked Passenger Trips per Vehicle Revenue Mile: Demand Response



Notes:

^aDemand Response - Taxi (DT) and non-dedicated fleets do not report fleet age data.