

## General Information

### Urbanized Area (UZA) Statistics - 2010 Census

Greensboro, NC  
185 **Square Miles**  
311,810 **Population**  
120 **Pop. Rank out of 498 UZAs**

### Other UZAs Served

0 North Carolina Non-UZA, 202 High Point, NC

### Service Area Statistics

52 **Square Miles**  
248,111 **Population**

### Service Consumption

49,177 **Annual Unlinked Trips (UPT)**

### Service Supplied

414,550 **Annual Vehicle Revenue Miles (VRM)**  
19,913 **Annual Vehicle Revenue Hours (VRH)**

### Database Information

NTDID: 40133

Reporter Type: Reduced Reporter

## Financial Information

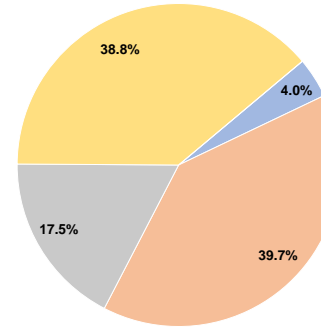
### Sources of Operating Funds Expended

Fare Revenues	\$20,176	4.0%
Local Funds	\$198,982	39.7%
State Funds	\$87,629	17.5%
Federal Assistance	\$194,419	38.8%
Other Funds	\$0	0.0%
<b>Total Operating Funds Expended</b>	<b>\$501,206</b>	<b>100.0%</b>

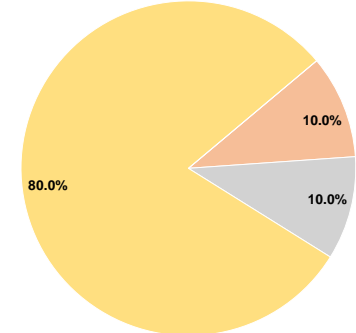
### Sources of Capital Funds Expended

Fare Revenues	\$0	0.0%
Local Funds	\$48,377	10.0%
State Funds	\$48,375	10.0%
Federal Assistance	\$387,007	80.0%
Other Funds	\$0	0.0%
<b>Total Capital Funds Expended</b>	<b>\$483,759</b>	<b>100.0%</b>

### Operating Funding Sources



### Capital Funding Sources



## Modal Characteristics

### Operation Characteristics

#### Vehicles Operated at Maximum Service

Mode	Directly Operated	Purchased Transportation	Operating Expenses	Fare Revenues	Uses of Capital Funds	Annual Unlinked Trips	Annual Vehicle Revenue Miles	Annual Vehicle Revenue Hours	Average Fleet Age in Years <sup>a</sup>
Demand Response	15	-	\$501,206	\$20,176	\$483,759	49,177	414,550	19,913	1.9
<b>Total</b>	<b>15</b>	<b>-</b>	<b>\$501,206</b>	<b>\$20,176</b>	<b>\$483,759</b>	<b>49,177</b>	<b>414,550</b>	<b>19,913</b>	

### Performance Measures

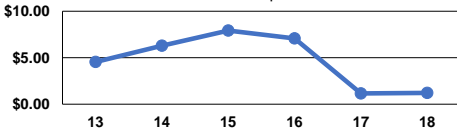
#### Service Efficiency

Mode	Operating Expenses per Vehicle Revenue Mile	Operating Expenses per Vehicle Revenue Hour
Demand Response	\$1.21	\$25.17
<b>Total</b>	<b>\$1.21</b>	<b>\$25.17</b>

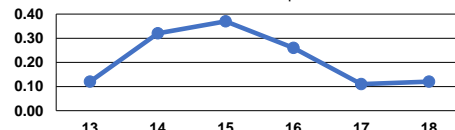
#### Service Effectiveness

Mode	Operating Expenses per Unlinked Passenger Trip	Unlinked Trips per Vehicle Revenue Mile	Unlinked Trips per Vehicle Revenue Hour
Demand Response	\$10.19	0.1	2.5
<b>Total</b>	<b>\$10.19</b>	<b>0.1</b>	<b>2.5</b>

Operating Expense per Vehicle Revenue Mile: Demand Response



Unlinked Passenger Trips per Vehicle Revenue Mile: Demand Response



### Notes:

<sup>a</sup>Demand Response - Taxi (DT) and non-dedicated fleets do not report fleet age data.