

City of Franklin dba Franklin Transit Authority

2018 Annual Agency Profile

General Information

Urbanized Area (UZA) Statistics - 2010 Census

Nashville-Davidson, TN
563 **Square Miles**
969,587 **Population**
44 **Pop. Rank out of 498 UZAs**

Service Area Statistics

22 **Square Miles**
71,374 **Population**

Service Consumption

77,620 **Annual Unlinked Trips (UPT)**

Service Supplied

354,540 **Annual Vehicle Revenue Miles (VRM)**
28,636 **Annual Vehicle Revenue Hours (VRH)**

Database Information

NTDID: 40162

Reporter Type: Reduced Reporter

Financial Information

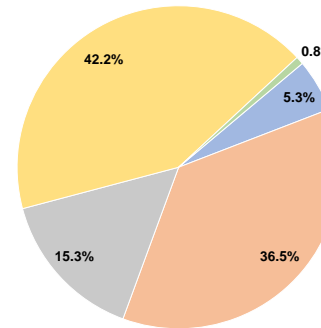
Sources of Operating Funds Expended

Fare Revenues	\$89,723	5.3%
Local Funds	\$622,998	36.5%
State Funds	\$260,864	15.3%
Federal Assistance	\$721,498	42.2%
Other Funds	\$13,422	0.8%
Total Operating Funds Expended	\$1,708,505	100.0%

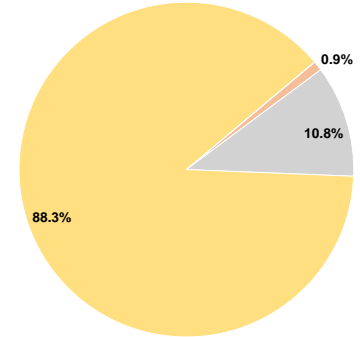
Sources of Capital Funds Expended

Fare Revenues	\$0	0.0%
Local Funds	\$2,570	0.9%
State Funds	\$29,552	10.8%
Federal Assistance	\$241,325	88.3%
Other Funds	\$0	0.0%
Total Capital Funds Expended	\$273,447	100.0%

Operating Funding Sources



Capital Funding Sources



Modal Characteristics

Operation Characteristics

Vehicles Operated at Maximum Service

Mode	Directly Operated	Purchased Transportation	Operating Expenses	Fare Revenues	Uses of Capital Funds	Annual Unlinked Trips	Annual Vehicle Revenue Miles	Annual Vehicle Revenue Hours	Average Fleet Age in Years ^a
Demand Response	-	4	\$723,423	\$46,900	\$247,938	28,280	146,302	12,333	5.2
Bus	-	6	\$954,700	\$42,823	\$25,509	49,340	208,238	16,303	3.9
Total	-	10	\$1,678,123	\$89,723	\$273,447	77,620	354,540	28,636	

Performance Measures

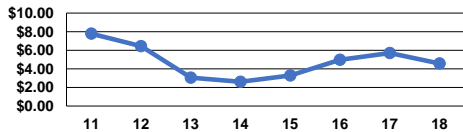
Service Efficiency

Mode	Operating Expenses per Vehicle Revenue Mile	Operating Expenses per Vehicle Revenue Hour
Demand Response	\$4.94	\$58.66
Bus	\$4.58	\$58.56
Total	\$4.73	\$58.60

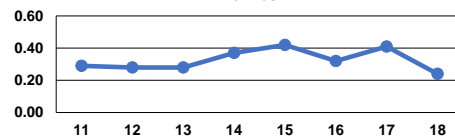
Service Effectiveness

Mode	Operating Expenses per Unlinked Passenger Trip	Unlinked Trips per Vehicle Revenue Mile	Unlinked Trips per Vehicle Revenue Hour
Demand Response	\$25.58	0.2	2.3
Bus	\$19.35	0.2	3.0
Total	\$21.62	0.2	2.7

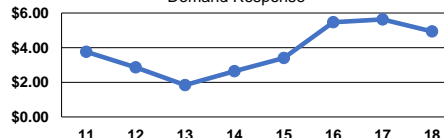
Operating Expense per Vehicle Revenue Mile: Bus



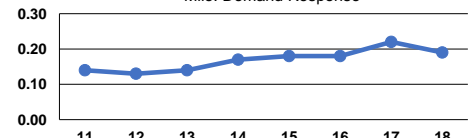
Unlinked Passenger Trips per Vehicle Revenue Mile: Bus



Operating Expense per Vehicle Revenue Mile: Demand Response



Unlinked Passenger Trips per Vehicle Revenue Mile: Demand Response



Notes:

^aDemand Response - Taxi (DT) and non-dedicated fleets do not report fleet age data.