

# Municipality of Yauco

2018 Annual Agency Profile

## General Information

### Urbanized Area (UZA) Statistics - 2010 Census

Yauco, PR  
47 **Square Miles**  
90,899 **Population**  
319 **Pop. Rank out of 498 UZAs**

### Other UZAs Served

0 Puerto Rico Non-UZA

### Service Area Statistics

62 **Square Miles**  
37,679 **Population**

### Service Consumption

103,317 **Annual Unlinked Trips (UPT)**

### Service Supplied

268,187 **Annual Vehicle Revenue Miles (VRM)**  
30,815 **Annual Vehicle Revenue Hours (VRH)**

### Database Information

NTDID: 40174

Reporter Type: Reduced Reporter

## Financial Information

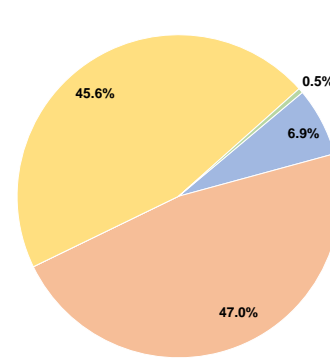
### Sources of Operating Funds Expended

Fare Revenues	\$38,170	6.9%
Local Funds	\$261,303	47.0%
State Funds	\$0	0.0%
Federal Assistance	\$253,203	45.6%
Other Funds	\$2,700	0.5%
<b>Total Operating Funds Expended</b>	<b>\$555,376</b>	<b>100.0%</b>

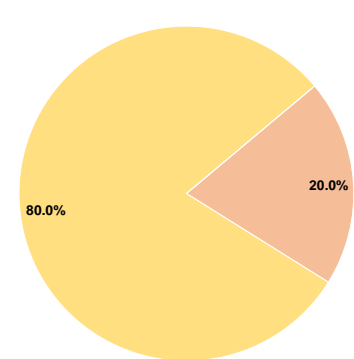
### Sources of Capital Funds Expended

Fare Revenues	\$0	0.0%
Local Funds	\$3,285	20.0%
State Funds	\$0	0.0%
Federal Assistance	\$13,140	80.0%
Other Funds	\$0	0.0%
<b>Total Capital Funds Expended</b>	<b>\$16,425</b>	<b>100.0%</b>

### Operating Funding Sources



### Capital Funding Sources



## Modal Characteristics

### Operation Characteristics

#### Vehicles Operated at Maximum Service

Mode	Directly Operated	Purchased Transportation	Operating Expenses	Fare Revenues	Uses of Capital Funds	Annual Unlinked Trips	Annual Vehicle Revenue Miles	Annual Vehicle Revenue Hours	Average Fleet Age in Years <sup>a</sup>
Demand Response	4	-	\$95,952	\$0	\$0	8,062	48,604	5,085	6.0
Bus	17	-	\$459,424	\$38,170	\$16,425	95,255	219,583	25,730	5.8
<b>Total</b>	<b>21</b>	<b>-</b>	<b>\$555,376</b>	<b>\$38,170</b>	<b>\$16,425</b>	<b>103,317</b>	<b>268,187</b>	<b>30,815</b>	

### Performance Measures

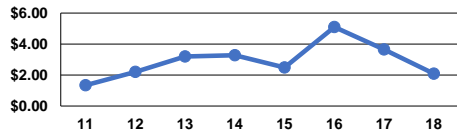
#### Service Efficiency

Mode	Operating Expenses per Vehicle Revenue Mile	Operating Expenses per Vehicle Revenue Hour
Demand Response	\$1.97	\$18.87
Bus	\$2.09	\$17.86
<b>Total</b>	<b>\$2.07</b>	<b>\$18.02</b>

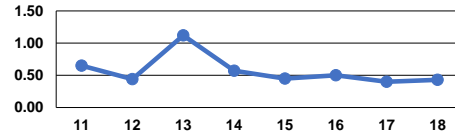
#### Service Effectiveness

Mode	Operating Expenses per Unlinked Passenger Trip	Unlinked Trips per Vehicle Revenue Mile	Unlinked Trips per Vehicle Revenue Hour
Demand Response	\$11.90	0.2	1.6
Bus	\$4.82	0.4	3.7
<b>Total</b>	<b>\$5.38</b>	<b>0.4</b>	<b>3.4</b>

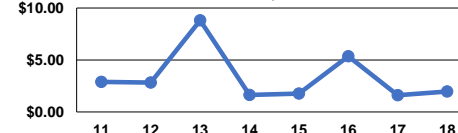
Operating Expense per Vehicle Revenue Mile: Bus



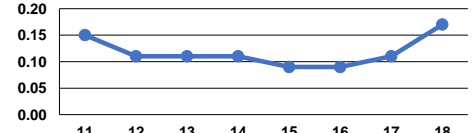
Unlinked Passenger Trips per Vehicle Revenue Mile: Bus



Operating Expense per Vehicle Revenue Mile: Demand Response



Unlinked Passenger Trips per Vehicle Revenue Mile: Demand Response



**Notes:**

<sup>a</sup>Demand Response - Taxi (DT) and non-dedicated fleets do not report fleet age data.