

Virgin Islands Department of Public Works

2018 Annual Agency Profile

General Information

Urbanized Area (UZA) Statistics - 2010 Census

Virgin Islands, VI
 134 **Square Miles**
 106,405 **Population**
 600 **Pop. Rank out of 498 UZAs**

Service Area Statistics

132 **Square Miles**
 89,246 **Population**

Service Consumption

327,899 **Annual Unlinked Trips (UPT)**

Service Supplied

514,277 **Annual Vehicle Revenue Miles (VRM)**
 43,831 **Annual Vehicle Revenue Hours (VRH)**

Database Information

NTDID: 40188

Reporter Type: Reduced Reporter

Financial Information

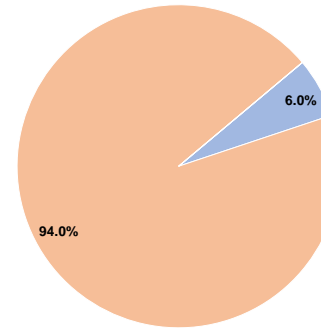
Sources of Operating Funds Expended

Fare Revenues	\$273,208	6.0%
Local Funds	\$4,292,346	94.0%
State Funds	\$0	0.0%
Federal Assistance	\$0	0.0%
Other Funds	\$0	0.0%
Total Operating Funds Expended	\$4,565,554	100.0%

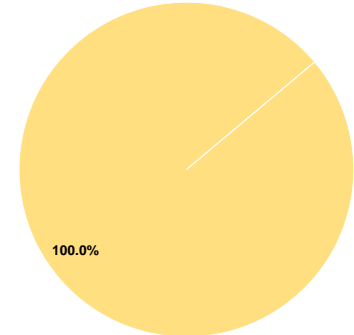
Sources of Capital Funds Expended

Fare Revenues	\$0	0.0%
Local Funds	\$0	0.0%
State Funds	\$0	0.0%
Federal Assistance	\$1,670,773	100.0%
Other Funds	\$0	0.0%
Total Capital Funds Expended	\$1,670,773	100.0%

Operating Funding Sources



Capital Funding Sources



Modal Characteristics

Operation Characteristics

Vehicles Operated at Maximum Service

Mode	Directly Operated	Purchased Transportation	Operating Expenses	Fare Revenues	Uses of Capital Funds	Annual Unlinked Trips	Annual Vehicle Revenue Miles	Annual Vehicle Revenue Hours	Average Fleet Age in Years ^a
Demand Response	20	-	\$1,862,622	\$56,091	\$728,520	39,490	258,318	22,448	2.5
Bus	8	-	\$2,162,347	\$217,117	\$942,253	288,409	255,959	21,383	4.0
Total	28	-	\$4,024,969	\$273,208	\$1,670,773	327,899	514,277	43,831	

Performance Measures

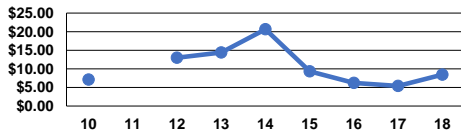
Service Efficiency

Mode	Operating Expenses per Vehicle Revenue Mile	Operating Expenses per Vehicle Revenue Hour
Demand Response	\$7.21	\$82.97
Bus	\$8.45	\$101.12
Total	\$7.83	\$91.83

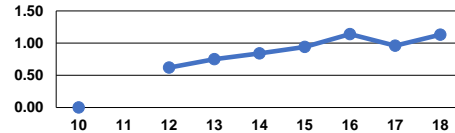
Service Effectiveness

Mode	Operating Expenses per Unlinked Passenger Trip	Unlinked Trips per Vehicle Revenue Mile	Unlinked Trips per Vehicle Revenue Hour
Demand Response	\$47.17	0.2	1.8
Bus	\$7.50	1.1	13.5
Total	\$12.28	0.6	7.5

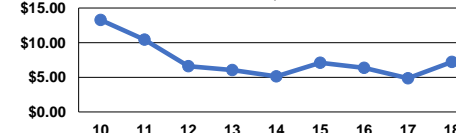
Operating Expense per Vehicle Revenue Mile: Bus



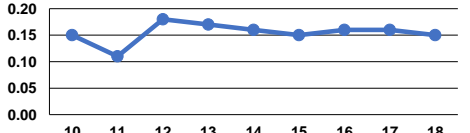
Unlinked Passenger Trips per Vehicle Revenue Mile: Bus



Operating Expense per Vehicle Revenue Mile: Demand Response



Unlinked Passenger Trips per Vehicle Revenue Mile: Demand Response



Notes:

^aDemand Response - Taxi (DT) and non-dedicated fleets do not report fleet age data.