

Mississippi Band of Choctaw Indians

2018 Annual Agency Profile

General Information

Federally Recognized Tribal Statistical Areas

Mississippi Choctaw Reservation and Off-Reservation Trust Land, MS

Service Consumption

74,281 Annual Unlinked Trips (UPT)

Service Supplied

677,510 Annual Vehicle Revenue Miles (VRM)

35,287 Annual Vehicle Revenue Hours (VRH)

Database Information

NTDID: 44925

Reporter Type: Tribal Reporter

Financial Information

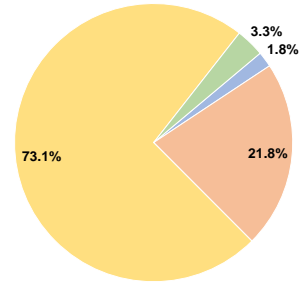
Sources of Operating Funds Expended

Fare Revenues	\$59,944	1.8%
Local Funds	\$726,755	21.8%
State Funds	\$0	0.0%
Federal Assistance	\$2,432,500	73.1%
Other Funds	\$110,438	3.3%
Total Operating Funds Expended	\$3,329,637	100.0%

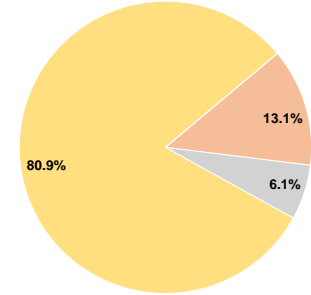
Sources of Capital Funds Expended

Fare Revenues	\$0	0.0%
Local Funds	\$24,758	13.1%
State Funds	\$11,509	6.1%
Federal Assistance	\$153,129	80.9%
Other Funds	\$0	0.0%
Total Capital Funds Expended	\$189,396	100.0%

Operating Funding Sources



Capital Funding Sources



Modal Characteristics

Operation Characteristics

Vehicles Operated at Maximum Service

Mode	Directly Operated	Purchased Transportation	Operating Expenses	Fare Revenues	Uses of Capital Funds	Annual Unlinked Trips	Annual Vehicle Revenue Miles	Annual Vehicle Revenue Hours	Average Fleet Age in Years ^a
Demand Response	30	-	\$3,329,637	\$59,944	\$189,396	74,281	677,510	35,287	5.0
Total	30	-	\$3,329,637	\$59,944	\$189,396	74,281	677,510	35,287	

Performance Measures

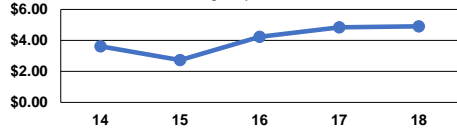
Service Efficiency

Mode	Operating Expenses per Vehicle Revenue Mile	Operating Expenses per Vehicle Revenue Hour
Demand Response	\$4.91	\$94.36
Total	\$4.91	\$94.36

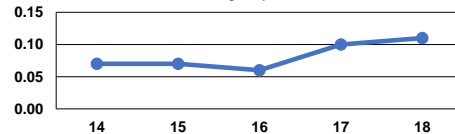
Service Effectiveness

Mode	Operating Expenses per Unlinked Passenger Trip	Unlinked Trips per Vehicle Revenue Mile	Unlinked Trips per Vehicle Revenue Hour
Demand Response	\$44.82	0.1	2.1
Total	\$44.82	0.1	2.1

Operating Expense per Vehicle Revenue Mile: Agency Total



Unlinked Passenger Trips per Vehicle Revenue Mile: Agency Total



Notes:

^aDemand Response - Taxi (DT) and non-dedicated fleets do not report fleet age data.