

# Menominee Indian Tribe of Wisconsin

2018 Annual Agency Profile

## General Information

**Federally Recognized Tribal Statistical Areas**  
Menominee Reservation and Off-Reservation Trust Land, WI

**Service Consumption**  
170,952 Annual Unlinked Trips (UPT)

**Service Supplied**  
1,502,879 Annual Vehicle Revenue Miles (VRM)  
66,639 Annual Vehicle Revenue Hours (VRH)

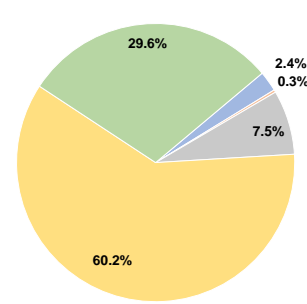
**Database Information**  
NTDID: 55228  
Reporter Type: Tribal Reporter

## Financial Information

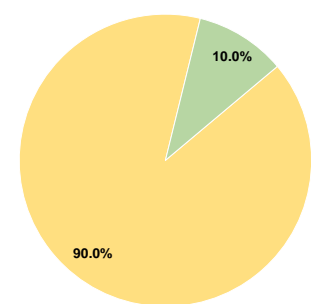
Sources of Operating Funds Expended		
Fare Revenues	\$113,936	2.4%
Local Funds	\$14,194	0.3%
State Funds	\$361,877	7.5%
Federal Assistance	\$2,906,013	60.2%
Other Funds	\$1,430,108	29.6%
<b>Total Operating Funds Expended</b>	<b>\$4,826,128</b>	<b>100.0%</b>

Sources of Capital Funds Expended		
Fare Revenues	\$0	0.0%
Local Funds	\$0	0.0%
State Funds	\$0	0.0%
Federal Assistance	\$300,000	90.0%
Other Funds	\$33,501	10.0%
<b>Total Capital Funds Expended</b>	<b>\$333,501</b>	<b>100.0%</b>

### Operating Funding Sources



### Capital Funding Sources



## Modal Characteristics

### Operation Characteristics

#### Vehicles Operated at Maximum Service

Mode	Directly Operated	Purchased Transportation	Operating Expenses	Fare Revenues	Uses of Capital Funds	Annual Unlinked Trips	Annual Vehicle Revenue Miles	Annual Vehicle Revenue Hours	Average Fleet Age in Years <sup>a</sup>
Demand Response	33	-	\$3,355,696	\$82,034	\$240,121	127,190	1,091,346	47,858	5.0
Bus	8	-	\$1,304,993	\$31,902	\$93,380	43,762	411,533	18,781	7.3
<b>Total</b>	<b>41</b>	<b>-</b>	<b>\$4,660,689</b>	<b>\$113,936</b>	<b>\$333,501</b>	<b>170,952</b>	<b>1,502,879</b>	<b>66,639</b>	

### Performance Measures

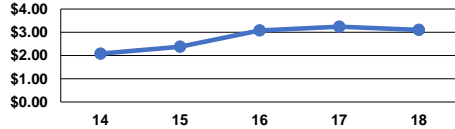
#### Service Efficiency

Mode	Operating Expenses per Vehicle Revenue Mile	Operating Expenses per Vehicle Revenue Hour
Demand Response	\$3.07	\$70.12
Bus	\$3.17	\$69.48
<b>Total</b>	<b>\$3.10</b>	<b>\$69.94</b>

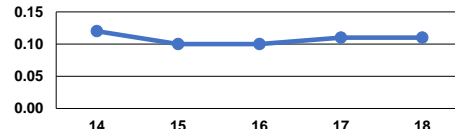
#### Service Effectiveness

Mode	Operating Expenses per Unlinked Passenger Trip	Unlinked Trips per Vehicle Revenue Mile	Unlinked Trips per Vehicle Revenue Hour
Demand Response	\$26.38	0.1	2.7
Bus	\$29.82	0.1	2.3
<b>Total</b>	<b>\$27.26</b>	<b>0.1</b>	<b>2.6</b>

Operating Expense per Vehicle Revenue Mile: Agency Total



Unlinked Passenger Trips per Vehicle Revenue Mile: Agency Total



**Notes:**

<sup>a</sup>Demand Response - Taxi (DT) and non-dedicated fleets do not report fleet age data.