

St. Tammany Parish Government dba STAR Transit

2018 Annual Agency Profile

General Information

Urbanized Area (UZA) Statistics - 2010 Census

Slidell, LA
59 Square Miles
91,151 Population
318 Pop. Rank out of 498 UZAs

Other UZAs Served

327 Mandeville-Covington, LA, 0 Louisiana Non-UZA

Service Area Statistics

127 Square Miles
181,284 Population

Service Consumption

70,998 Annual Unlinked Trips (UPT)

Service Supplied

531,548 Annual Vehicle Revenue Miles (VRM)
34,569 Annual Vehicle Revenue Hours (VRH)

Database Information

NTDID: 60109

Reporter Type: Reduced Reporter

Financial Information

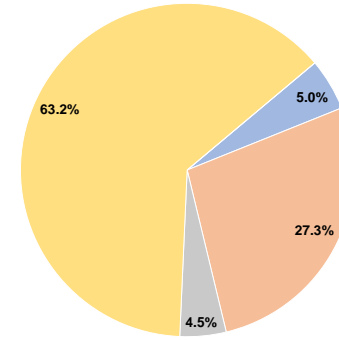
Sources of Operating Funds Expended

Fare Revenues	\$115,362	5.0%
Local Funds	\$625,992	27.3%
State Funds	\$102,689	4.5%
Federal Assistance	\$1,448,253	63.2%
Other Funds	\$0	0.0%
Total Operating Funds Expended	\$2,292,296	100.0%

Sources of Capital Funds Expended

Fare Revenues	\$0
Local Funds	\$0
State Funds	\$0
Federal Assistance	\$0
Other Funds	\$0
Total Capital Funds Expended	\$0

Operating Funding Sources



Modal Characteristics

Operation Characteristics

Vehicles Operated at Maximum Service

Mode	Directly Operated	Purchased Transportation	Operating Expenses	Fare Revenues	Uses of Capital Funds	Annual Unlinked Trips	Annual Vehicle Revenue Miles	Annual Vehicle Revenue Hours	Average Fleet Age in Years ^a
Demand Response	-	29	\$2,232,462	\$115,362	\$0	70,998	531,548	34,569	4.0
Total	-	29	\$2,232,462	\$115,362	\$0	70,998	531,548	34,569	

Performance Measures

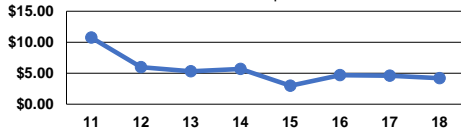
Service Efficiency

Mode	Operating Expenses per Vehicle Revenue Mile	Operating Expenses per Vehicle Revenue Hour
Demand Response	\$4.20	\$64.58
Total	\$4.20	\$64.58

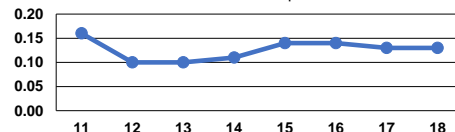
Service Effectiveness

Mode	Operating Expenses per Unlinked Passenger Trip	Unlinked Trips per Vehicle Revenue Mile	Unlinked Trips per Vehicle Revenue Hour
Demand Response	\$31.44	0.1	2.1
Total	\$31.44	0.1	2.1

Operating Expense per Vehicle Revenue Mile: Demand Response



Unlinked Passenger Trips per Vehicle Revenue Mile: Demand Response



Notes:

^aDemand Response - Taxi (DT) and non-dedicated fleets do not report fleet age data.