

General Information

Urbanized Area (UZA) Statistics - 2010 Census

Conroe-The Woodlands, TX
133 **Square Miles**
239,938 **Population**
154 **Pop. Rank out of 498 UZAs**

Service Area Statistics

53 **Square Miles**
56,207 **Population**

Service Consumption

33,357 **Annual Unlinked Trips (UPT)**

Service Supplied

92,642 **Annual Vehicle Revenue Miles (VRM)**
8,931 **Annual Vehicle Revenue Hours (VRH)**

Database Information

NTDID: 60129
Reporter Type: Reduced Reporter

Financial Information

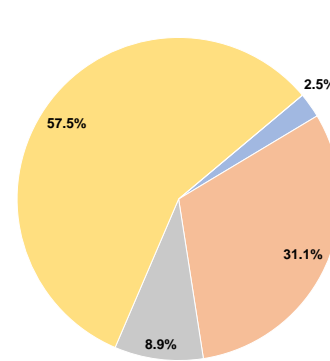
Sources of Operating Funds Expended

Fare Revenues	\$24,495	2.5%
Local Funds	\$304,097	31.1%
State Funds	\$86,780	8.9%
Federal Assistance	\$560,922	57.5%
Other Funds	\$0	0.0%
Total Operating Funds Expended	\$976,294	100.0%

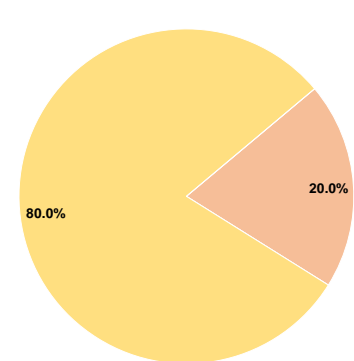
Sources of Capital Funds Expended

Fare Revenues	\$0	0.0%
Local Funds	\$698	20.0%
State Funds	\$0	0.0%
Federal Assistance	\$2,791	80.0%
Other Funds	\$0	0.0%
Total Capital Funds Expended	\$3,489	100.0%

Operating Funding Sources



Capital Funding Sources



Modal Characteristics

Operation Characteristics

Vehicles Operated at Maximum Service

Mode	Directly Operated	Purchased Transportation	Operating Expenses	Fare Revenues	Uses of Capital Funds	Annual Unlinked Trips	Annual Vehicle Revenue Miles	Annual Vehicle Revenue Hours	Average Fleet Age in Years ^a
Demand Response	-	2	\$278,552	\$7,274	\$0	4,006	21,193	2,550	3.0
Bus	-	4	\$697,742	\$17,221	\$3,489	29,351	71,449	6,381	4.0
Total	-	6	\$976,294	\$24,495	\$3,489	33,357	92,642	8,931	

Performance Measures

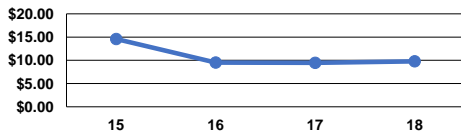
Service Efficiency

Mode	Operating Expenses per Vehicle Revenue Mile	Operating Expenses per Vehicle Revenue Hour
Demand Response	\$13.14	\$109.24
Bus	\$9.77	\$109.35
Total	\$10.54	\$109.32

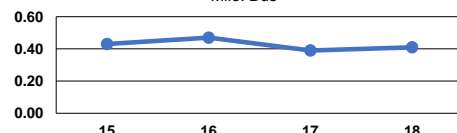
Service Effectiveness

Mode	Operating Expenses per Unlinked Passenger Trip	Unlinked Trips per Vehicle Revenue Mile	Unlinked Trips per Vehicle Revenue Hour
Demand Response	\$69.53	0.2	1.6
Bus	\$23.77	0.4	4.6
Total	\$29.27	0.4	3.7

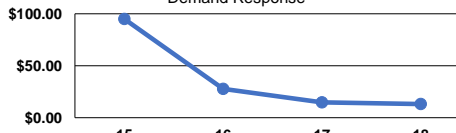
Operating Expense per Vehicle Revenue Mile: Bus



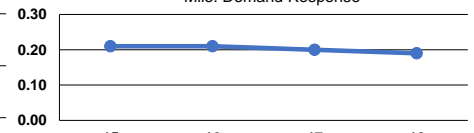
Unlinked Passenger Trips per Vehicle Revenue Mile: Bus



Operating Expense per Vehicle Revenue Mile: Demand Response



Unlinked Passenger Trips per Vehicle Revenue Mile: Demand Response



Notes:

^aDemand Response - Taxi (DT) and non-dedicated fleets do not report fleet age data.