

City of Bettendorf dba Bettendorf Transit System

2018 Annual Agency Profile

General Information

Urbanized Area (UZA) Statistics - 2010 Census

Davenport, IA-IL
138 **Square Miles**
280,051 **Population**
134 **Pop. Rank out of 498 UZAs**

Service Area Statistics

22 **Square Miles**
33,217 **Population**

Service Consumption

84,636 **Annual Unlinked Trips (UPT)**

Service Supplied

255,951 **Annual Vehicle Revenue Miles (VRM)**
14,106 **Annual Vehicle Revenue Hours (VRH)**

Database Information

NTDID: 70007

Reporter Type: Reduced Reporter

Financial Information

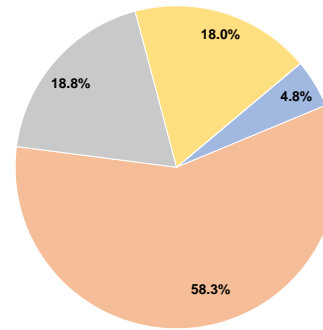
Sources of Operating Funds Expended

Fare Revenues	\$53,653	4.8%
Local Funds	\$646,152	58.3%
State Funds	\$208,521	18.8%
Federal Assistance	\$199,686	18.0%
Other Funds	\$0	0.0%
Total Operating Funds Expended	\$1,108,012	100.0%

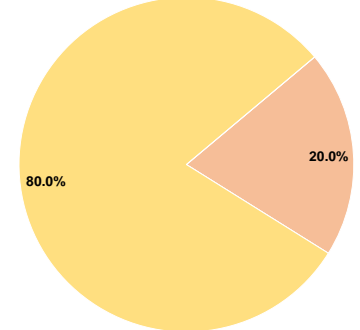
Sources of Capital Funds Expended

Fare Revenues	\$0	0.0%
Local Funds	\$4,650	20.0%
State Funds	\$0	0.0%
Federal Assistance	\$18,600	80.0%
Other Funds	\$0	0.0%
Total Capital Funds Expended	\$23,250	100.0%

Operating Funding Sources



Capital Funding Sources



Modal Characteristics

Operation Characteristics

Vehicles Operated at Maximum Service

Mode	Directly Operated	Purchased Transportation	Operating Expenses	Fare Revenues	Uses of Capital Funds	Annual Unlinked Trips	Annual Vehicle Revenue Miles	Annual Vehicle Revenue Hours	Average Fleet Age in Years ^a
Demand Response	-	1	\$137,319	\$12,044	\$0	7,874	42,173	3,130	0.0
Bus	3	3	\$955,958	\$41,609	\$23,250	76,762	213,778	10,976	2.0
Total	3	4	\$1,093,277	\$53,653	\$23,250	84,636	255,951	14,106	

Performance Measures

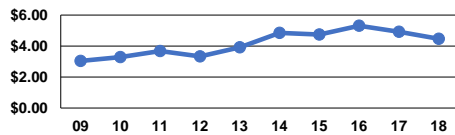
Service Efficiency

Mode	Operating Expenses per Vehicle Revenue Mile	Operating Expenses per Vehicle Revenue Hour
Demand Response	\$3.26	\$43.87
Bus	\$4.47	\$87.10
Total	\$4.27	\$77.50

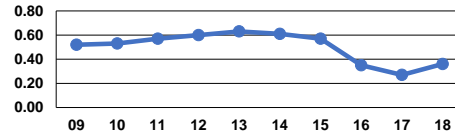
Service Effectiveness

Mode	Operating Expenses per Unlinked Passenger Trip	Unlinked Trips per Vehicle Revenue Mile	Unlinked Trips per Vehicle Revenue Hour
Demand Response	\$17.44	0.2	2.5
Bus	\$12.45	0.4	7.0
Total	\$12.92	0.3	6.0

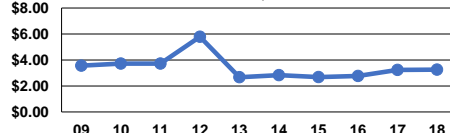
Operating Expense per Vehicle Revenue Mile: Bus



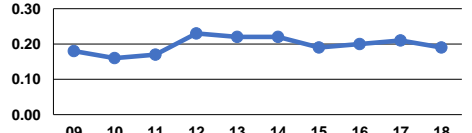
Unlinked Passenger Trips per Vehicle Revenue Mile: Bus



Operating Expense per Vehicle Revenue Mile: Demand Response



Unlinked Passenger Trips per Vehicle Revenue Mile: Demand Response



Notes:

^aDemand Response - Taxi (DT) and non-dedicated fleets do not report fleet age data.