

General Information

Urbanized Area (UZA) Statistics - 2010 Census

Kansas City, MO-KS
678 **Square Miles**
1,519,417 **Population**
31 **Pop. Rank out of 498 UZAs**

Other UZAs Served

0 Kansas Non-UZA

Service Area Statistics

156 **Square Miles**
155,085 **Population**

Service Consumption

192,369 **Annual Unlinked Trips (UPT)**

Service Supplied

647,920 **Annual Vehicle Revenue Miles (VRM)**
39,894 **Annual Vehicle Revenue Hours (VRH)**

Database Information

NTDID: 70047

Reporter Type: Reduced Reporter

Financial Information

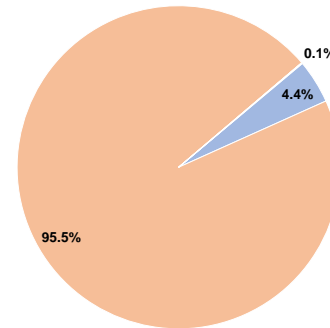
Sources of Operating Funds Expended

Fare Revenues	\$165,948	4.4%
Local Funds	\$3,615,303	95.5%
State Funds	\$0	0.0%
Federal Assistance	\$0	0.0%
Other Funds	\$3,370	0.1%
Total Operating Funds Expended	\$3,784,621	100.0%

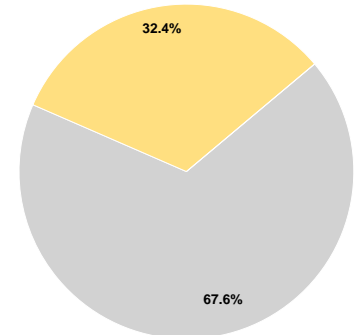
Sources of Capital Funds Expended

Fare Revenues	\$0	0.0%
Local Funds	\$0	0.0%
State Funds	\$841,633	67.6%
Federal Assistance	\$402,566	32.4%
Other Funds	\$0	0.0%
Total Capital Funds Expended	\$1,244,199	100.0%

Operating Funding Sources



Capital Funding Sources



Modal Characteristics

Operation Characteristics

Vehicles Operated at Maximum Service

Mode	Directly Operated	Purchased Transportation	Operating Expenses	Fare Revenues	Uses of Capital Funds	Annual Unlinked Trips	Annual Vehicle Revenue Miles	Annual Vehicle Revenue Hours	Average Fleet Age in Years ^a
Demand Response	11	-	\$1,638,623	\$73,079	\$0	34,935	329,313	20,036	0.7
Bus	8	-	\$2,145,998	\$92,869	\$1,244,199	157,434	318,607	19,858	0.0
Total	19	-	\$3,784,621	\$165,948	\$1,244,199	192,369	647,920	39,894	

Performance Measures

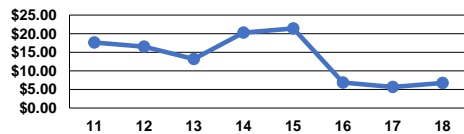
Service Efficiency

Mode	Operating Expenses per Vehicle Revenue Mile	Operating Expenses per Vehicle Revenue Hour
Demand Response	\$4.98	\$81.78
Bus	\$6.74	\$108.07
Total	\$5.84	\$94.87

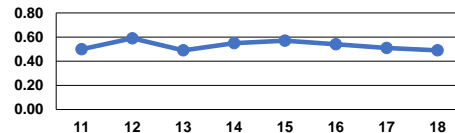
Service Effectiveness

Mode	Operating Expenses per Unlinked Passenger Trip	Unlinked Trips per Vehicle Revenue Mile	Unlinked Trips per Vehicle Revenue Hour
Demand Response	\$46.90	0.1	1.7
Bus	\$13.63	0.5	7.9
Total	\$19.67	0.3	4.8

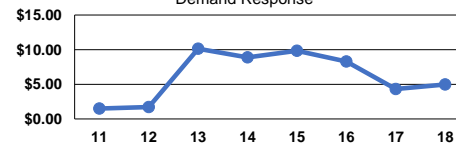
Operating Expense per Vehicle Revenue Mile: Bus



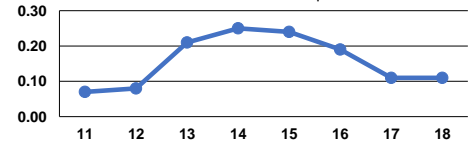
Unlinked Passenger Trips per Vehicle Revenue Mile: Bus



Operating Expense per Vehicle Revenue Mile: Demand Response



Unlinked Passenger Trips per Vehicle Revenue Mile: Demand Response



Notes:

^aDemand Response - Taxi (DT) and non-dedicated fleets do not report fleet age data.