

Flint Hills Area Transportation

2018 Annual Agency Profile

General Information

Urbanized Area (UZA) Statistics - 2010 Census

Manhattan, KS
21 **Square Miles**
54,622 **Population**
469 **Pop. Rank out of 498 UZAs**

Other UZAs Served

0 Kansas Non-UZA

Service Area Statistics

1,835 **Square Miles**
136,821 **Population**

Service Consumption

240,667 **Annual Unlinked Trips (UPT)**

Service Supplied

751,687 **Annual Vehicle Revenue Miles (VRM)**
52,085 **Annual Vehicle Revenue Hours (VRH)**

Database Information

NTDID: 70053

Reporter Type: Reduced Reporter

Financial Information

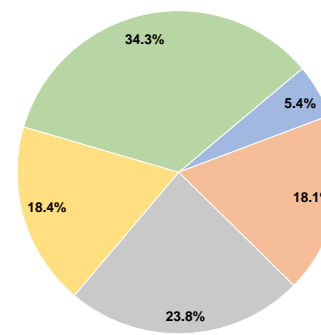
Sources of Operating Funds Expended

Fare Revenues	\$123,787	5.4%
Local Funds	\$416,226	18.1%
State Funds	\$547,888	23.8%
Federal Assistance	\$422,492	18.4%
Other Funds	\$790,256	34.3%
Total Operating Funds Expended	\$2,300,649	100.0%

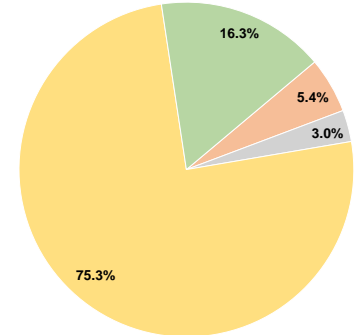
Sources of Capital Funds Expended

Fare Revenues	\$0	0.0%
Local Funds	\$29,119	5.4%
State Funds	\$16,503	3.0%
Federal Assistance	\$407,615	75.3%
Other Funds	\$88,138	16.3%
Total Capital Funds Expended	\$541,375	100.0%

Operating Funding Sources



Capital Funding Sources



Modal Characteristics

Operation Characteristics

Vehicles Operated at Maximum Service

Mode	Directly Operated	Purchased Transportation	Operating Expenses	Fare Revenues	Uses of Capital Funds	Annual Unlinked Trips	Annual Vehicle Revenue Miles	Annual Vehicle Revenue Hours	Average Fleet Age in Years ^a
Demand Response	11	-	\$856,171	\$90,656	\$190,835	43,120	287,979	17,624	6.1
Bus	18	-	\$1,444,478	\$33,131	\$350,540	197,547	463,708	34,461	1.2
Total	29	-	\$2,300,649	\$123,787	\$541,375	240,667	751,687	52,085	

Performance Measures

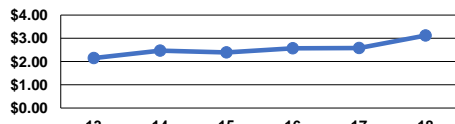
Service Efficiency

Mode	Operating Expenses per Vehicle Revenue Mile	Operating Expenses per Vehicle Revenue Hour
Demand Response	\$2.97	\$48.58
Bus	\$3.12	\$41.92
Total	\$3.06	\$44.17

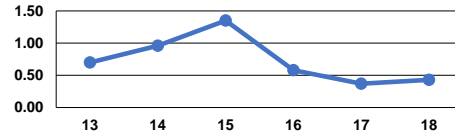
Service Effectiveness

Mode	Operating Expenses per Unlinked Passenger Trip	Unlinked Trips per Vehicle Revenue Mile	Unlinked Trips per Vehicle Revenue Hour
Demand Response	\$19.86	0.1	2.4
Bus	\$7.31	0.4	5.7
Total	\$9.56	0.3	4.6

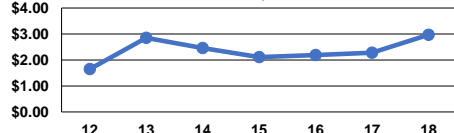
Operating Expense per Vehicle Revenue Mile: Bus



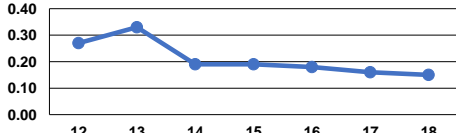
Unlinked Passenger Trips per Vehicle Revenue Mile: Bus



Operating Expense per Vehicle Revenue Mile: Demand Response



Unlinked Passenger Trips per Vehicle Revenue Mile: Demand Response



Notes:

^aDemand Response - Taxi (DT) and non-dedicated fleets do not report fleet age data.