

Ponca Tribe of Nebraska

2018 Annual Agency Profile

General Information

Federally Recognized Tribal Statistical Areas

Ponca (NE) Trust Land, NE--IA

0 Pop. Rank out of 498 UZAs

Other UZAs Served

58 Omaha, NE-IA, 145 Lincoln, NE, 292 Sioux City, IA-NE-SD

Service Consumption

12,089 Annual Unlinked Trips (UPT)

Financial Information

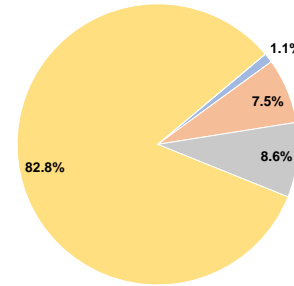
Sources of Operating Funds Expended

| | | |
|---------------------------------------|--------------------|---------------|
| Fare Revenues | \$11,858 | 1.1% |
| Local Funds | \$81,038 | 7.5% |
| State Funds | \$92,896 | 8.6% |
| Federal Assistance | \$893,826 | 82.8% |
| Other Funds | \$0 | 0.0% |
| Total Operating Funds Expended | \$1,079,618 | 100.0% |

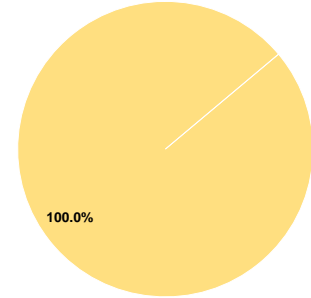
Sources of Capital Funds Expended

| | | |
|-------------------------------------|-----------------|---------------|
| Fare Revenues | \$0 | 0.0% |
| Local Funds | \$0 | 0.0% |
| State Funds | \$0 | 0.0% |
| Federal Assistance | \$32,600 | 100.0% |
| Other Funds | \$0 | 0.0% |
| Total Capital Funds Expended | \$32,600 | 100.0% |

Operating Funding Sources



Capital Funding Sources



Modal Characteristics

Operation Characteristics

Vehicles Operated at Maximum Service

| Mode | Directly Operated | Purchased Transportation | Operating Expenses | Fare Revenues | Uses of Capital Funds | Annual Unlinked Trips | Annual Vehicle Revenue Miles | Annual Vehicle Revenue Hours | Average Fleet Age in Years ^a |
|-----------------|-------------------|--------------------------|--------------------|-----------------|-----------------------|-----------------------|------------------------------|------------------------------|---|
| Demand Response | 17 | - | \$1,079,618 | \$11,858 | \$32,600 | 12,089 | 300,355 | 14,077 | 3.3 |
| Total | 17 | - | \$1,079,618 | \$11,858 | \$32,600 | 12,089 | 300,355 | 14,077 | |

Performance Measures

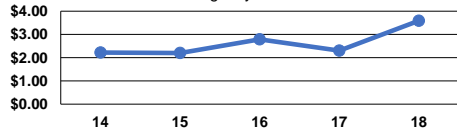
Service Efficiency

| Mode | Operating Expenses per Vehicle Revenue Mile | Operating Expenses per Vehicle Revenue Hour |
|-----------------|---|---|
| Demand Response | \$3.59 | \$76.69 |
| Total | \$3.59 | \$76.69 |

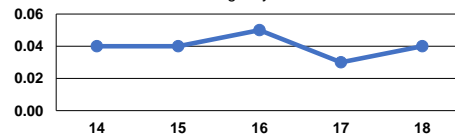
Service Effectiveness

| Mode | Operating Expenses per Unlinked Passenger Trip | Unlinked Trips per Vehicle Revenue Mile | Unlinked Trips per Vehicle Revenue Hour |
|-----------------|--|---|---|
| Demand Response | \$89.31 | 0.0 | 0.9 |
| Total | \$89.31 | 0.0 | 0.9 |

Operating Expense per Vehicle Revenue Mile: Agency Total



Unlinked Passenger Trips per Vehicle Revenue Mile: Agency Total



Notes:

^aDemand Response - Taxi (DT) and non-dedicated fleets do not report fleet age data.