

**General Information**

**Urbanized Area (UZA) Statistics - 2010 Census**

Greeley, CO  
41 **Square Miles**  
117,825 **Population**  
264 **Pop. Rank out of 498 UZAs**

**Service Area Statistics**

33 **Square Miles**  
124,476 **Population**

**Service Consumption**

842,132 **Annual Unlinked Trips (UPT)**

**Service Supplied**

683,786 **Annual Vehicle Revenue Miles (VRM)**  
54,197 **Annual Vehicle Revenue Hours (VRH)**

**Database Information**

NTDID: 80010

Reporter Type: Reduced Reporter

**Financial Information**

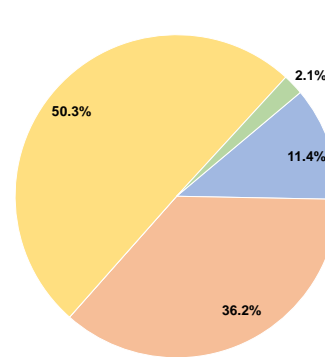
**Sources of Operating Funds Expended**

Fare Revenues	\$493,891	11.4%
Local Funds	\$1,567,718	36.2%
State Funds	\$0	0.0%
Federal Assistance	\$2,175,119	50.3%
Other Funds	\$90,001	2.1%
<b>Total Operating Funds Expended</b>	<b>\$4,326,729</b>	<b>100.0%</b>

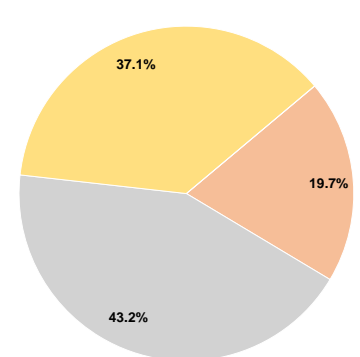
**Sources of Capital Funds Expended**

Fare Revenues	\$0	0.0%
Local Funds	\$483,784	19.7%
State Funds	\$1,060,950	43.2%
Federal Assistance	\$911,562	37.1%
Other Funds	\$0	0.0%
<b>Total Capital Funds Expended</b>	<b>\$2,456,296</b>	<b>100.0%</b>

**Operating Funding Sources**



**Capital Funding Sources**



**Modal Characteristics**

**Operation Characteristics**

**Vehicles Operated at Maximum Service**

Mode	Directly Operated	Purchased Transportation	Operating Expenses	Fare Revenues	Uses of Capital Funds	Annual Unlinked Trips	Annual Vehicle Revenue Miles	Annual Vehicle Revenue Hours	Average Fleet Age in Years <sup>a</sup>
Demand Response	7	-	\$892,313	\$44,517	\$0	23,140	136,859	12,553	4.7
Bus	14	-	\$3,434,416	\$449,374	\$2,456,296	818,992	546,927	41,644	4.5
<b>Total</b>	<b>21</b>	<b>-</b>	<b>\$4,326,729</b>	<b>\$493,891</b>	<b>\$2,456,296</b>	<b>842,132</b>	<b>683,786</b>	<b>54,197</b>	

**Performance Measures**

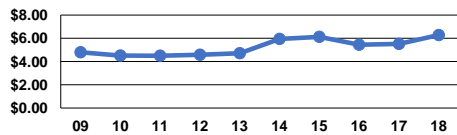
**Service Efficiency**

Mode	Operating Expenses per Vehicle Revenue Mile	Operating Expenses per Vehicle Revenue Hour
Demand Response	\$6.52	\$71.08
Bus	\$6.28	\$82.47
<b>Total</b>	<b>\$6.33</b>	<b>\$79.83</b>

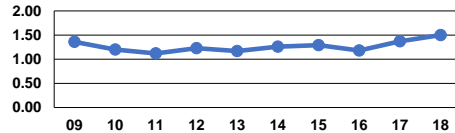
**Service Effectiveness**

Mode	Operating Expenses per Unlinked Passenger Trip	Unlinked Trips per Vehicle Revenue Mile	Unlinked Trips per Vehicle Revenue Hour
Demand Response	\$38.56	0.2	1.8
Bus	\$4.19	1.5	19.7
<b>Total</b>	<b>\$5.14</b>	<b>1.2</b>	<b>15.5</b>

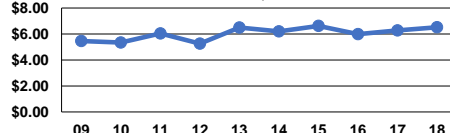
Operating Expense per Vehicle Revenue Mile: Bus



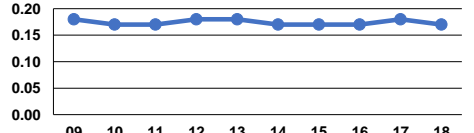
Unlinked Passenger Trips per Vehicle Revenue Mile: Bus



Operating Expense per Vehicle Revenue Mile: Demand Response



Unlinked Passenger Trips per Vehicle Revenue Mile: Demand Response



**Notes:**

<sup>a</sup>Demand Response - Taxi (DT) and non-dedicated fleets do not report fleet age data.