

City of Rapid City dba Rapid Transit System

2018 Annual Agency Profile

General Information

Urbanized Area (UZA) Statistics - 2010 Census

Rapid City, SD
42 **Square Miles**
81,251 **Population**
352 **Pop. Rank out of 498 UZAs**

Service Area Statistics

42 **Square Miles**
67,956 **Population**

Service Consumption

453,453 **Annual Unlinked Trips (UPT)**

Service Supplied

548,463 **Annual Vehicle Revenue Miles (VRM)**
41,777 **Annual Vehicle Revenue Hours (VRH)**

Database Information

NTDID: 80014

Reporter Type: Reduced Reporter

Financial Information

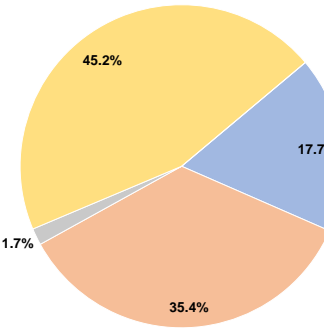
Sources of Operating Funds Expended

Fare Revenues	\$398,538	17.7%
Local Funds	\$799,189	35.4%
State Funds	\$37,838	1.7%
Federal Assistance	\$1,020,762	45.2%
Other Funds	\$0	0.0%
Total Operating Funds Expended	\$2,256,327	100.0%

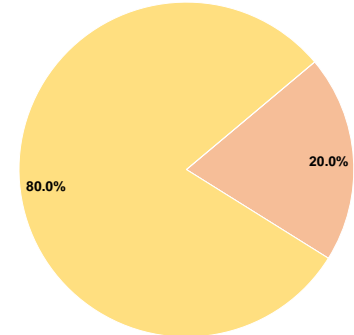
Sources of Capital Funds Expended

Fare Revenues	\$0	0.0%
Local Funds	\$31,854	20.0%
State Funds	\$0	0.0%
Federal Assistance	\$127,418	80.0%
Other Funds	\$0	0.0%
Total Capital Funds Expended	\$159,272	100.0%

Operating Funding Sources



Capital Funding Sources



Modal Characteristics

Operation Characteristics

Vehicles Operated at Maximum Service

Mode	Directly Operated	Purchased Transportation	Operating Expenses	Fare Revenues	Uses of Capital Funds	Annual Unlinked Trips	Annual Vehicle Revenue Miles	Annual Vehicle Revenue Hours	Average Fleet Age in Years ^a
Demand Response	11	-	\$1,045,175	\$188,886	\$159,272	83,756	260,519	20,790	2.9
Bus	9	-	\$1,211,152	\$209,652	\$0	369,697	287,944	20,987	7.7
Total	20	-	\$2,256,327	\$398,538	\$159,272	453,453	548,463	41,777	

Performance Measures

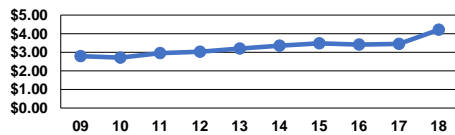
Service Efficiency

Mode	Operating Expenses per Vehicle Revenue Mile	Operating Expenses per Vehicle Revenue Hour
Demand Response	\$4.01	\$50.27
Bus	\$4.21	\$57.71
Total	\$4.11	\$54.01

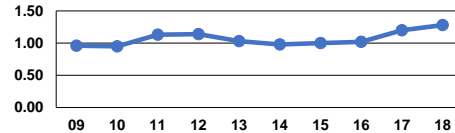
Service Effectiveness

Mode	Operating Expenses per Unlinked Passenger Trip	Unlinked Trips per Vehicle Revenue Mile	Unlinked Trips per Vehicle Revenue Hour
Demand Response	\$12.48	0.3	4.0
Bus	\$3.28	1.3	17.6
Total	\$4.98	0.8	10.9

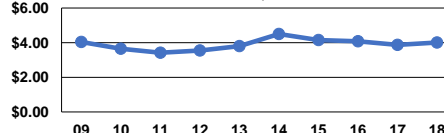
Operating Expense per Vehicle Revenue Mile: Bus



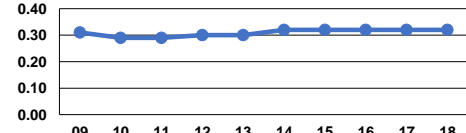
Unlinked Passenger Trips per Vehicle Revenue Mile: Bus



Operating Expense per Vehicle Revenue Mile: Demand Response



Unlinked Passenger Trips per Vehicle Revenue Mile: Demand Response



Notes:

^aDemand Response - Taxi (DT) and non-dedicated fleets do not report fleet age data.