

# Confederated Salish and Kootenai Tribes

## 2018 Annual Agency Profile

### General Information

**Federally Recognized Tribal Statistical Areas**  
Flathead Reservation, MT

#### Service Consumption

47,520 Annual Unlinked Trips (UPT)

#### Service Supplied

646,323 Annual Vehicle Revenue Miles (VRM)  
30,126 Annual Vehicle Revenue Hours (VRH)

#### Database Information

NTDID: 88134  
Reporter Type: Tribal Reporter

### Financial Information

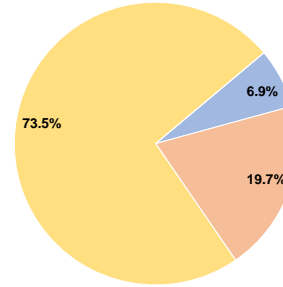
#### Sources of Operating Funds Expended

Fare Revenues	\$82,678	6.9%
Local Funds	\$237,689	19.7%
State Funds	\$0	0.0%
Federal Assistance	\$886,563	73.5%
Other Funds	\$0	0.0%
<b>Total Operating Funds Expended</b>	<b>\$1,206,930</b>	<b>100.0%</b>

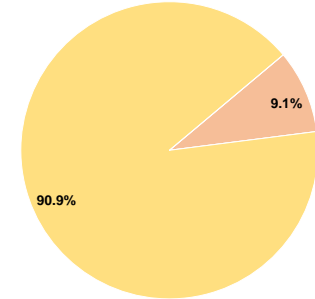
#### Sources of Capital Funds Expended

Fare Revenues	\$0	0.0%
Local Funds	\$21,630	9.1%
State Funds	\$0	0.0%
Federal Assistance	\$216,309	90.9%
Other Funds	\$0	0.0%
<b>Total Capital Funds Expended</b>	<b>\$237,939</b>	<b>100.0%</b>

#### Operating Funding Sources



#### Capital Funding Sources



### Modal Characteristics

#### Operation Characteristics

##### Vehicles Operated at Maximum Service

Mode	Directly Operated	Purchased Transportation	Operating Expenses	Fare Revenues	Uses of Capital Funds	Annual Unlinked Trips	Annual Vehicle Revenue Miles	Annual Vehicle Revenue Hours	Average Fleet Age in Years <sup>a</sup>
Commuter Bus	2	-	\$306,647	\$65,436	\$0	3,640	143,638	3,450	5.5
Demand Response	17	-	\$900,283	\$17,242	\$237,939	43,880	502,685	26,676	6.0
<b>Total</b>	<b>19</b>	<b>-</b>	<b>\$1,206,930</b>	<b>\$82,678</b>	<b>\$237,939</b>	<b>47,520</b>	<b>646,323</b>	<b>30,126</b>	

#### Performance Measures

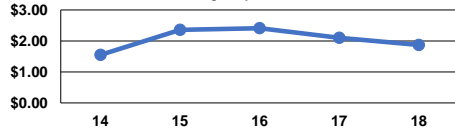
##### Service Efficiency

Mode	Operating Expenses per Vehicle Revenue Mile	Operating Expenses per Vehicle Revenue Hour
Commuter Bus	\$2.13	\$88.88
Demand Response	\$1.79	\$33.75
<b>Total</b>	<b>\$1.87</b>	<b>\$40.06</b>

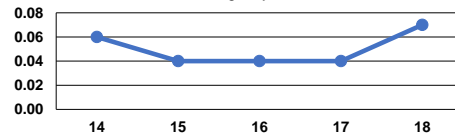
##### Service Effectiveness

Mode	Operating Expenses per Unlinked Passenger Trip	Unlinked Trips per Vehicle Revenue Mile	Unlinked Trips per Vehicle Revenue Hour
Commuter Bus	\$84.24	0.0	1.1
Demand Response	\$20.52	0.1	1.6
<b>Total</b>	<b>\$25.40</b>	<b>0.1</b>	<b>1.6</b>

Operating Expense per Vehicle Revenue Mile: Agency Total



Unlinked Passenger Trips per Vehicle Revenue Mile: Agency Total



**Notes:**

<sup>a</sup>Demand Response - Taxi (DT) and non-dedicated fleets do not report fleet age data.